

NO.	ISSUED FOR	YYMMDD
1	REVIEW	2021-11-02
2	DEVELOPMENT PERMIT	2021-12-23

SEAL

NORTH ARROW

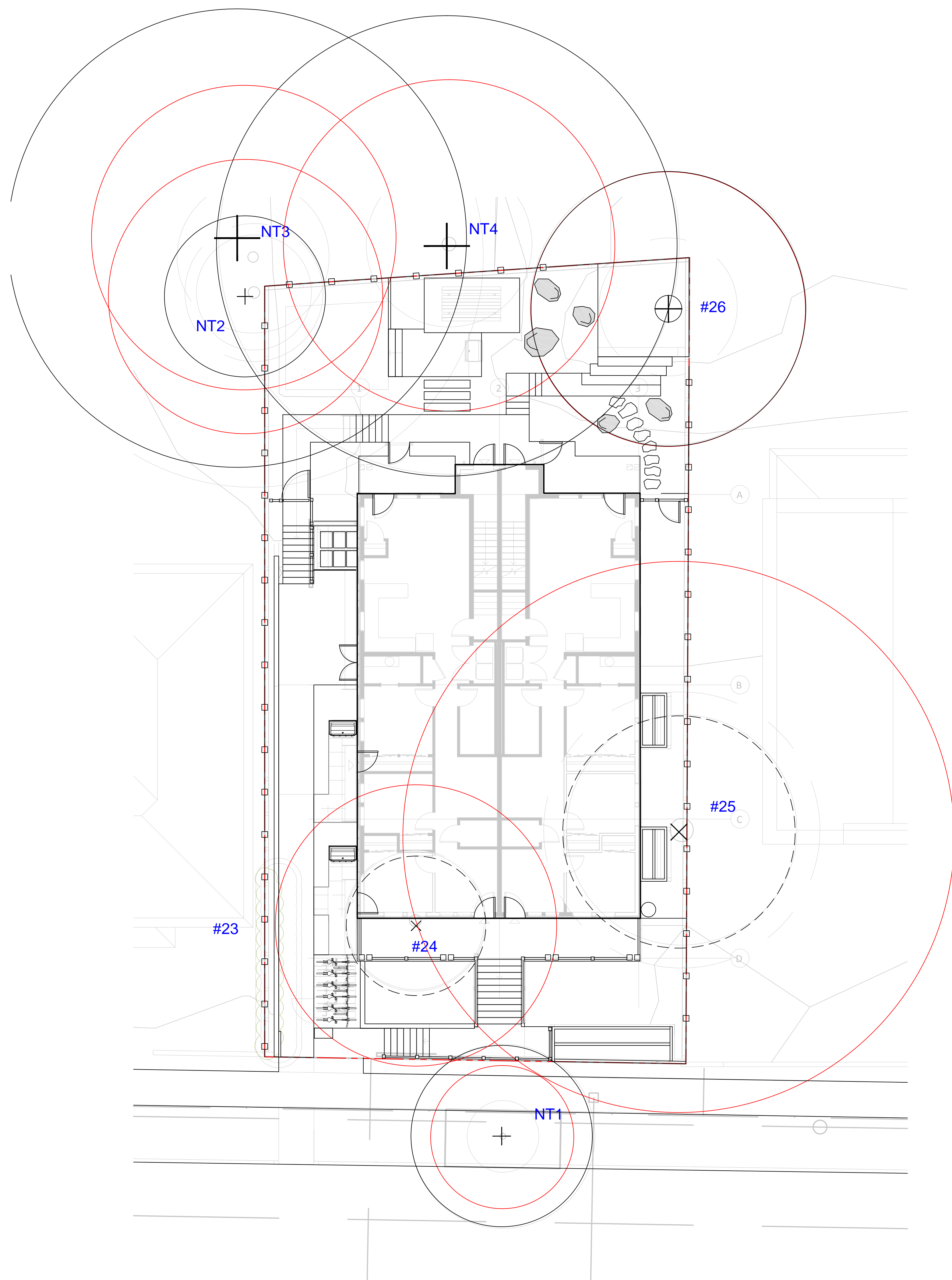


DRAWING TITLE:
**TREE REMOVAL &
PROTECTION PLAN**

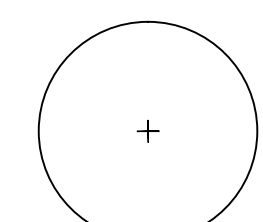
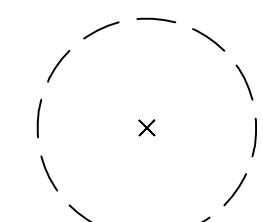
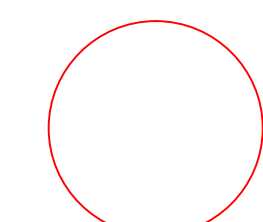
DWG NO:

SCALE: 1:100

L0



LEGEND

-  EXISTING TREE TO REMAIN
-  EXISTING TREE TO BE REMOVED
-  EXTENT OF CRITICAL ROOT ZONE
• SEE ARBORIST REPORT
- OS7** TREE TAG ID
• SEE ARBORIST REPORT

NOTE:
SEE ARBORIST REPORT FOR TREE PROTECTION FENCING AND OTHER REQUIREMENTS FOR WORKING AROUND EXISTING TREES

Capital Tree Service Inc.									
Appendix A - Tree Inventory/Hazard Ratings Summary									
Location: 633 Belton Ave, Victoria, BC V9A 2Z5					Date: October 1, 2021				
Conditions: Mostly Cloudy, 11°C, N 10 km/h									
Tag #	Species	DBH (cm)	PRZ (m)	Height (m)	Health/Structure	Canopy Spread	Bylaw Protected	Action	Comments/Recommendations
NT1	Red maple	26	3.12	9	F-P/P	8	No	Retain	Heavily Utility Pruned. Seams and included bark at unions. Epicormic growth. Viable rooting area minimized by hardscapes. Retain and Protect
23	Chinese arborvitae	13	1.56	5	F-P/P	2	No	TBD	Hedgerow. Multiple Stems splitting between grade and 0.5m above grade. Seams and included bark at unions. Poor CODIT. Rooting area minimized by retaining wall.
24	Pear	51	6.12	4	F-F/P	6	Yes	TBD	Overly mature pear. Heavily pruned for fruiting potential. Moss on Branches and one side of trunk. One branch supported. Cavity on basal stem. 3 time stem 1 meter above grade. Small deadwood.
25	Yellow cedar	100	12	13	F/P	10	Yes	TBD	23 time stem between grade and 1.4m above grade. Sweeping J shaped stems. Seams and included bark at many unions. Previously topped. Stems and branches growing into each other. Leaves showing good colour.
NT2	Cherry	Est 50	6	10	F-P/P	7	Yes	Retain	Private Tree. Previously Topped. Some poor pruning cuts. Narrow angles of attachment. Included bark in unions. Fungal ooze. Poor CODIT. Many large watersprouts. Retain and Protect
NT3	Sitka spruce	Est 55	6.6	20	F/F	20	Yes	Retain	Private Tree. Vigorous growth. Fence obscuring view of basal stem. Healthy Tree. Retain and Protect
NT4	Western red cedar	Est 60	7.2	20	F-P/F	20	Yes	Retain	Private Tree. Drought stressed. Fence obscuring view of basal stem. Retain and Protect
26	Himalayan cedar	50	6	8.6	F-F-P	12	Yes	TBD	Growing though deck. Large J shaped branches. Branches pruned at property line on 2 sides. Healthy CODIT.

NO.	ISSUED FOR	YYMMDD
1	REVIEW	2021-11-02
2	DEVELOPMENT PERMIT	2021-12-23

SEAL

NORTH ARROW

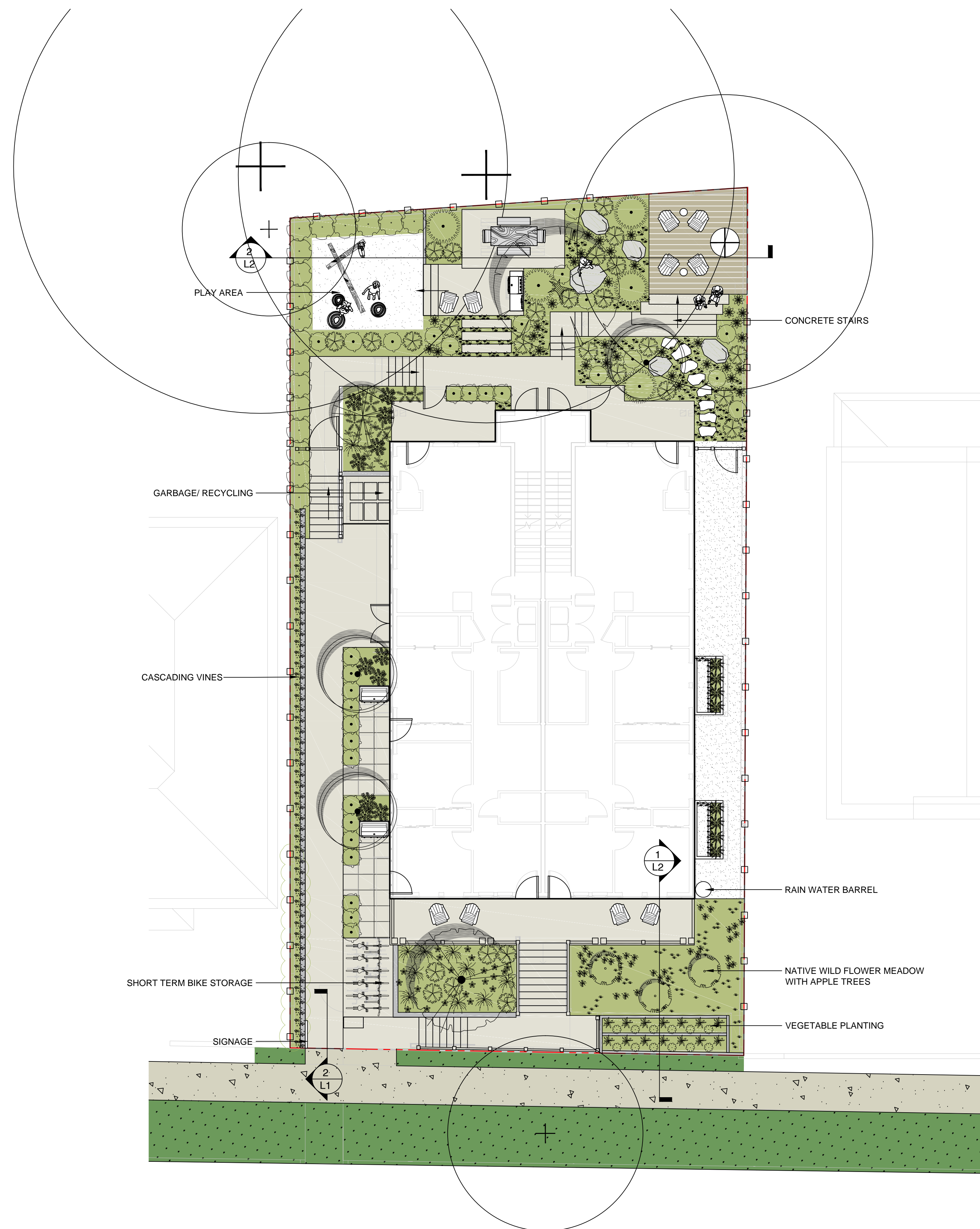


DRAWING TITLE:
LANDSCAPE PLAN

DWG NO:

SCALE: **AS NOTED**

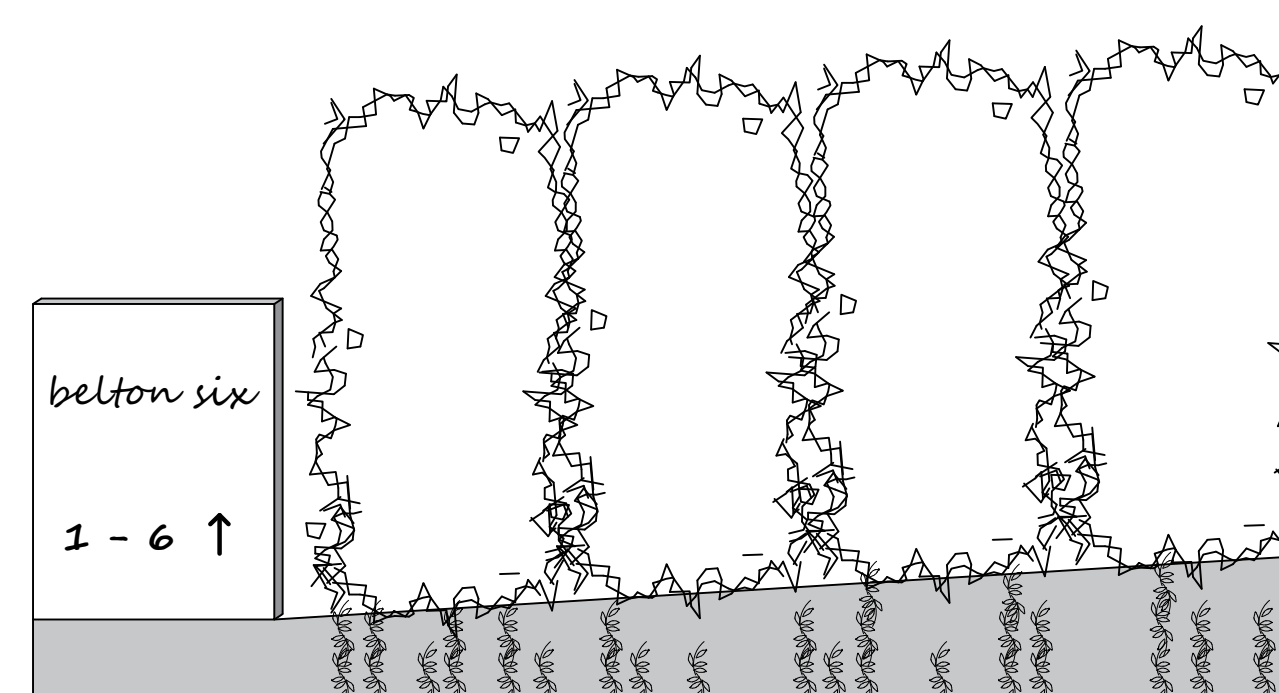
L1



LEGEND

- PROPERTY LINE
- ON-SITE LANDSCAPE AREA
 - 450 mm DEPTH 1P GROWING MEDIUM FOR SHRUB BEDS
 - 1000 mm DEPTH 1P GROWING MEDIUM FOR TREE PITS
 - 50 mm DEPTH ORGANIC MULCH
- CONCRETE WALKWAY / PATIO
 - LIGHT SANDBLAST FINISH
- GRAVEL MAINTENANCE AREA
- PRIVATE PATIO WITH PAVER
- WOOD DECK
- SOD
 - MUNICIPAL BOULEVARD AREA
 - REPAIR TO MUNICIPAL STANDARD
- MUNICIPAL SIDEWALK
- WOOD FENCE

NOTE:
1. ALL LANDSCAPE AREAS TO BE IRRIGATED WITH AN AUTOMATIC IRRIGATION SYSTEM DESIGNED AND INSTALLED TO IIABC STANDARDS.
2. ALL SOFT LANDSCAPE MATERIALS AND INSTALLATION TO BE AS PER THE BC LANDSCAPE STANDARD, CURRENT EDITION.
3. ALL HARD LANDSCAPE MATERIALS AND INSTALLATION TO BE AS PER MMCD OR MANUFACTURER'S SPECIFICATIONS.

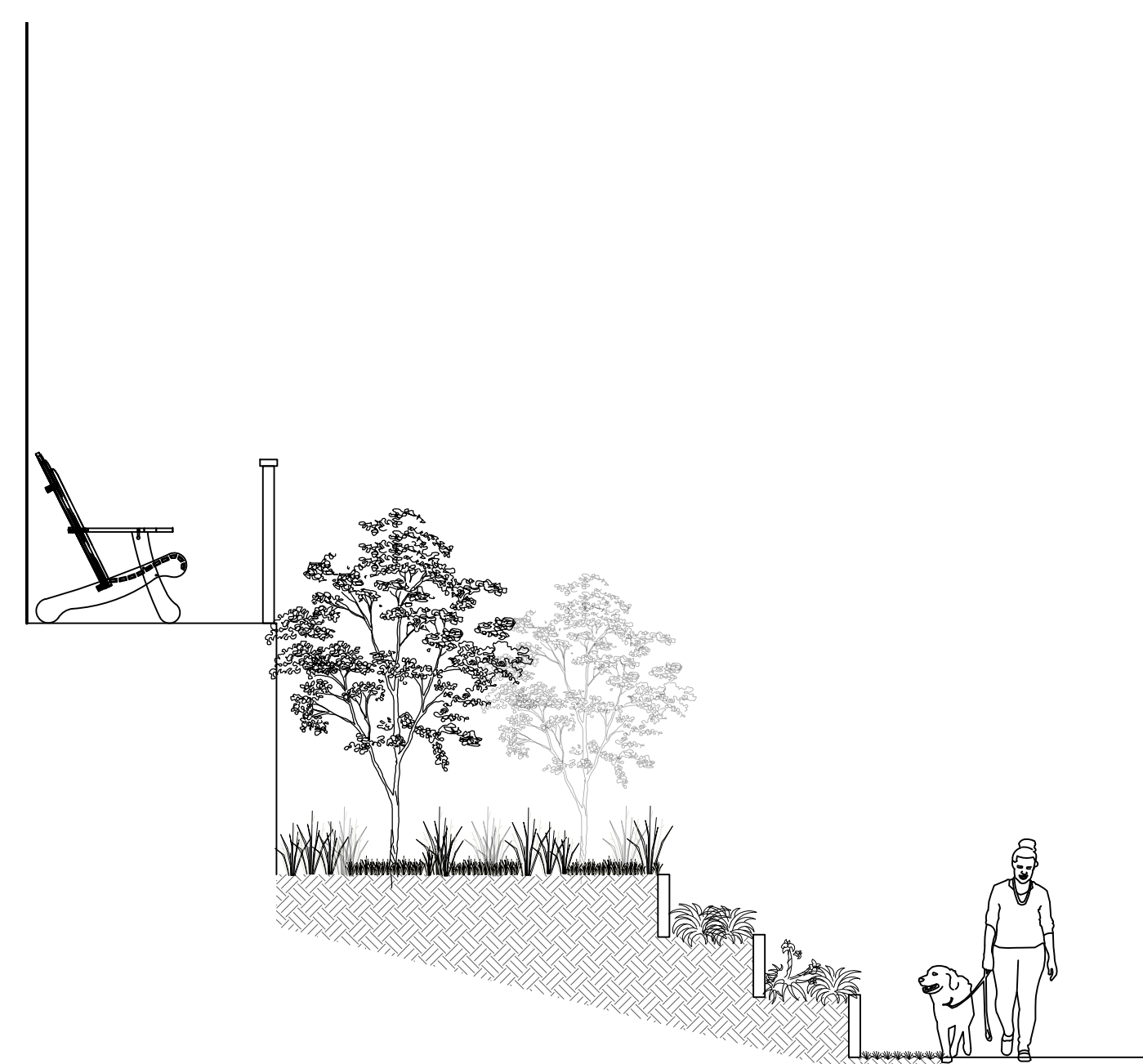


OWNER/CLIENT:
LAPIS HOMES

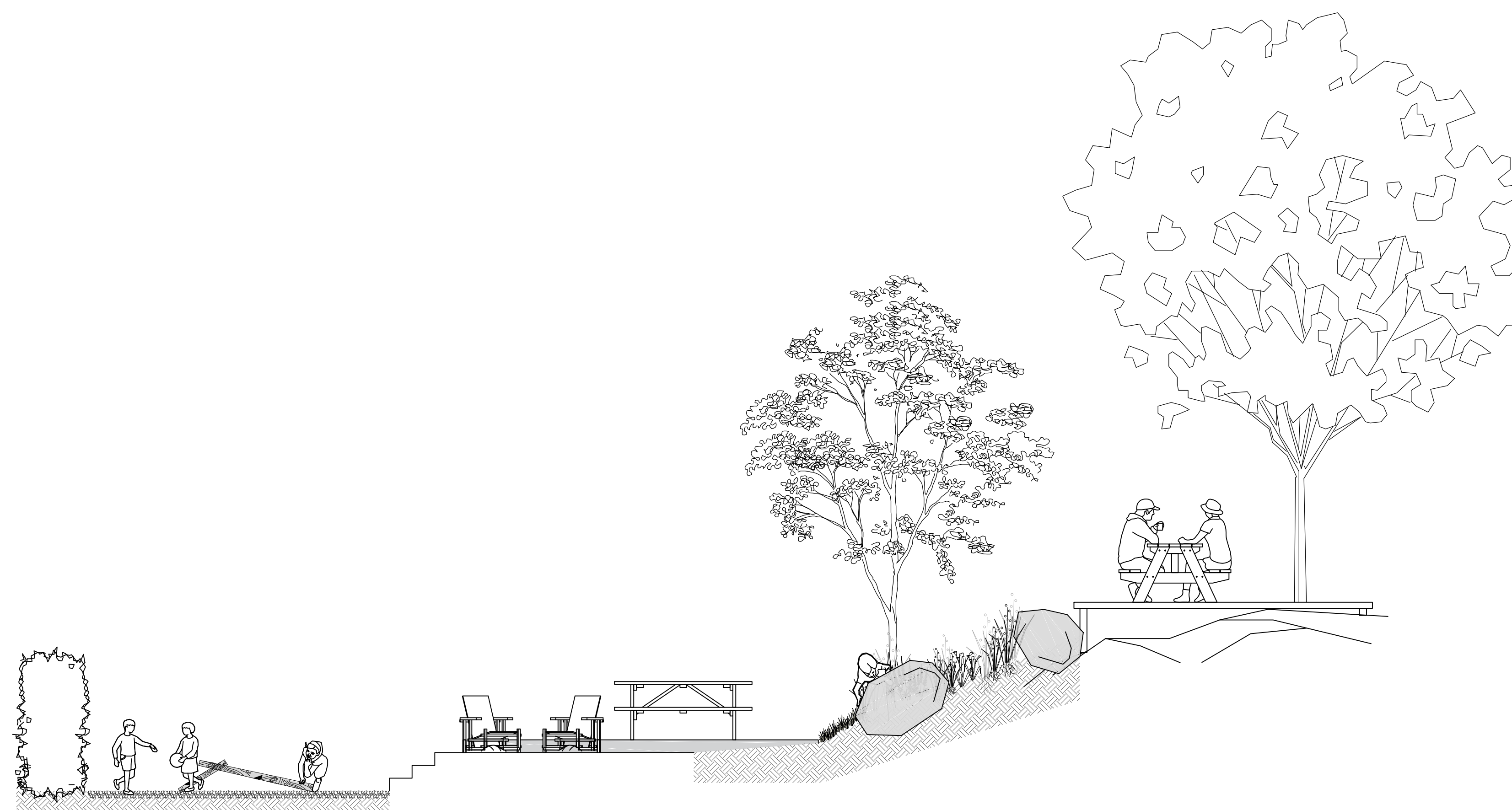
PROJECT NAME:

PROJECT ADDRESS:
**633 BELTON AVE.
 VICTORIA, BC
 V9A 2Z5**

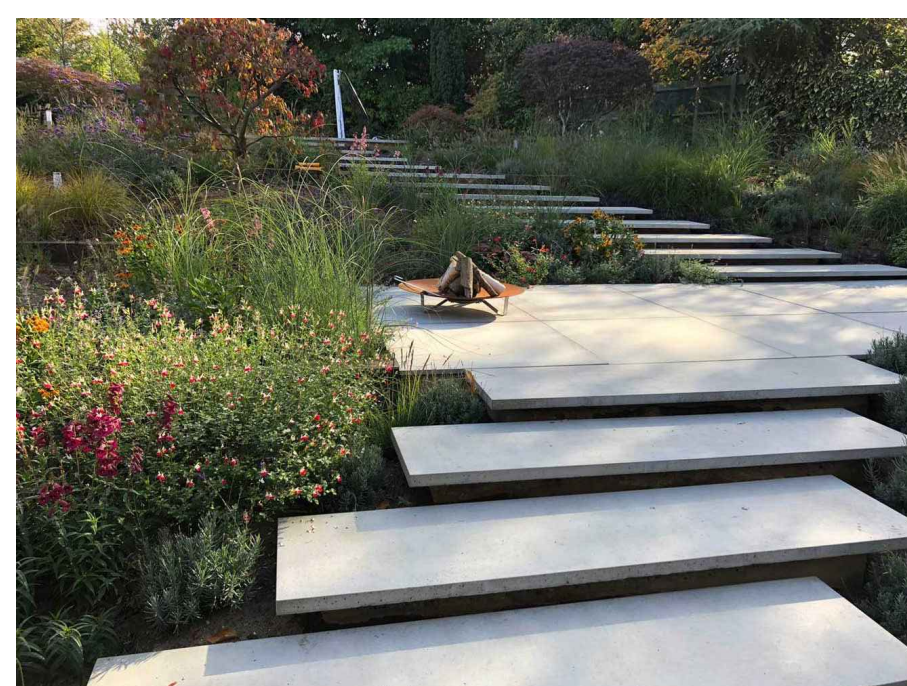
DESIGNED BY: **BIANCA BODLEY**
 DRAWN BY: **KARIANNE HOWARTH**



1
 L2 FRONT MEADOW GARDEN WITH TIERED VEGETABLE BEDS



2
 L2 REAR GARDEN SECTION



IMAGERY OF STAIRS WITH MASSES LOW MAINTENANCE PLANTS



CONCRETE TERRACED VEGETABLE GARDEN



NATURAL PLAY AREA



NO.	ISSUED FOR	YYMMDD
1	REVIEW	2021-11-02
2	DEVELOPMENT PERMIT	2021-12-23

SEAL

NORTH ARROW

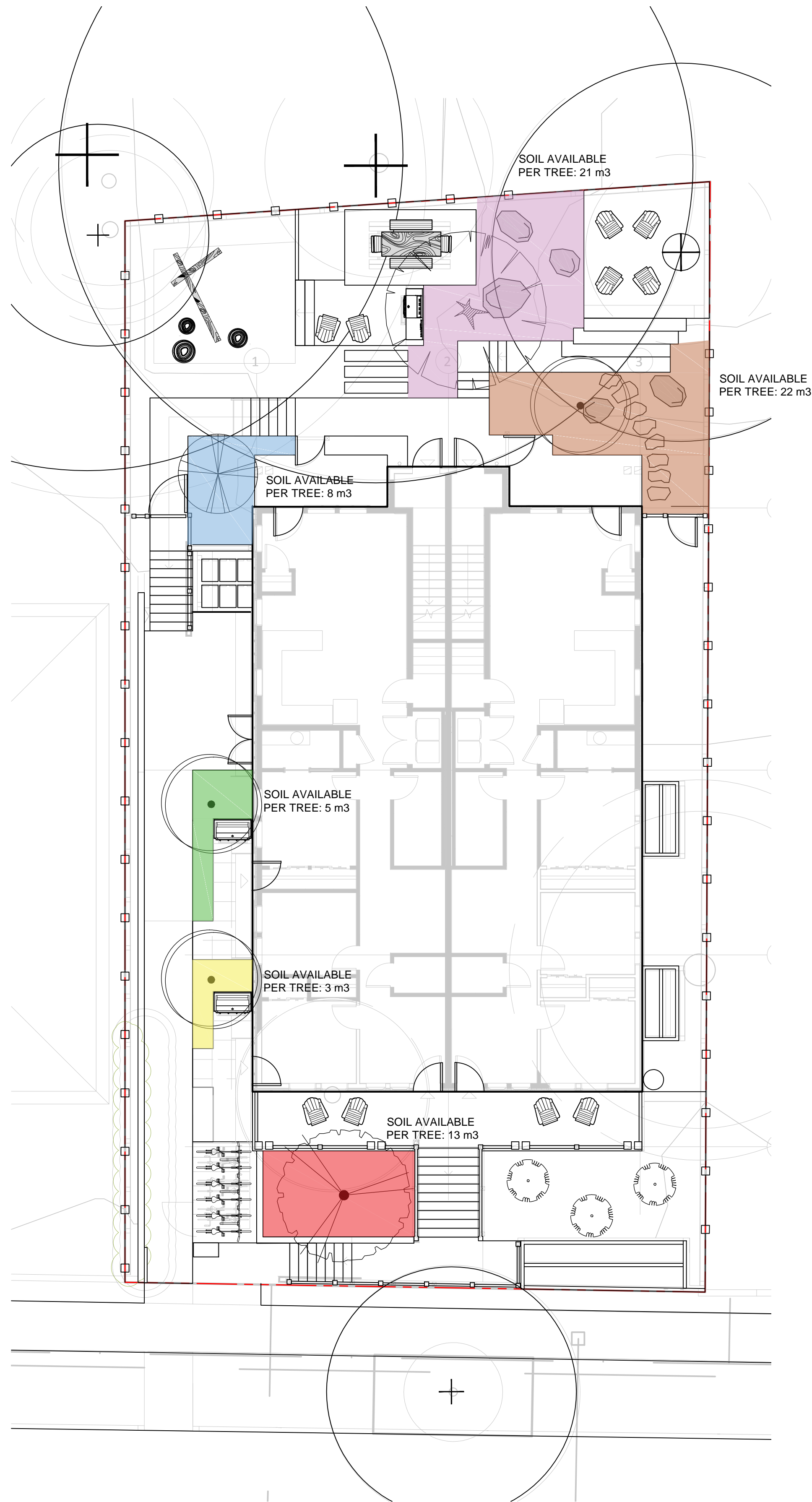


DRAWING TITLE:
SECTIONS

DWG NO:

SCALE: **NTS**

L2



TREE SCHEDULE								
Quantity	Symbol	Latin Name	Common Name	Container	Caliper	Height	Height at Maturity (m)	Spread at Maturity (m)
1		<i>Magnolia sieboldii</i>	Oyama Magnolia	B&B	50 mm		4.5	4.5
3		<i>Acer palmatum</i> 'Sango-Kaku'	Coral Bark Maple	B&B	50 mm		6	4.5
1		<i>Amelanchier x grandiflora</i> 'Autumn Brilliance'	Apple Serviceberry	B&B	35 mm		6	6
1		<i>Chamaecyparis nootkatensis</i> 'Pendula'	Weeping Nootka Cypress	B&B		3.5 m	9	3
3		<i>Chamaecyparis nootkatensis</i> 'Green Arrow'	Nootka Cypress 'Green Arrow'	B&B		2.5 m	5	1

NOTES:
 1. PLANTS IN PLANT LISTS ARE SPECIFIED ACCORDING TO THE CANADIAN NURSERY LANDSCAPE ASSOCIATION CANADIAN STANDARDS FOR NURSERY STOCK AND SECTION 12, CONTAINER GROWN PLANTS FROM THE BC LANDSCAPE STANDARD, CURRENT EDITION.



OYAMA MAGNOLIA



CORAL BARK MAPLE



APPLE SERVICEBERRY



NOOTKA CYPRESS 'GREEN ARROW'



WEeping NOOTKA CYPRESS



1608 Camosun Street, Victoria BC V8T 3E6
 Info@biophilacollective.ca 250 590 1156

OWNER/CLIENT:
LAPIS HOMES

PROJECT NAME:

PROJECT ADDRESS:
**633 BELTON AVE.
 VICTORIA, BC
 V9A 2Z5**

DESIGNED BY: **BIANCA BODLEY**
 DRAWN BY: **KARIANNE HOWARTH**

NO.	ISSUED FOR	YY/MM/DD
1	REVIEW	2021-11-02
2	DEVELOPMENT PERMIT	2021-12-23

SEAL



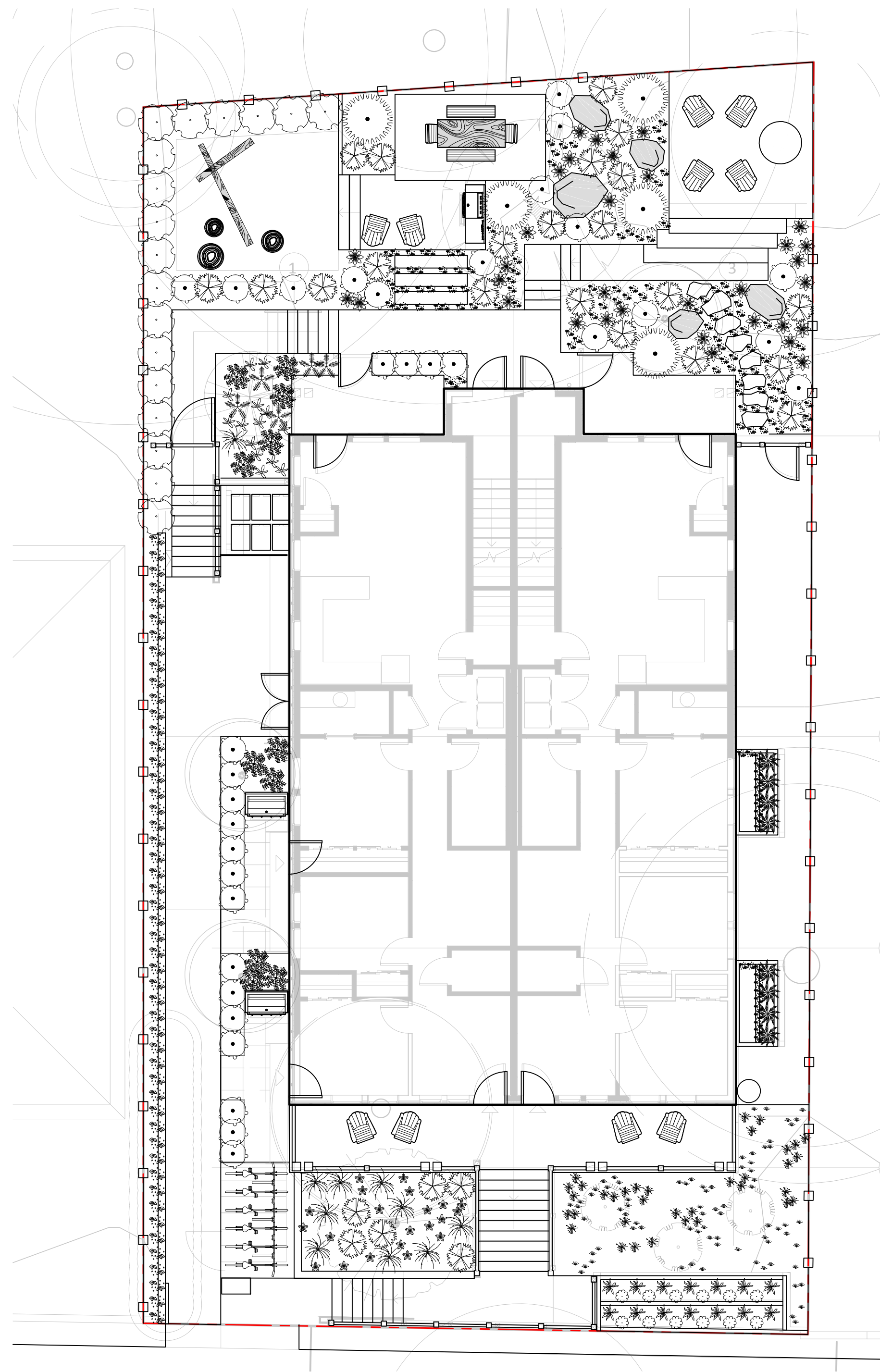
DRAWING TITLE:

TREE PLANTING PLAN

DWG NO:

L3

SCALE: 1:100



PLANT SCHEDULE						
Quantity	Symbol	Latin Name	Common Name	Container	Height at Maturity (m)	Spread at Maturity (m)
20	*	<i>Verbena bonariensis</i>	Tall Verbena	1 Gallon	0.6-1.2	0.4-0.6
10	☼	<i>Pennisetum alopecuroides</i>	Fountain Grass	1 Gallon	0.9	0.9
15	☼	<i>Arctostaphylos uva-ursi</i> 'Massachusetts'	Massachusetts Kinnikinnick	Flat	0.3	3
33	☼	<i>Prostanthera cuneata</i>	Australian Mint	1 Gallon	0.9m	0.9m
27	☼	<i>Hebe pinguifolia</i> 'Sutherlandii'	Sutherland Hebe	1 Gallon	0.3-0.6	0.6-0.9
7	☼	<i>Polystichum polyblepharum</i>	Japanese Tassel Fern	1 Gallon	0.6-0.9	0.6-0.9
5	☼	<i>Pinus mugo</i> var. <i>pumilio</i>	Dwarf Mugo Pine	2 Gallon	1.2	1.8
18	☼	<i>Ligustrum ovalifolium</i>	California Privet	3 Gallon	3	3
11	☼	<i>Lavandula angustifolia</i>	English Lavender	1 Gallon	0.9m	0.9m
5	☼	<i>Thymus vulgaris</i>	Thyme	1 Gallon	0.15-0.3m	0.15-0.3m
14	☼	<i>Salvia officinalis</i>	Common Sage	1 Gallon	0.45	0.4m
33	☼	<i>Rudbeckia hirta</i>	Black-eyed Susan	1 Gallon	0.9	0.6

NOTES:
1. PLANTS IN PLANT LISTS ARE SPECIFIED ACCORDING TO THE CANADIAN NURSERY LANDSCAPE ASSOCIATION CANADIAN STANDARDS FOR NURSERY STOCK AND SECTION 12, CONTAINER GROWN PLANTS FROM THE BC LANDSCAPE STANDARD, CURRENT EDITION.

SUN PLANTING PALETTE



FOUNTAIN GRASS

TALL VERBENA



LAVENDER

THYME

SAGE



AUSTRALIAN MINT

SUTHERLAND HEBE

CALIFORNIA PRIVET

BLACK-EYED SUSAN

DWARF MUGO PINE

SHADE PLANTING PALETTE



TASSEL FERN

WESTERN SWORD FERN

MASSACHUSETTS KINNICKINNICK



1608 Camosun Street, Victoria BC V8T 3E6
Info@biophiliacollective.ca 250 590 1156

OWNER/CLIENT:
LAPIS HOMES

PROJECT NAME:

PROJECT ADDRESS:
**633 BELTON AVE.
VICTORIA, BC
V9A 2Z5**

DESIGNED BY: **BIANCA BODLEY**
DRAWN BY: **KARIANNE HOWARTH**

NO.	ISSUED FOR	YYMMDD
1	REVIEW	2021-11-02
2	DEVELOPMENT PERMIT	2021-12-23

SEAL

NORTH ARROW



DRAWING TITLE:

PLANTING PLAN

DWG NO:

SCALE: 1:100

L4