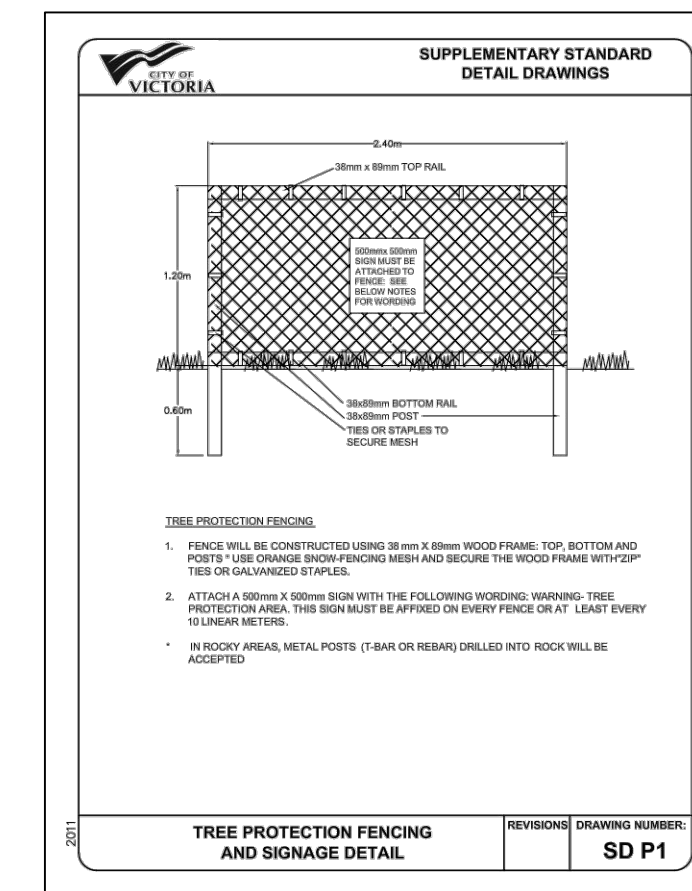
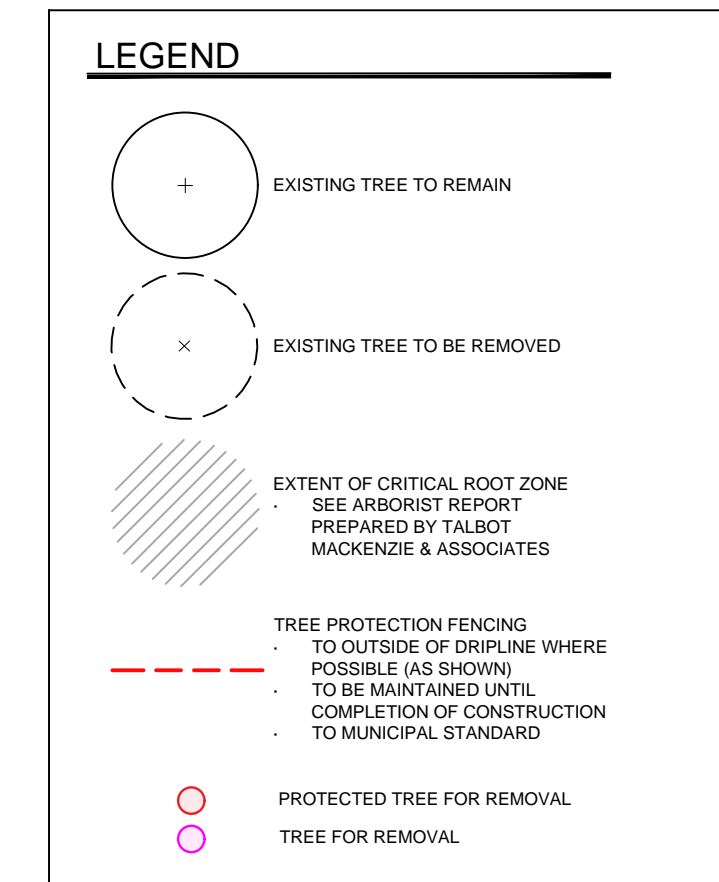


EXISTING TREE REMOVAL AND PROTECTION

TOTAL NUMBER OF TREES ON SITE:	7
NUMBER OF BYLAW PROTECTED TREES ON SITE:	5
NUMBER OF BYLAW PROTECTED TREES ON SITE TO BE REMOVED:	5
NUMBER OF REPLACEMENT TREES REQUIRED ON SITE:	10
NUMBER OF NON BYLAW PROTECTED TREES ON SITE:	2
NUMBER OF NON BYLAW PROTECTED TREES ON SITE TO BE REMOVED:	2
TOTAL NUMBER OF TREES ON MUNICIPAL PROPERTY:	1
NUMBER OF BYLAW PROTECTED TREES ON MUNICIPAL PROPERTY:	1
NUMBER OF BYLAW PROTECTED TREES ON M. PROPERTY TO BE REMOVED:	1
NUMBER OF NON BYLAW PROTECTED BOULEVARD TREES TO BE REMOVED:	0
NUMBER OF REPLACEMENT TREES REQUIRED ON MUNICIPAL PROPERTY:	2
TOTAL NUMBER OF TREES TO BE REMOVED:	8
TOTAL NUMBER OF REPLACEMENT TREES REQUIRED:	12



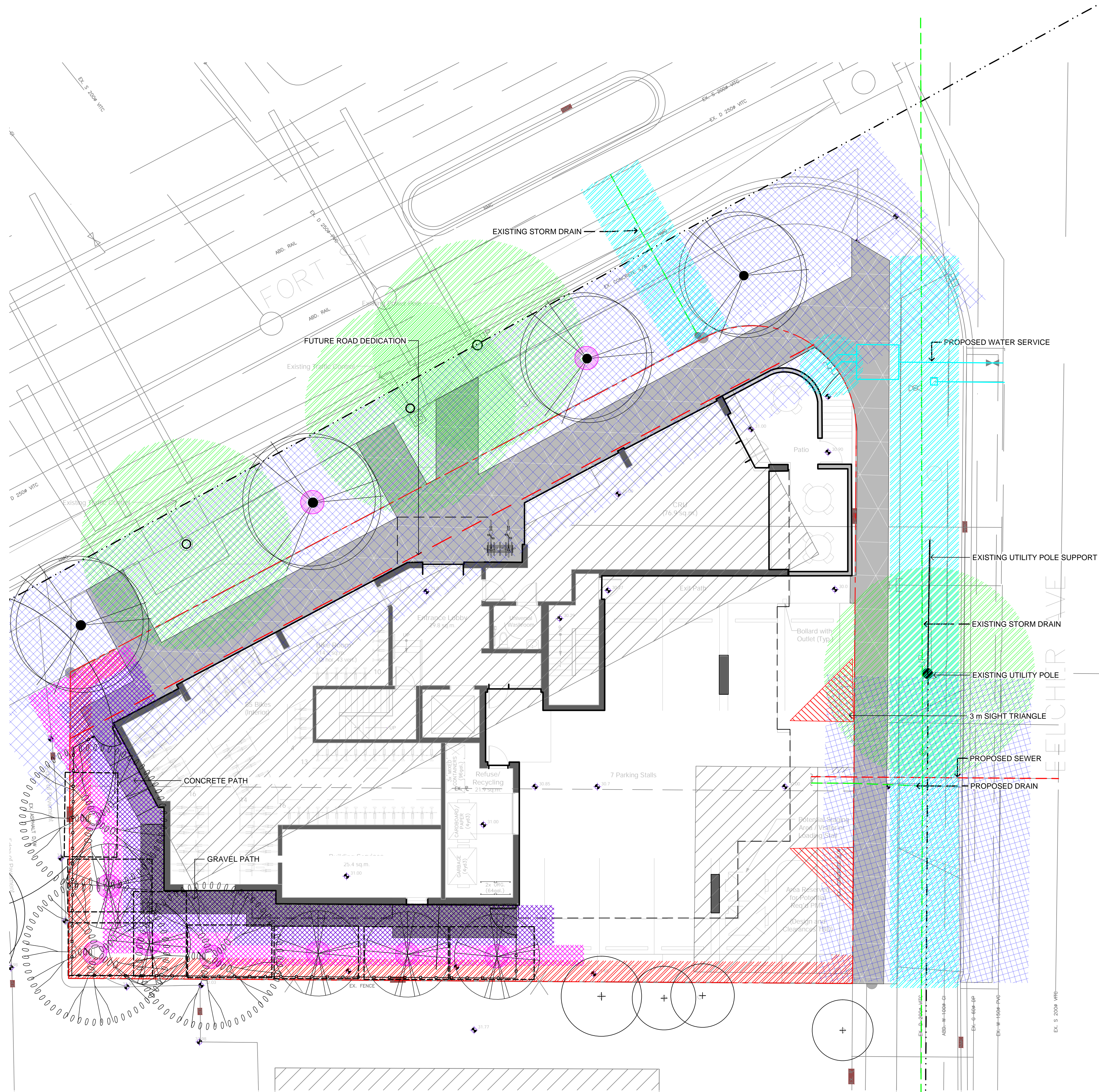
Inventory date: September 9, 2020 Page 1 of 4

Tree Resource Spreadsheet - 1643 Fort Street

Tree ID	Common Name	Latin Name	DBH (cm) - approximate	Crown Spread (meters)	CRZ (m) - (DBH x 8)	Relative Importance (rank, 1-10)	Health	Structure	Remarks and Recommendations	Bylaw Protected	Retention Status	Impacts
NT1	Cherry	<i>Prunus spp.</i>	73 below union	10.0	9.0	Moderate	Fair	Fair-poor	Municipal tree. Decay in most pruning wounds.	Yes (municipal)		
NT2	Lawson Cypress	<i>Chamaecyparis lasiocarpa</i>	47 (25 + 60% of 20, 16)	3.0	7.0	Poor	Good	Fair	Close proximity to building foundation. Shared and topped.	Yes (by multi-stem calculation)		
NT3	Lawson Cypress	<i>Chamaecyparis lasiocarpa</i>	27.0	3.0	4.0	Poor	Good	Fair	Close proximity to building foundation. Shared and topped.	No		
NT4	Elm	<i>Ulmus spp.</i>	33.0	6.0	4.0	Moderate	Fair	Fair	Leaf miner cosmetic damage. Surface roots. Appears to be 3 more in the row that were removed to the west.	Yes		
NT5	Elm	<i>Ulmus spp.</i>	34.0	7.0	4.0	Moderate	Fair	Fair	Topped previously. Leaf miner cosmetic damage. Surface roots. Appears to have been 3 more in the row that were removed (to the west).	Yes		
NT6	Elm	<i>Ulmus spp.</i>	33.0	5.0	4.0	Moderate	Fair	Fair	Leaf miner cosmetic damage. Surface roots. Appears to have been 3 more in the row that were removed (to the west).	Yes		
NT7	Elm	<i>Ulmus spp.</i>	43.0	8.0	5.0	Moderate	Fair	Fair	Leaf miner cosmetic damage. Surface roots. Appears to have been 3 more in the row that were removed (to the west).	Yes		
NT8	Crabapple	<i>Malus spp.</i>	-20	4.0	2.0	Good	Fair	Fair	Clearance pruned. Neighbour's trees. Ivy covered.	No		
NT9	Crabapple	<i>Malus spp.</i>	-20	3	2.0	Good	Fair	Fair	Clearance pruned. Neighbour's trees. Ivy covered.	No		
NT10	Crabapple	<i>Malus spp.</i>	-20	3	2.0	Good	Fair	Fair	Clearance pruned. Neighbour's trees. Ivy covered.	No		
NT11	Beech (purple)	<i>Fagus sylvatica</i>	23	4	3.5	Poor	Good	Good	Close proximity to carport foundation. Some clearance pruning previously.	No		
NT12	Austrian Pine	<i>Pinus nigra</i>	-30	7.0	3.0	Good	Fair	Good	Asymmetric crown. Elevated from subject property 45cm, protected by retaining wall. Barrier fencing due to development on neighbouring property.	Yes		
NT13	Austrian Pine	<i>Pinus nigra</i>	-40	8	4.0	Good	Fair	Fair-poor	Codominant leaders with included bark, swelling from reaction wood. Asymmetric crown.	Yes		
NT14	Austrian Pine	<i>Pinus nigra</i>	-35	9	3.5	Good	Fair	Good	Asymmetric crown.	Yes		
NT15	Garry Oak	<i>Quercus garryana</i>	-75	15	7.5	Good	Good	Fair	Codominant leaders with included bark. Barrier fencing due to development on neighbouring property.	Yes		

Prepared by:
Talbot Mackenzie & Associates
ISA Certified and Consulting Arborists
Phone: (250) 479-8733
Fax: (250) 479-7050
email: tma@talbotmackenzie.com





LEGEND

TREE PLANTING RESTRICTIONS - BC HYDRO

- OVERHEAD POWER LINE
- 5.0 m OFFSET, 5.0 m MAX TREE HEIGHT
- 10.0 m OFFSET, 12.0 m MAX TREE HEIGHT
- 5.0 m OFFSET FROM HYDRO OR LIGHT POLE
- 1.5 m OFFSET FROM EDGE OF UTILITY TO CENTRE OF TREE

REPLACEMENT TREE PLANTING RESTRICTIONS

- 1.0 m FROM PROPERTY LINE: NO TREES
- 2.0 m FROM BUILDING FOUNDATION OR WALL: NO TREES
- BETWEEN 2.0-3.0 m FROM BUILDING FOUNDATION OR WALL: TREES MUST BE UNDER 8.0 m (MATURE HEIGHT)
- 2.0 m OFFSET FROM DRIVEWAY OR WALKWAY
- POTENTIAL REPLACEMENT TREE LOCATION
- EXISTING TREE TO REMAIN

SOIL VOLUME ANALYSIS

BCNA STANDARD MIN TREE SOIL VOLUME

- ALL TREES: 6m³
- 60 cm DEEP (24") FOR 10 m² MIN AREA AROUND TREE
- 45 cm DEEP (18") IF OVER 13 m²

TOTAL REPLACEMENT TREES REQUIRED: 12

ON-SITE REPLACEMENT TREES REQUIRED: 10

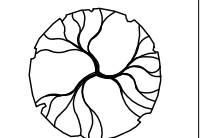
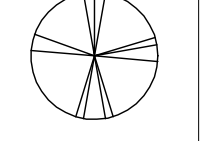
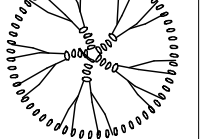
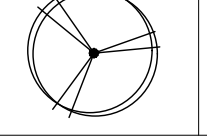
ON-SITE REPLACEMENT TREES PROPOSED: 8

NON REPLACED TREES: 2

MUNICIPAL REPLACEMENT TREES REQUIRED: 2

MUNICIPAL REPLACEMENT TREES PROPOSED: 2

TREE SCHEDULE

ID	Quantity	Symbol	Latin Name	Common Name	Container	Caliper	Size
1	1		<i>Acer circinatum</i>	Vine maple	B&B		
5	5		<i>Cornus nuttallii</i>	Pacific dogwood	B&B	4cm	
3	3		<i>Quercus garryana</i>	Garry oak	B&B	4 cm	
4	4		<i>Prunus ceracifera nigra</i>	Black cherry plum	B&B	4cm	