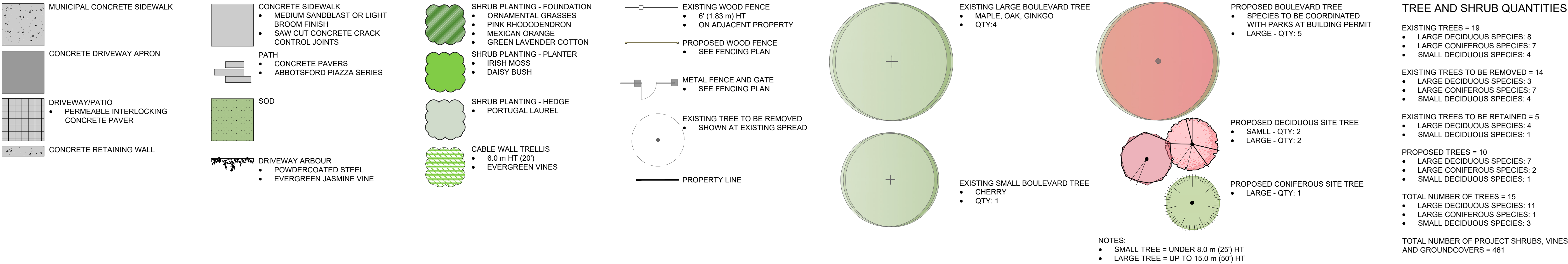



LEGEND

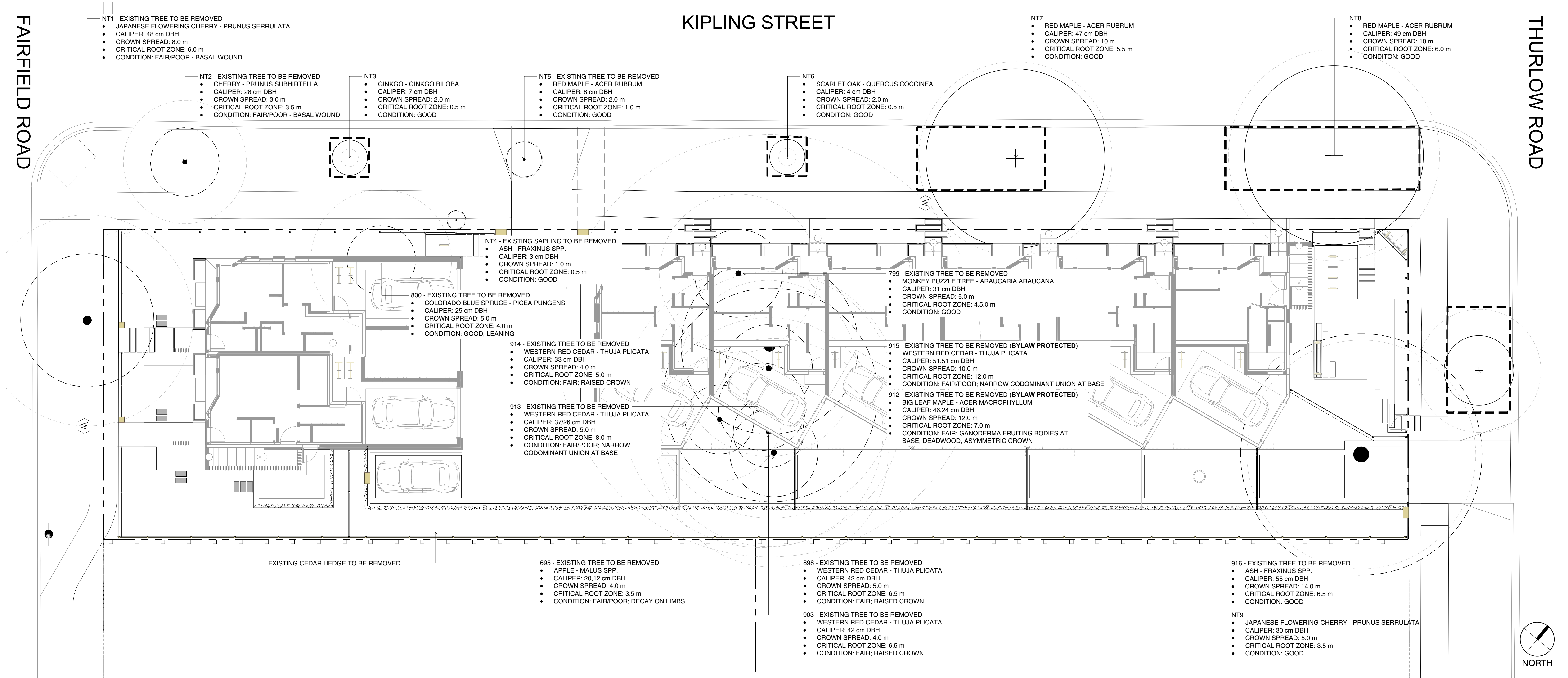




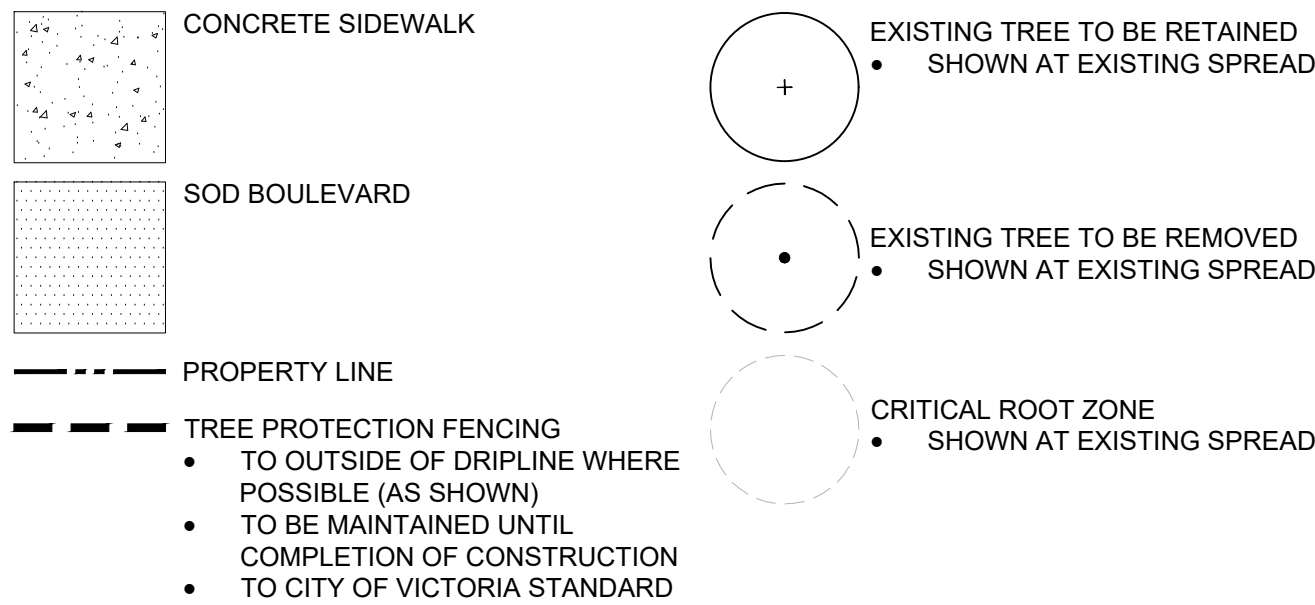
**Revisions**

**Received Date:**  
**December 13, 2019**





LEGEND

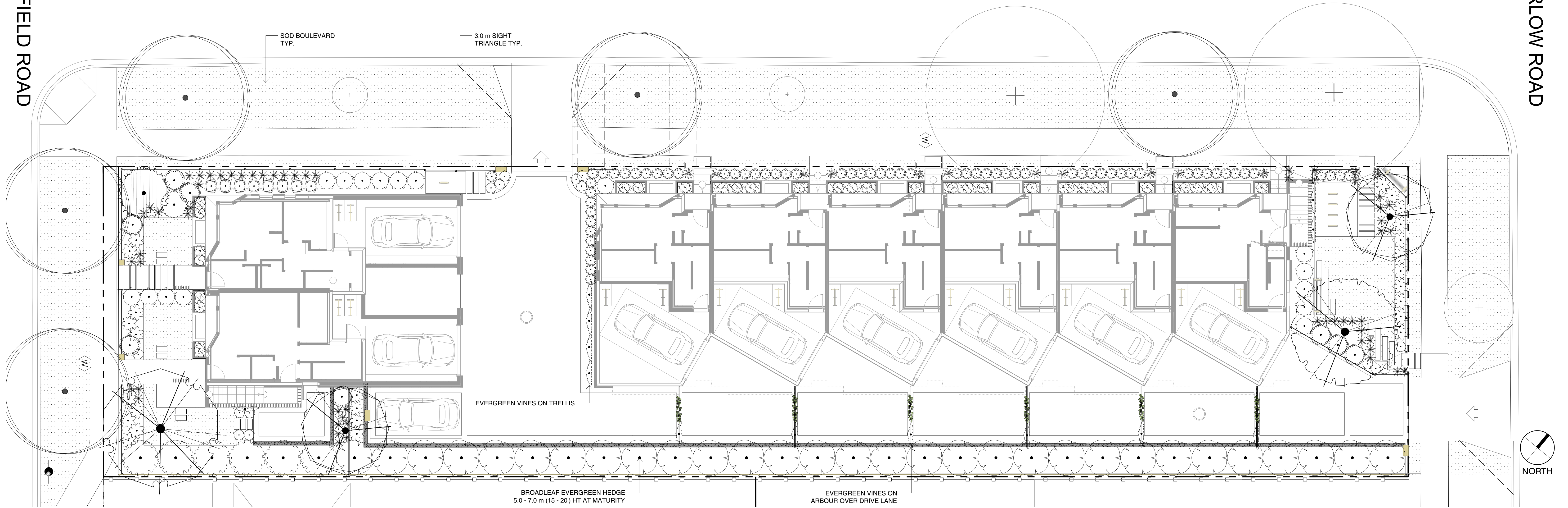


EXISTING TREE QUANTITIES

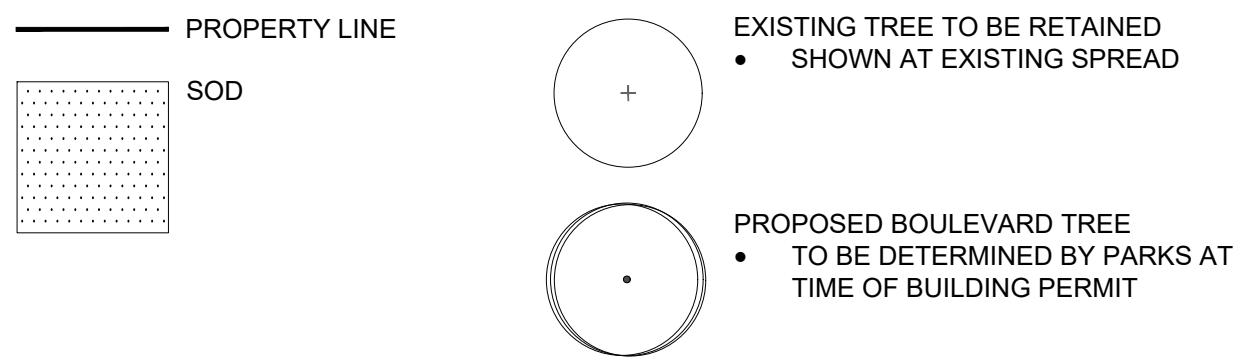
- EXISTING TREES = 19
- LARGE DECIDUOUS SPECIES: 8
  - LARGE CONIFEROUS SPECIES: 7
  - SMALL DECIDUOUS SPECIES: 4
- EXISTING TREES TO BE REMOVED = 14
- LARGE DECIDUOUS SPECIES: 3
  - LARGE CONIFEROUS SPECIES: 7
  - SMALL DECIDUOUS SPECIES: 4
- EXISTING TREES TO BE RETAINED = 5
- LARGE DECIDUOUS SPECIES: 4
  - SMALL DECIDUOUS SPECIES: 1

- NOTES:
- ARBORIST REPORT RECOMMENDS REMOVAL AND REPLACEMENT OF NT1 AND NT2 DUE TO POOR CONDITION, AND NT4 DUE TO ITS UNSUITABLE LOCATION FOR LONG TERM RETENTION
  - SMALL TREE = UNDER 8.0 m (25') HT; LARGE TREE = UP TO 15.0 m (50') HT





LEGEND



- NOTES:
- 1. PLANTS IN PLANT LISTS ARE SPECIFIED ACCORDING TO THE CANADIAN NURSERY LANDSCAPE ASSOCIATION CANADIAN STANDARDS FOR NURSERY STOCK AND SECTION 12, CONTAINER GROWN PLANTS FROM THE BC LANDSCAPE STANDARD, CURRENT EDITION.
  - 2. ALL LANDSCAPE AREAS TO BE IRRIGATED WITH AN AUTOMATIC IRRIGATION SYSTEM DESIGNED TO IAABC STANDARDS.
  - 3. ALL PROPOSED BOULEVARD TREES TO HAVE 10m<sup>3</sup> MIN. GROWING MEDIUM.
  - 4. SMALL TREE = UNDER 8.0 m HT, LARGE TREE = UP TO 15.0 m HT.

PLANT SCHEDULE - TREES

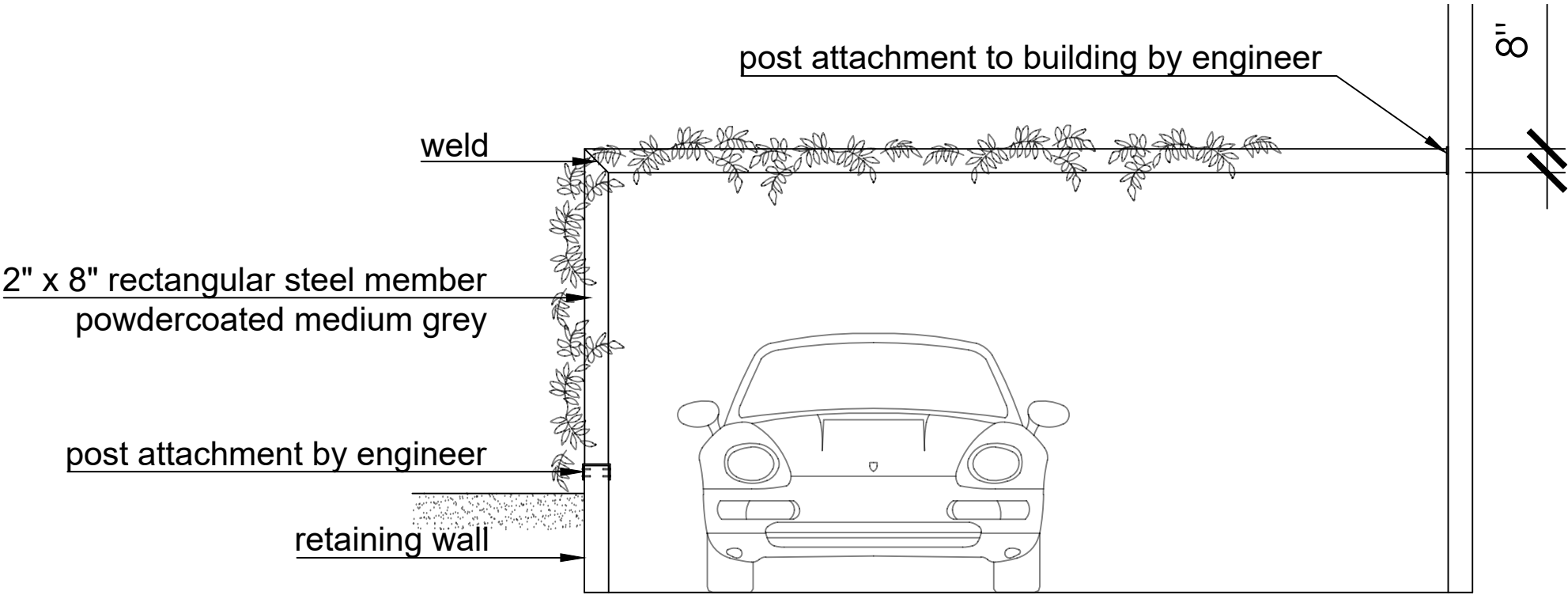
TREES	QTY	BOTANICAL / COMMON NAME	CONT	CAL	REMARKS
	1	CERCIDIPHYLLUM JAPONICUM / KATSURA TREE	B@B	60 MM	LARGE TREE
	1	CHAMAECYPARIS NOOTKATENSIS 'PENDULA' / WEEPING NOOTKA FALSE CYPRESS	70 MM		LARGE TREE
	1	LIQUIDAMBAR STYRACIFLUA 'AURORA' / AURORA SWEET GUM	B@B	60 MM	LARGE TREE
	2	STYRAX JAPONICUS / JAPANESE SNOWBELL	B@B	50 MM	SMALL TREE

PLANT SCHEDULE - GROUNDCOVER

GROUND COVERS	QTY	BOTANICAL / COMMON NAME	CONT	SPACING	REMARKS
	174	SAGINA SUBULATA / IRISH MOSS	PLUG	300mm	

PLANT SCHEDULE

SHRUBS	QTY	BOTANICAL / COMMON NAME	CONT	SPACING
	30	BRACHYGLOTTIS GREYI / DAISY BUSH	#2 CONT	0.60m
	56	CAREX TESTACEA / CAREX	#1 CONT	0.60m
	6	CHOISYA TERNATA / MEXICAN ORANGE	#3 CONT	2m
	13	JASMINUM POLYANTHUM / PINK JASMINE TRELLIS	#1 CONT	1.50m
	15	LAVANDULA X INTERMEDIA 'PROVENCE' / PROVENCE LAVENDIN	#1 CONT	0.60m
	8	MISCANTHUS SINENSIS 'GRAZIELLA' / GRAZIELLA MAIDEN GRASS	#1 CONT	0.80m
	8	MISCANTHUS SINENSIS 'MORNING LIGHT' / EULALIA GRASS	#2 CONT	1.20m
	14	NASSELLA TENUISSIMA / TEXAS NEEDLE GRASS	#1 CONT	0.60m
	30	PRUNUS LUSITANICA / PORTUGAL LAUREL	#5 CONT	2m
	1	RHODODENDRON X 'CHRISTMAS CHEER' / CHRISTMAS CHEER RHODODENDRON	#5 CONT	1.50m
	65	SANTOLINA VIRENS / GREEN LAVENDER COTTON	#1 CONT	0.60m
	25	SARCOCOCCA CONFUSA / SWEETBOX	#1 CONT	0.90m
	16	TAXUS X MEDIA 'HICKSII' / HICKS YEW	#3 CONT	1m



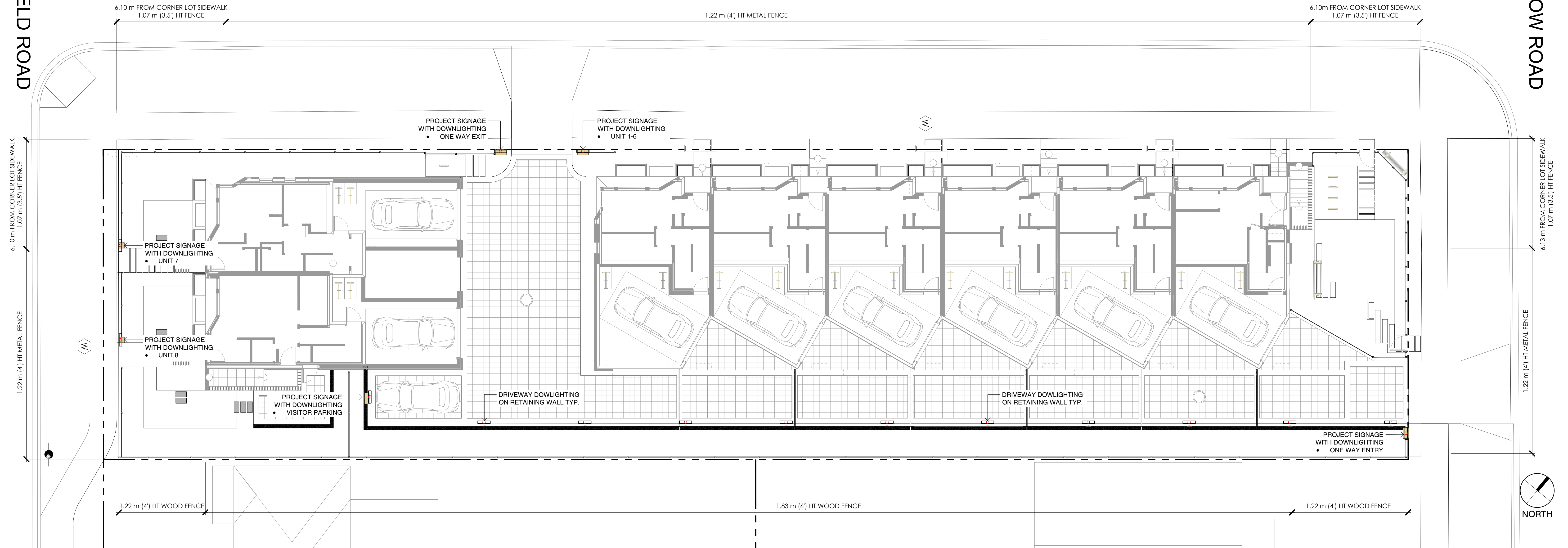
ELEVATION - DRIVE AISLE ARBOUR: NTS



FAIRFIELD ROAD

KIPLING STREET

THURLOW ROAD



FENCING CHARACTER IMAGE

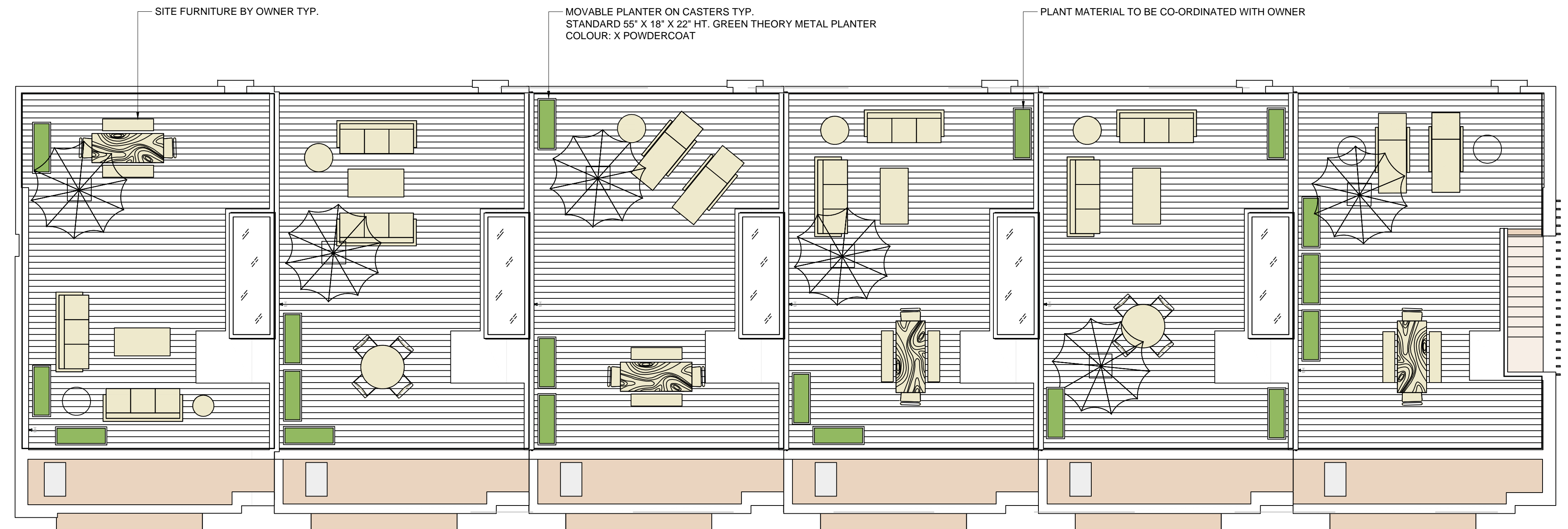
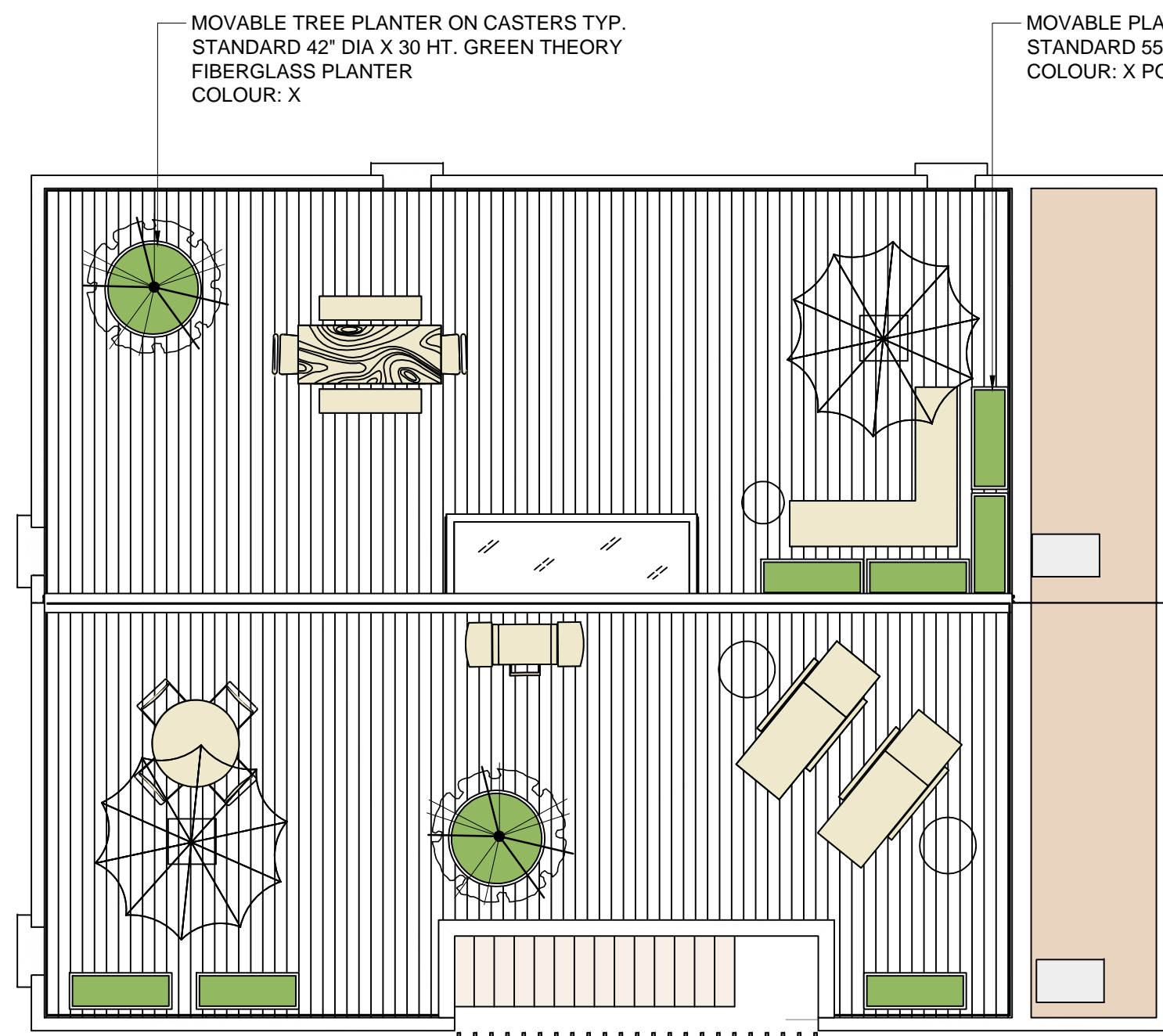


DOWNLIGHTING CHARACTER IMAGES

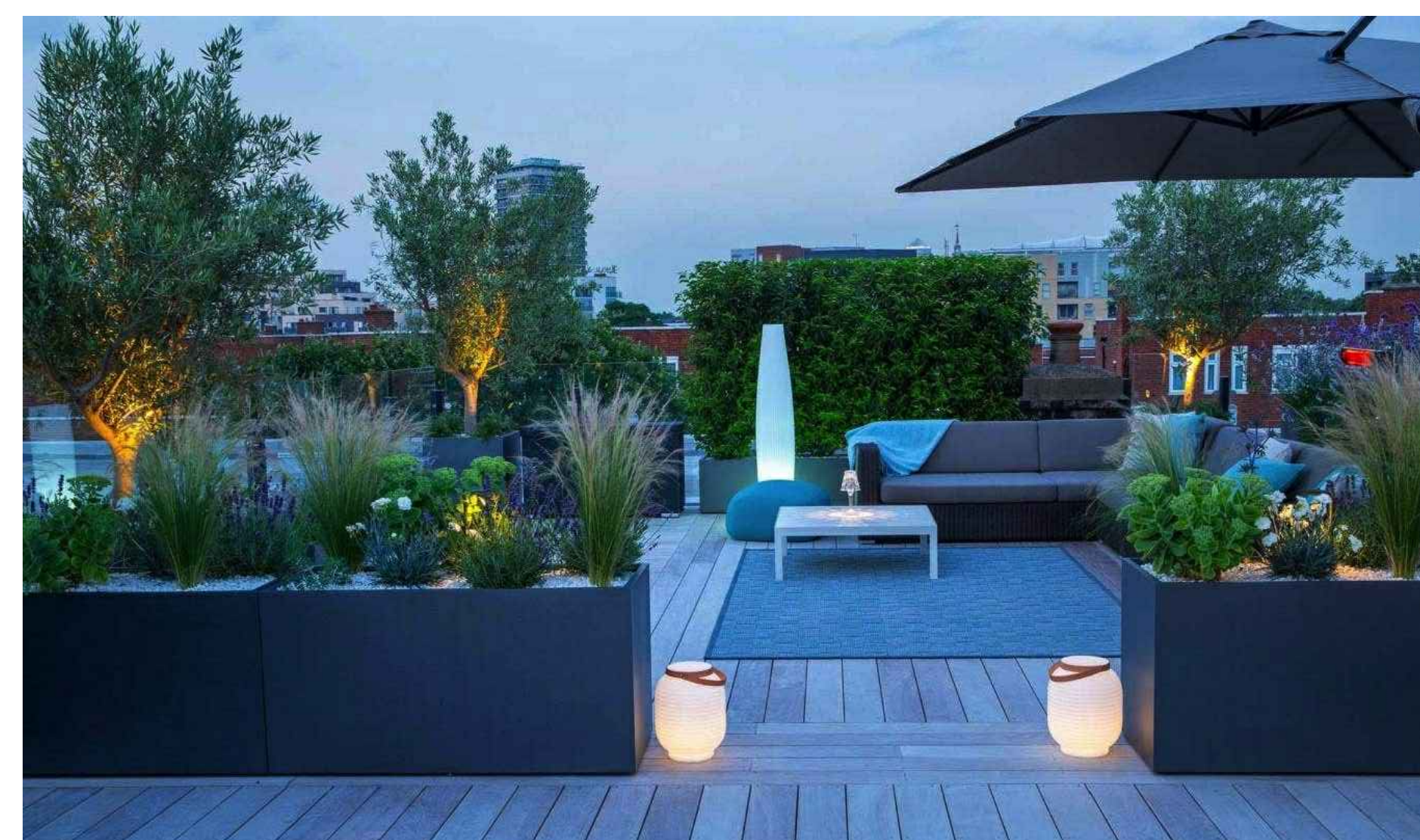


TRELLIS CHARACTER IMAGE AND DETAIL





ROOFTOP TREES IN PLANTERS



RECTANGULAR PLANTERS