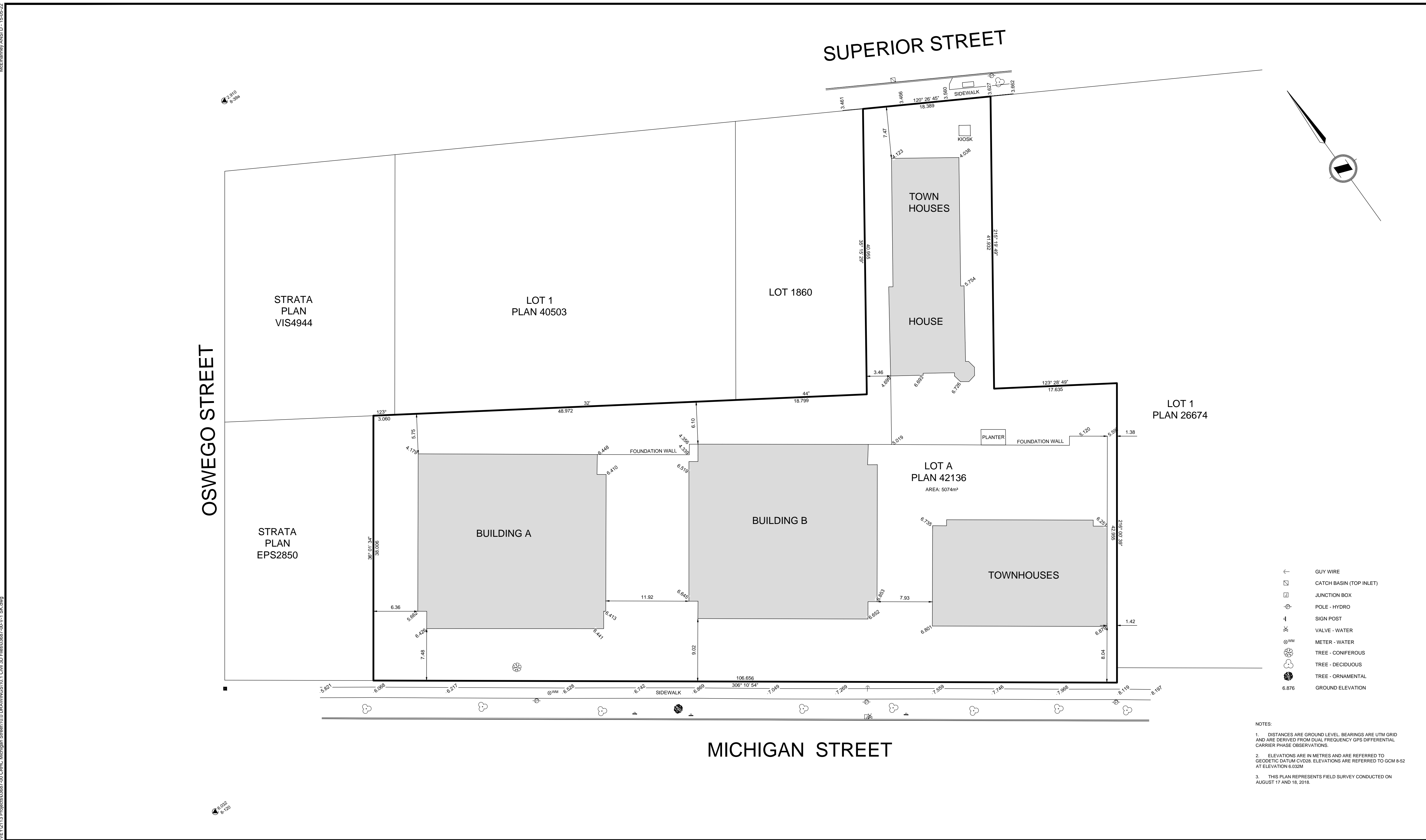


McElhanney ANS D - 15/05/23

DATE: 2023-05-15 10:43:00 FILE: P:\310-338 Michigan Street\103-DRAWINGS\103-D-CAD-FILES\2023-05-15_Site.dwg



- GUY WIRE
- ☐ CATCH BASIN (TOP INLET)
- ☐ JUNCTION BOX
- ⊕ POLE - HYDRO
- ⊕ SIGN POST
- ⊕ VALVE - WATER
- ⊕ METER - WATER
- ⊕ TREE - CONIFEROUS
- ⊕ TREE - DECIDUOUS
- ⊕ TREE - ORNAMENTAL
- 6.876 GROUND ELEVATION

NOTES:
 1. DISTANCES ARE GROUND LEVEL. BEARINGS ARE UTM GRID AND ARE DERIVED FROM DUAL FREQUENCY GPS DIFFERENTIAL CARRIER PHASE OBSERVATIONS.
 2. ELEVATIONS ARE IN METRES AND ARE REFERRED TO GEODETIC DATUM CH2008. ELEVATIONS ARE REFERRED TO GCM 8-52 AT ELEVATION 6.022M.
 3. THIS PLAN REPRESENTS FIELD SURVEY CONDUCTED ON AUGUST 17 AND 18, 2015.

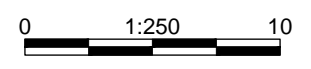
Rev	Date	Description
0	18-09-04	ORIGINAL ISSUE

MICHIGAN STREET

Rev	Date	Description	Surv	Drawn	App'd
0	18-09-04	ORIGINAL ISSUE	JC	LM/VE	GO

THIS DRAWING AND DESIGN IS THE PROPERTY OF McELHANNEY CONSULTING SERVICES LTD. (McELHANNEY) AND SHALL NOT BE USED, REPRODUCED OR REPRODUCED WITHOUT THE CONSENT OF McELHANNEY. McELHANNEY WILL NOT BE HELD RESPONSIBLE FOR THE IMPROPER OR UNAUTHORIZED USE OF THIS DRAWING AND DESIGN. THE DRAWING AND DESIGN HAS BEEN PREPARED FOR THE CLIENT IDENTIFIED TO MEET THE STANDARDS AND REQUIREMENTS OF THE APPLICABLE PUBLIC AGENCIES AT THE TIME OF PREPARATION. McELHANNEY, ITS EMPLOYEES, SUBCONTRACTORS AND AGENTS WILL NOT BE LIABLE FOR ANY LOSSES OR OTHER CONSEQUENCES RESULTING FROM THE USE OR RELIANCE UPON, OR ANY CHANGES MADE TO, THIS DRAWING, BY ANY THIRD PARTY, INCLUDING CONTRACTORS, SUPPLIERS, CONSULTANTS AND STANDARDS, OR THEIR EMPLOYEES OR AGENTS, WITHOUT McELHANNEY'S PRIOR WRITTEN CONSENT. INFORMATION ON EXISTING UNDERGROUND FACILITIES MAY NOT BE COMPLETE OR ACCURATE. McELHANNEY, ITS EMPLOYEES AND DIRECTORS ARE NOT RESPONSIBLE NOR LIABLE FOR THE LOCATION OF ANY UNDERGROUND CONCRETE, PIPES, CABLES OR OTHER FACILITIES WHETHER SHOWN OR OMITTED FROM THIS PLAN. PRIOR TO CONSTRUCTION CONTRACTOR SHALL EXPOSE LOCATIONS OF ALL EXISTING FACILITIES BY HAND DIGGING OR HYDROVAC AND ADVISE THE ENGINEER OF POTENTIAL CONFLICTS.

ORIGINAL DWG SIZE: ANSI D (22" x 34")
 ALL DIMENSIONS ARE IN METRES

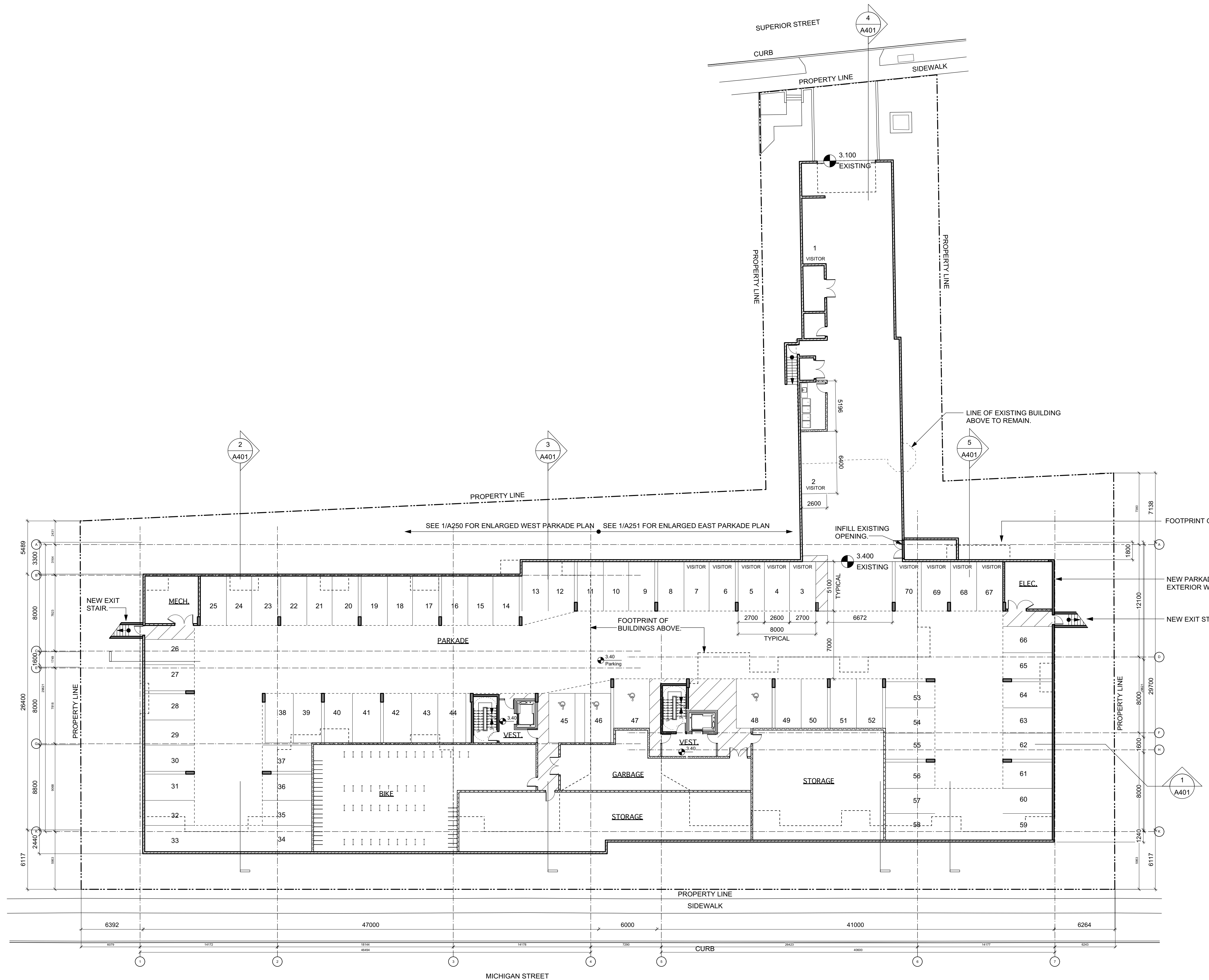


McElhanney
 McElhanney Consulting Services Ltd.
 Suite 500
 3960 Quadra Street
 Victoria BC
 Canada V8X 4A3
 Tel 250.370.9221

CAPITAL REGIONAL HOUSING CORP
 631 FISGARD STREET, PO BOX 1000, VICTORIA BC
330-336 MICHIGAN STREET
SITE PLAN
 330-336 MICHIGAN STREET AND 333 SUPERIOR STREET
 VICTORIA BC

Drawing No. **03687-V-1**
 Project Number 2113-03687-00
 Rev. 0

de Hoog & Kierulff architects
 VICTORIA OFFICE
 977 Fort Street
 Victoria BC V8V 3K3
 T 1-250-858-3387
 NANAIMO OFFICE
 102-5190 Dublin Way
 Nanaimo BC V9T 2K6
 T 1-250-885-5810
 Michigan St
 310-338 Michigan St. & 333 Superior St.
 Victoria BC
 Survey
 A002



VEHICLE PARKING CALCULATION

UNITS < 45 SM	7 X 2 = 1
UNITS 45-70 SM	76 X 5 = 38
UNITS > 70 SM	23 X 75 = 17
VISITOR	106 X 1 = 11
TOTAL REQUIRED	67
PROVIDED	70

LONG TERM BIKE PARKING CALCULATION

UNITS < 45 SM	5 X 1 = 5
UNITS > 45 SM	101 X 1.25 = 126
TOTAL REQUIRED	131
PROVIDED	131

Rev	Date	Description
1	NOV 2019	1815 A200 Floor Plans view
2	MAF, FWP	checked by RAW
3	AS SHOWN	project number 1815

NOTE: All dimensions are shown in millimeters.

dHKarchitects

VICTORIA OFFICE
977 Fort Street
Victoria BC V8V 3K3
T 1-250-858-3387

NANAIMO OFFICE
102-5190 Dublin Way
Nanaimo BC V9T 2K6
T 1-250-858-5810

project name
Michigan St
310-338 Michigan St. & 333 Superior St.
Victoria BC

Parkade Plan

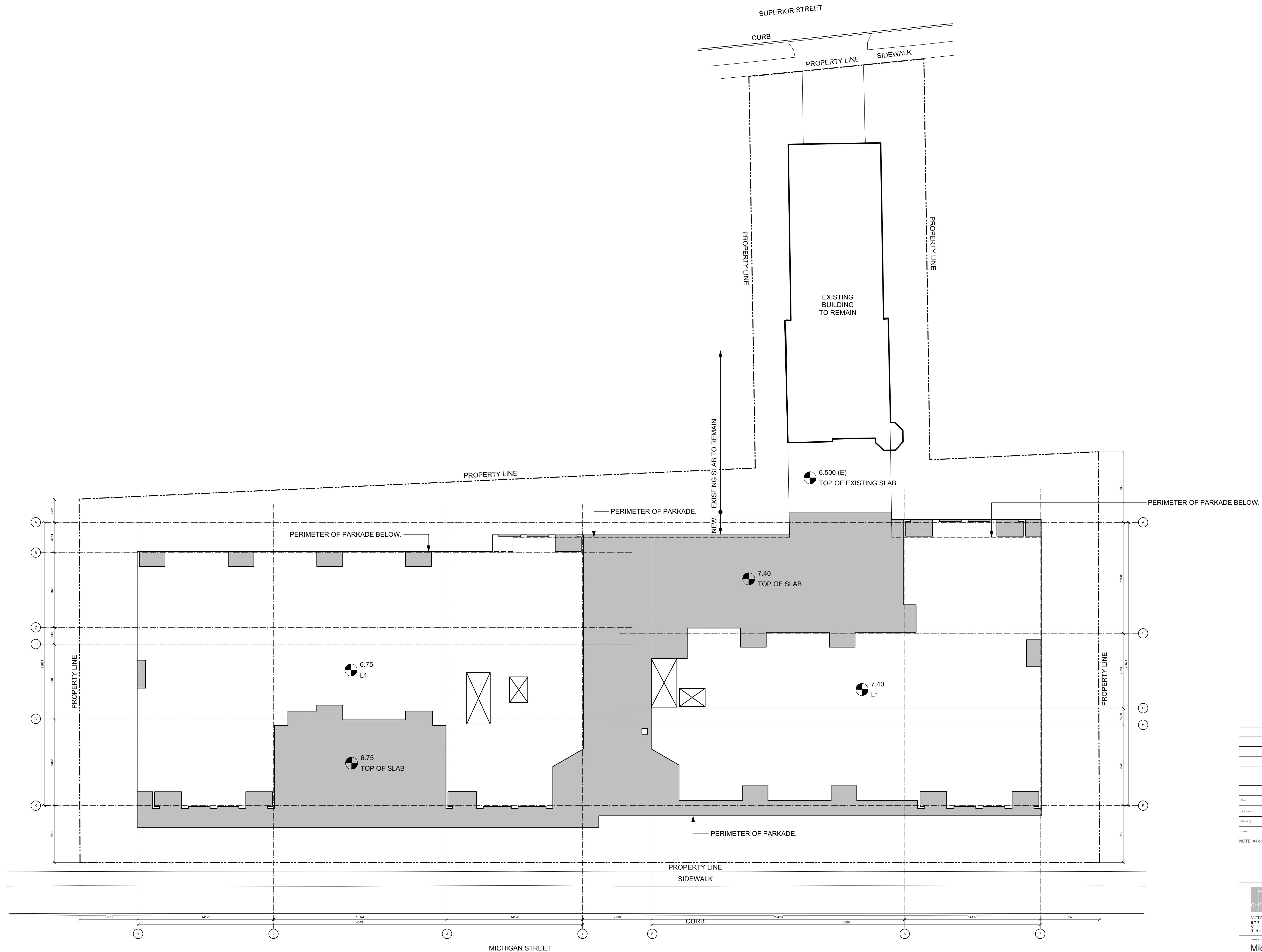
sheet no. **A101**

1 A101 Parkade Scale: 1:200

0 5000 10000 mm

1:200

N



Rev	Date	Description
1	NOV 2019	1815 A200 Floor Plans - view
2	MAF, FWP	checked by RAW
3	AS SHOWN	project number 1815

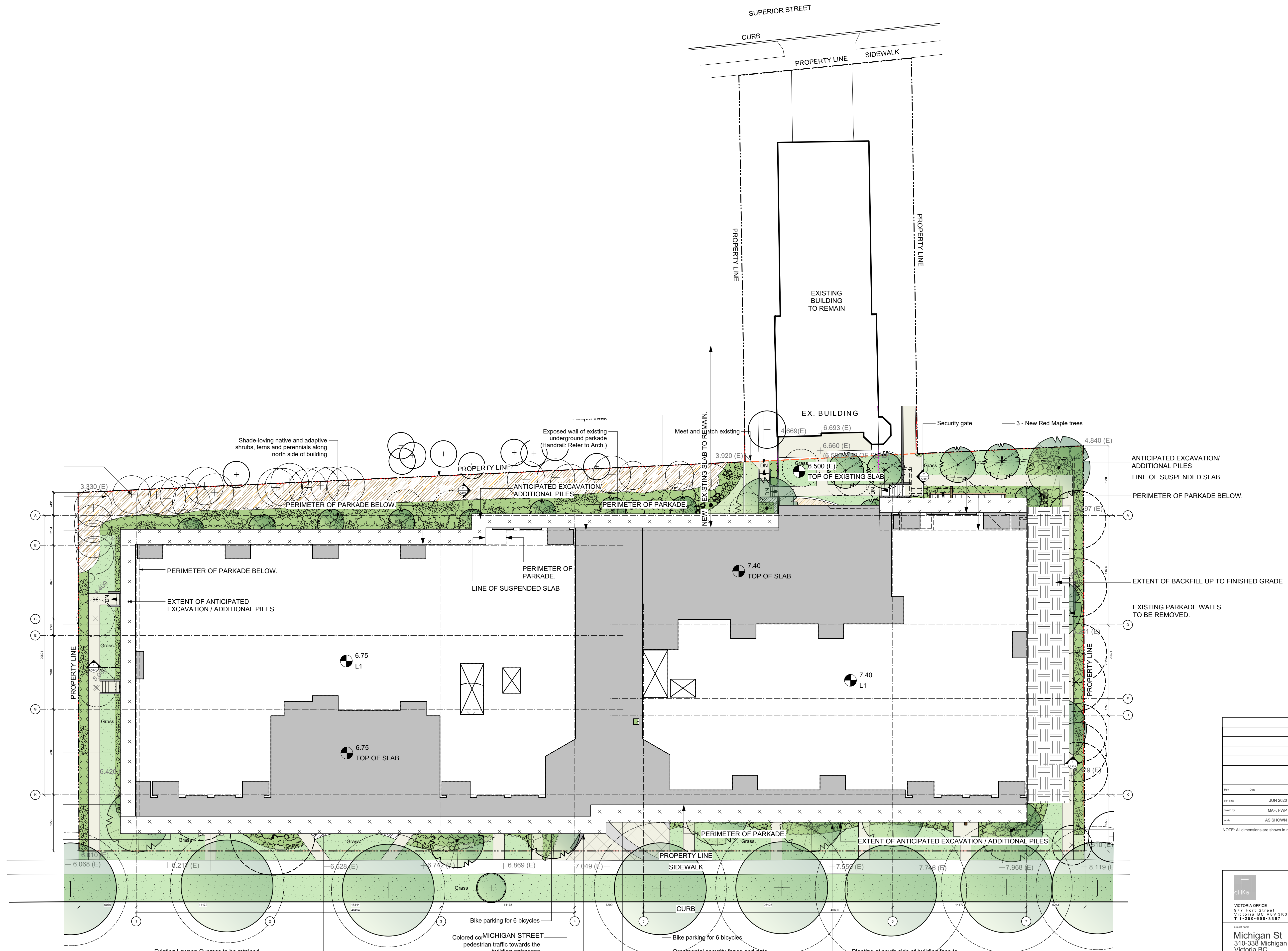
NOTE: All dimensions are shown in millimeters.

VICTORIA OFFICE 977 Fort Street VICTORIA BC V8V 3K3 T 1-250-858-3387	NANAIMO OFFICE 102-5190 Dublin Way Nanaimo BC V9T 2K6 T 1-250-855-5810
Michigan St 310-338 Michigan St. & 333 Superior St. Victoria BC	
Suspended Slab Plan	
project name A102	drawing no. -

1
A102

Suspended Slab Plan
Scale: 1:200

0 5000 10000 mm
1:200



ANTICIPATED EXCAVATION/
ADDITIONAL PILES
LINE OF SUSPENDED SLAB
PERIMETER OF PARKADE BELOW.
EXTENT OF BACKFILL UP TO FINISHED GRADE
EXISTING PARKADE WALLS
TO BE REMOVED.

Rev	Date	Description
1	JUN 2020	1815 A200 Floor Plans view
2	MAF, FWP	RAW
3	AS SHOWN	1815

NOTE: All dimensions are shown in millimeters.

dHkarchitects

VICTORIA OFFICE
977 Fort Street
VICTORIA BC V8W 2K3
T 1-250-858-3387

NANAIMO OFFICE
102-5190 Dublin Way
NANAIMO BC V9T 2K6
T 1-250-858-5810

Michigan St
310-338 Michigan St. & 333 Superior St.
Victoria BC

Preliminary Excavation Plan

Project Name: Michigan St
Drawing No: A103

1
A103
Suspended Slab Plan
Scale: 1:200

0 5000 10000 mm
1:200

N



BUILDING 1 (WEST) UNIT COMPOSITION

UNIT/LEVEL	L1	L2-L3	L4	TOTAL
STUDIO	3	0	0	3
ONE BED	3	12	5	20
TWO BED	5	12	7	24
THREE BED	1	4	1	6
TOTAL	12	28	13	53

* INCLUDES 3 HANDICAPPED ACCESSIBLE UNITS

BUILDING 2 (EAST) UNIT COMPOSITION

UNIT/LEVEL	L1	L2-L4	TOTAL
STUDIO	1	3	4
ONE BED	4	9	13
TWO BED	5	18	23
THREE BED	1	3	4
TOTAL	11	33	44

* INCLUDES 4 HANDICAPPED ACCESSIBLE UNITS

Rev	Date	Description
01	NOV 2019	1815 A200 Floor Plans - view
02	MAF, FWP	checked by RAW
03	AS SHOWN	project number 1815

NOTE: All dimensions are shown in millimeters.

dHk Architects

VICTORIA OFFICE
977 Fort Street
VICTORIA BC V8V 3K3
T 1-250-858-3387

dHKarchitects

NANAIMO OFFICE
102-5190 Dublin Way
NANAIMO BC V9T 2K6
T 1-250-585-5810

project name
Michigan St
310-338 Michigan St. & 333 Superior St.
Victoria BC

L1 Plan

Copyright reserved. These plans and designs are not to be used, copied, reproduced, or otherwise disseminated without the written consent of dHk Architects.

sheet no. **A202**

1
A202

L1 - Main Floor
Scale: 1:200

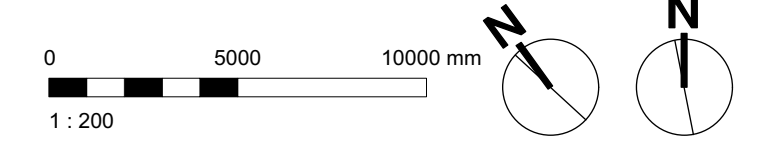
0 5000 10000 mm

1:200

N



1 L2 - L3 Floors
A203 Scale: 1:200



Rev	Date	Description
1	NOV 2019	1815 A200 Floor Plans.view
2	MAF, FWP	checked by RAW
3	AS SHOWN	project number 1815

NOTE: All dimensions are shown in millimeters.

dHkA dHKarchitects

VICTORIA OFFICE
977 Fort Street
VICTORIA BC V8V 3K3
T 1-250-858-3387

NANAIMO OFFICE
102-5190 Dublin Way
NANAIMO BC V9T 2K6
T 1-250-585-5810

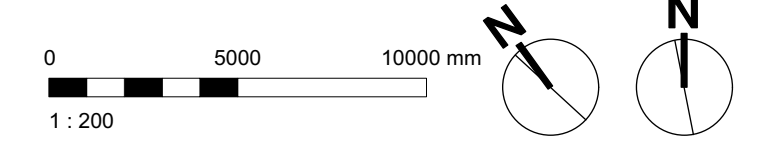
project name
Michigan St
310-338 Michigan St. & 333 Superior St.
Victoria BC

L2 - L3 Plans

sheet no. **A203**



1 L2 - L4 Floors
A204 Scale: 1:200



Rev	Date	Description
1	NOV 2019	1815 A200 Floor Plans.vrx
2	MAF, FWP	checked by RAW
3	AS SHOWN	project number 1815

NOTE: All dimensions are shown in millimeters.

dHka

VICTORIA OFFICE
977 Fort Street
Victoria BC V8V 3K3
T 1-250-858-3387

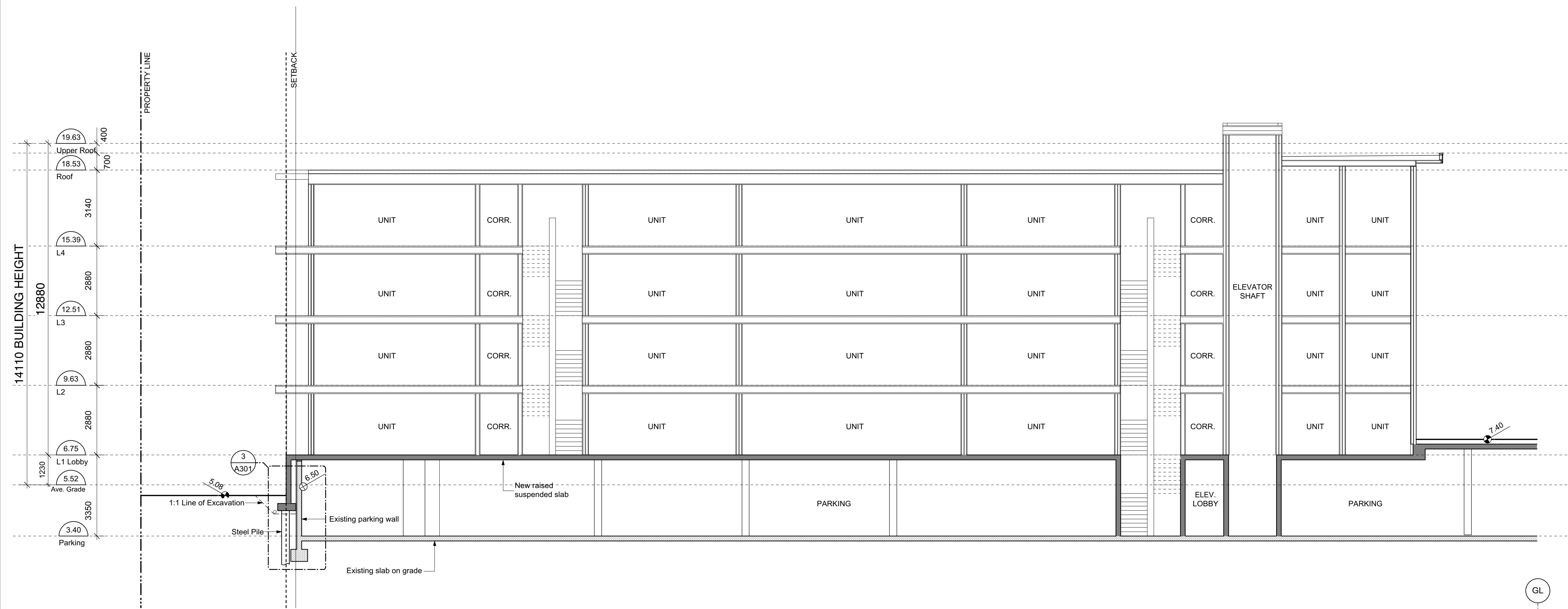
dHKarchitects

NANAIMO OFFICE
102-5190 Dublin Way
Nanaimo BC V9T 2K6
T 1-250-585-5810

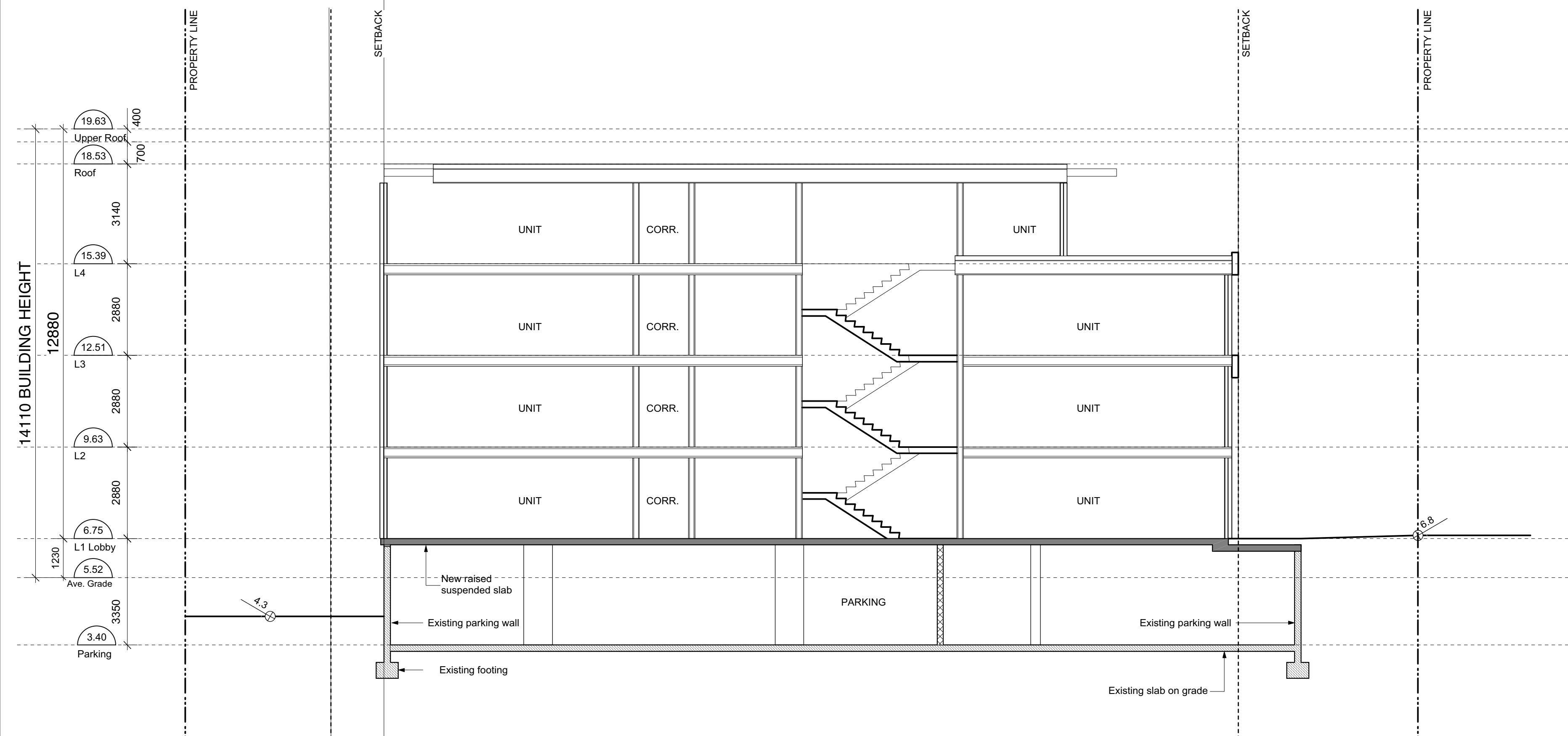
project name
Michigan St
310-338 Michigan St. & 333 Superior St.
Victoria BC

L4 Plan

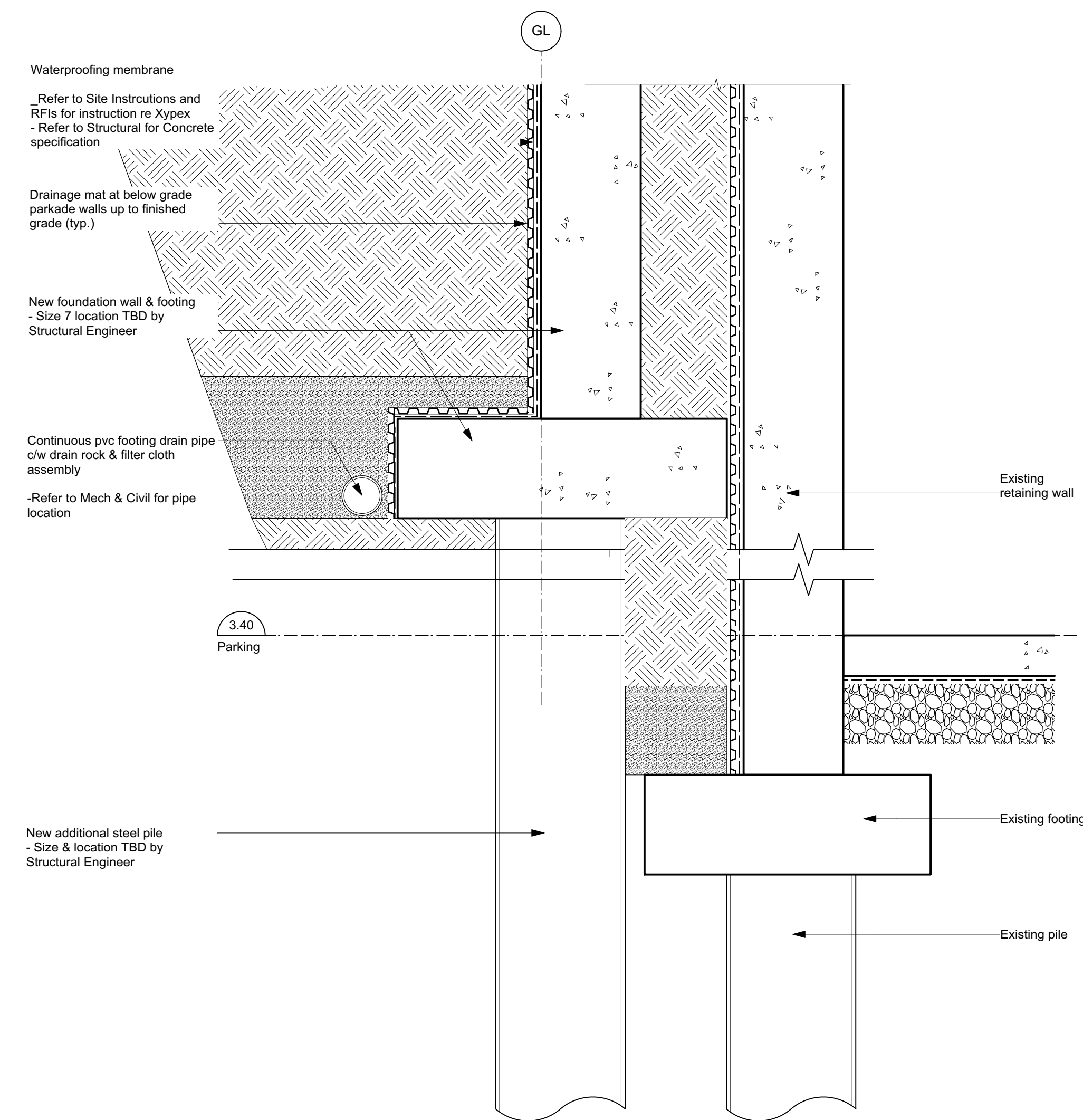
A204	-
------	---



1 Section 1 - West Building
Scale: 1:100



2 Section 2 - West Building
Scale: 1:100



3 Cross Section
Scale: 1:10

Date	Description
JUN 2020	1815 A300 Sections.vwk
MAF	RAW
AS SHOWN	1815

NOTE: All dimensions are shown in millimeters.

dHKarchitects

VICTORIA OFFICE
977 Fort Street
Victoria BC V8V 3K3
T 1-250-658-3367

NANAIMO OFFICE
102-5190 Durbin Way
Nanaimo BC V9T 2W6
T 1-250-585-5810

Michigan St
310-338 Michigan St. & 333 Superior St.
Victoria BC

Sections - West Building

Project No: A301

Recommended Nursery Stock

Trees

Total:	Botanical Name	Common Name	Size
38	Acer circinatum	Vine Maple	6cm cal., 3 stem
	Acer rubrum 'Karpick'	Karpick Maple	6cm cal.
	Acer rubrum 'October Glory'	October Glory Red Maple	6cm cal.
	Malus fusca	Pacific Crabapple	6cm cal.
	Stewartia pseudocamellia	Japanese Stewartia	6cm cal.

Medium Shrubs

Total:	Botanical Name	Common Name	Size
207	Choisya ternata	Mexican Orange Blossom	# 7 pot
	Mahonia aquifolium	Tall Oregon Grape	# 5 pot
	Vaccinium ovatum	Evergreen Huckleberry	# 1 pot

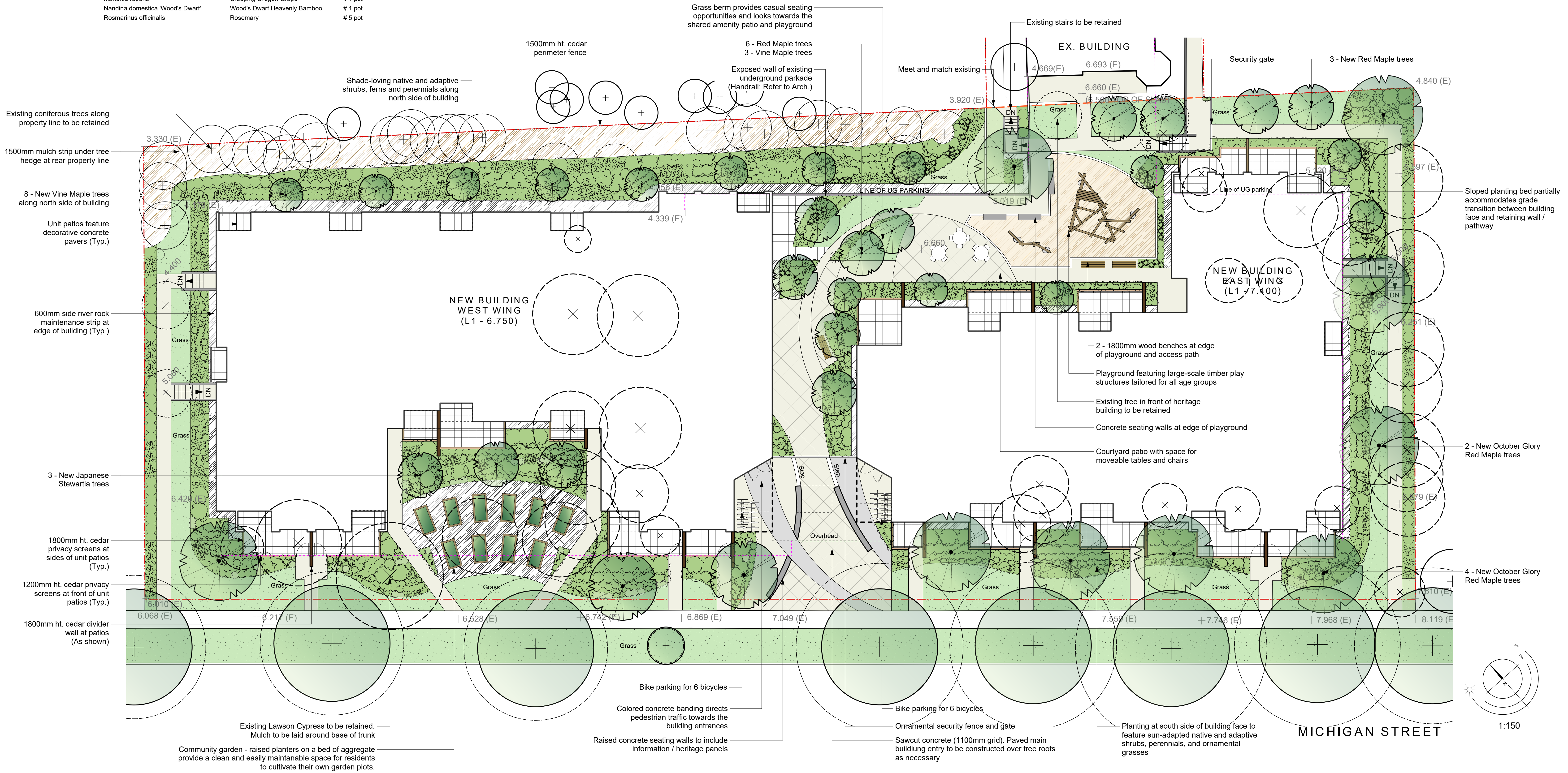
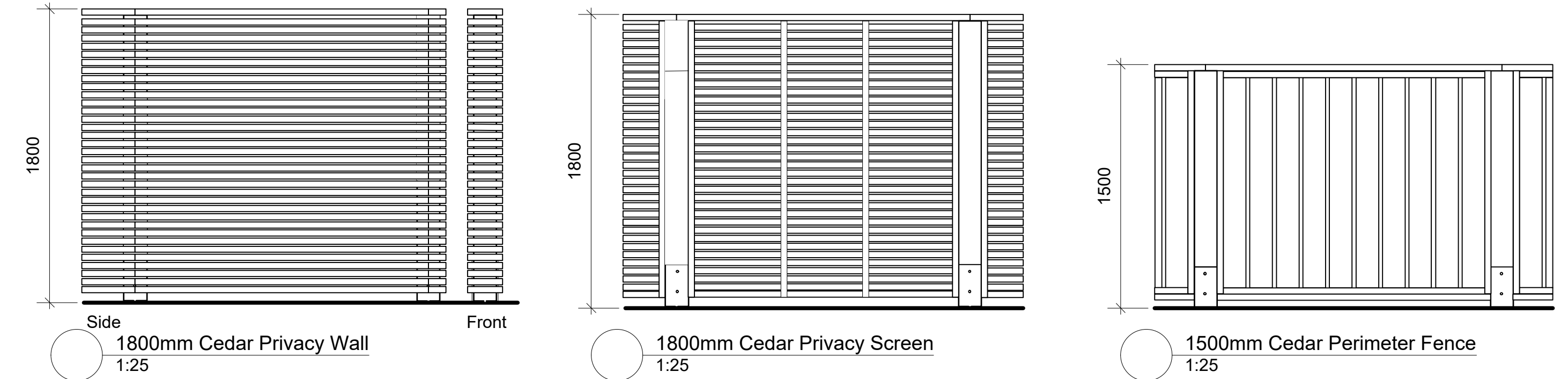
Small Shrubs

Total:	Botanical Name	Common Name	Size
1118	Gaultheria shallon	Salal	# 1 pot
	Lavandula officinalis	English Lavender	# 5 pot
	Mahonia nervosa	Low Oregon Grape	# 1 pot
	Mahonia repens	Creeping Oregon Grape	# 1 pot
	Nandina domestica 'Wood's Dwarf'	Wood's Dwarf Heavenly Bamboo	# 1 pot
	Rosmarinus officinalis	Rosemary	# 5 pot

Perennials, Annuals and Ferns

Total:	Botanical Name	Common Name	Size
674	Achillea millefolium	Common Yarrow	# 1 pot
	Crococsmia 'Babylon'	Babylon Montbretia	# 3 pot
	Echinacea purpurea	Purple Coneflower	# 1 pot
	Helictotrichon sempervirens	Blue Oat Grass	# 1 pot
	Leucanthemum x 'Becky'	Becky Shasta Daisy	# 1 pot
	Perovskia atriplicifolia	Russian Sage	# 1 pot
	Polystichum munitum	Sword Fern	# 3 pot

- Notes:**
 1. All work to be completed to current BC SLA Landscape Standards
 2. All soft landscape to be irrigated with an automatic irrigation system



310-338 Michigan St. | Landscape Concept Plan

Tree Legend:

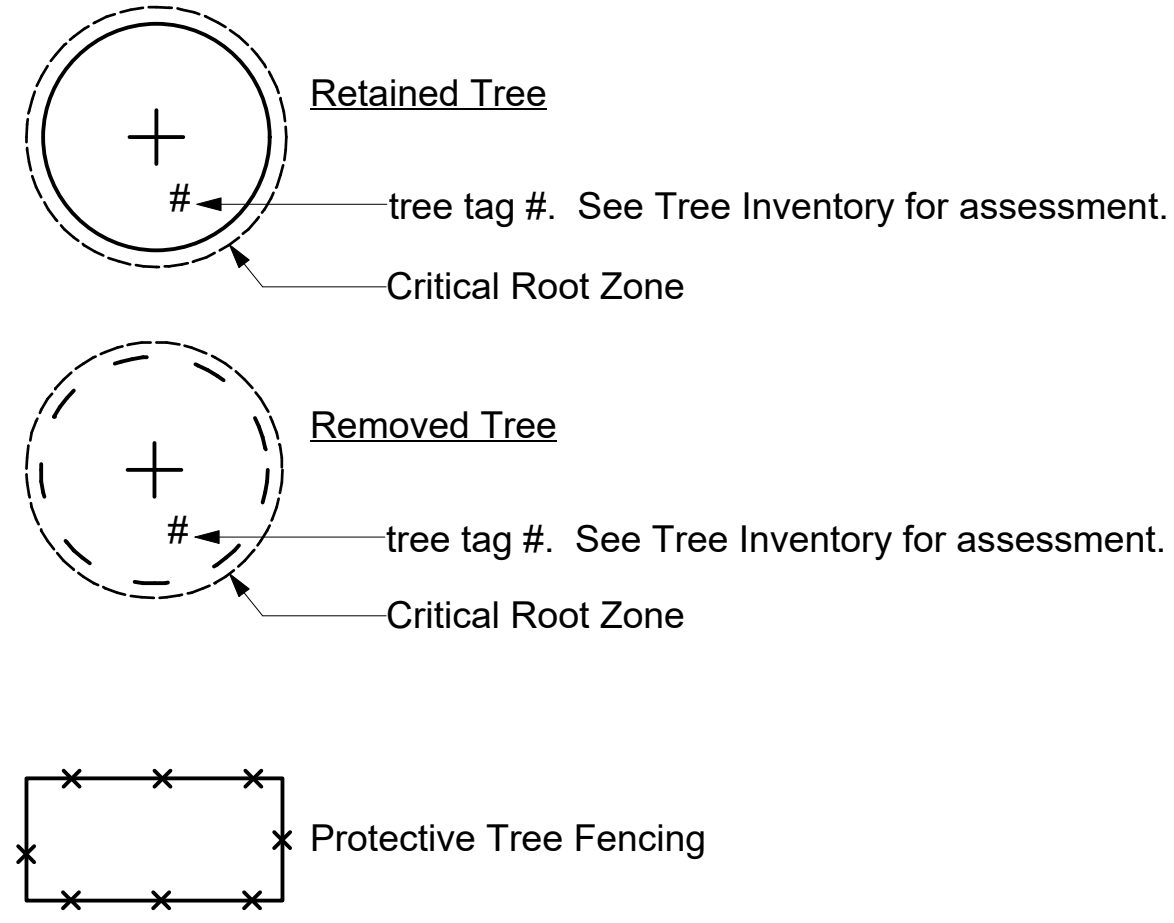


Table 1. Inventory of existing trees, Michigan Square - 330 Michigan Street, Victoria, BC (DTS 03.25.19)

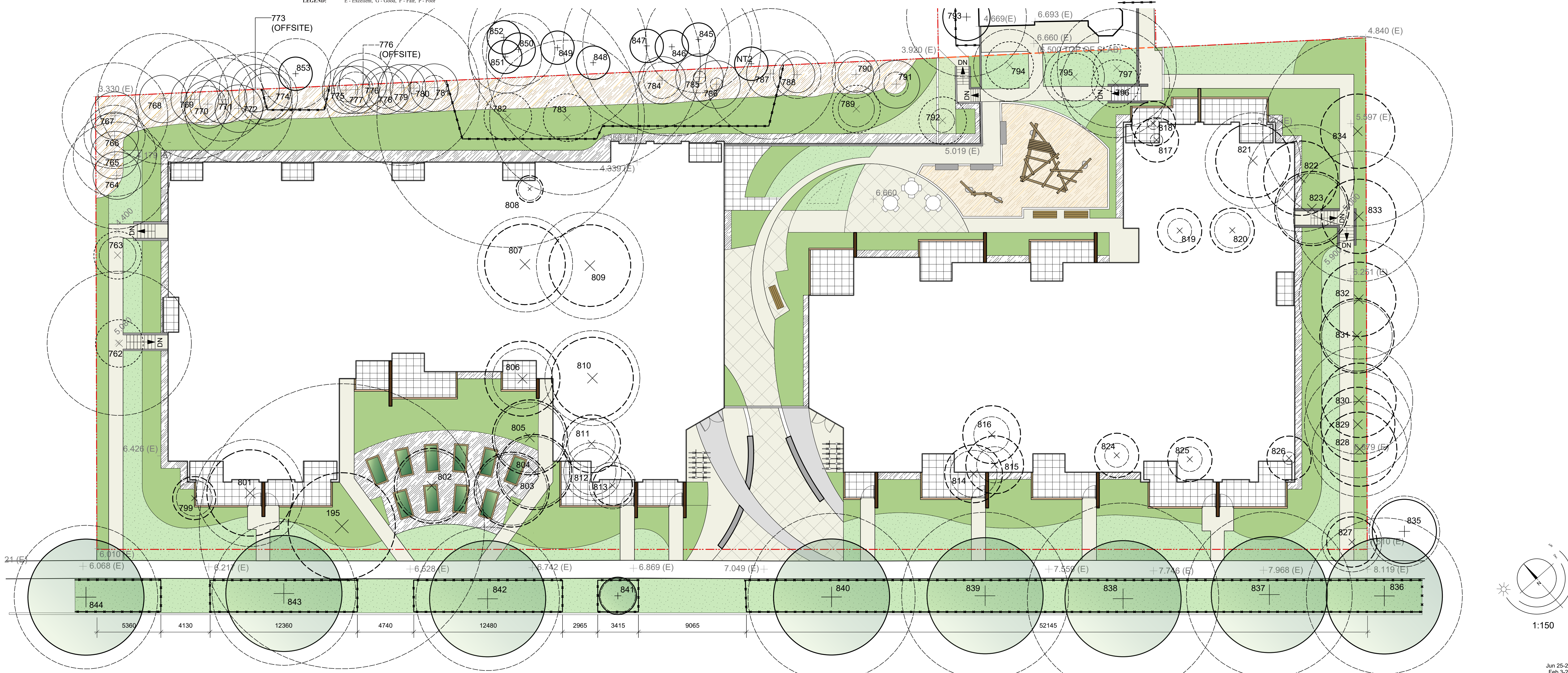
Tree No.	Species	DBH (cm.)	Health	Canopy	Roots	Other	Comments
762	Douglas fir, <i>Pseudotsuga menziesii</i> (Pm)	39	G	G	G		- soil at property line was excavated for neighboring building several years ago. Tree is approx. 2 m away
763	Norway maple, <i>Acer platanoides</i> (Ap)	13	G	G	G		- soil at property line was excavated for neighboring building several years ago. Tree is approx. 2 m away
764	Hemlock, <i>Tsuga heterophylla</i> (Th)	31	G	G	G		- soil at property line was excavated for neighboring building several years ago. Tree is approx. 2 m away
765	Th	23	F	F	F		- soil at property line was excavated for neighboring building several years ago. Tree is approx. 2 m away - cankers have developed with exuding resin from old branch collars in lower trunk
766	Th	16	F	F	F		- soil at property line was excavated for neighboring building several years ago. Tree is approx. 2 m away - tree is heavily suppressed
767	Th	28	G	G	G		- cankers on old branch collars in lower trunk - soil at property line was excavated for neighboring building several years ago. Tree is approx. 2 m away - cankers on old branch collars in lower trunk
768	Lawson cypress, <i>Chamaecyparis lawsoniana</i> (Cl)	35	G	G	G		- within 1 m of property line
769	Cl	34	G	G	G		- tree is dead
770	Plum, <i>Prunus spp.</i>	12	-	-	-		- suppressed and 1 m from property line
771	Cl	22	F	F	F		- within 2 m of property line
772	Th	29	G	G	G		- at property line
773	Hawthorne, <i>Crataegus spp.</i>	28	F	F	F		- 70% enveloped by Ivy

Table 1. continued

Tree No.	Species	DBH (cm.)	Health	Canopy	Roots	Other	Comments
774	Th	15	F	F	F		- 1 m from property line
775	Japanese maple, <i>Acer palmatum</i> (Apal)	4,4,4,5	F	F	F		- suppressed - planted together with ID No. 776 - 0.5 m from property line
776	Apal	7,6	F	F	F		- 5 cm stem died back to 1.5m in height - planted together with ID No. 775 - 0.5 m from property line
777	Ap	21	G	G	G		- suppressed - at property line - wire fencing girdling entire circumference at approximately 2 m high
778	Th	10	F	F	F		- suppressed and growing through canopy of tree ID No. 779 - 0.5 m from property line
779	Plum, <i>Prunus spp.</i>	53	G	G	G		- 30 cm. from property line
780	Th	4	P	P	P		- heavily suppressed by tree ID No. 779 - 0.5 m from property line
781	Th	5	F	F	F		- heavily suppressed by tree ID No. 779 - 0.5 m from property line
782	Western red cedar, <i>Thuja plicata</i> (Tp)	55,31	G	G	G		- north side suppressed by neighbour's D.fir
783	Cl	42	P	P	P		- cavity at ground level extending up 60 cm showing extensive decay - top is very weak, 2 co-dominant tops have died - dieback 20%

Tree No.	Species	DBH (cm.)	Health	Canopy	Roots	Other	Comments
784	Th	11	F	F	F		- 1 m from property line
785	Unknown spp. (wait for leaf flush to identify)	4	P	P	P		- heavily suppressed by neighbours' trees - 0.5 m from property line
786	Unknown spp. (wait for leaf flush to identify)	4, 2	F	F	F		- heavily suppressed by neighbours' trees - 1.5 m from property line
787	Pm	38	F	F	F		- heavily suppressed by neighbours' trees - 0.5 m from property line
788	Weeping birch, <i>Betula spp.</i> (Bs)	14	F	F	F		- asymmetrical, previously suppressed
789	Bs	10	F	F	F		- malpruned
790	Bs	14	F	F	F		- DBH taken just below graft union; - malpruned
791	Locust, <i>Robinia spp.</i> (Rs)	11	G	F	G		- 1 m from property line - union between 2 main stems at 3 m high has included bark
792	Rs	9	F	F	F		
793	Pine, <i>Pinus spp.</i>	51	G	G	G		- 0.5 m from Superior Street building and 2.5 m from retaining wall lowering grade to neighbours.
794	Apal	22	F	F	F		- diameter at breast height taken below co-dominant stems; 20% dieback
795	Magnolia, <i>Magnolia spp.</i>	14, 14	G	G	G		- asymmetrical
796	Hornbeam, <i>Carpinus betulus</i> (Cb)	37	G	G	G		- DBH taken below lowest co-dominant stems - limited root zone, planted in concrete planters - planted with tree ID No. 797
797	Cb	43	G	G	G		- DBH taken below lowest co-dominant stems

LEGEND: E - Excellent, G - Good, F - Fair, P - Poor



310-338 Michigan St. | Tree Preservation Plan

Jun 25-20
 Feb 3-20
 Jun 12-19
 May 30-19

