

**PREPARED FOR:**

Reliance Properties  
305 - 111 Water St  
Vancouver, BC V6B 1A7  
Tel (604) 694-8681  
Fax (604) 683-6719

**THE GUILD**  
**1244-50 WHARF ST**  
**VICTORIA, BC**

**FIRST FLOOR**  
(As Measured: April 2017)

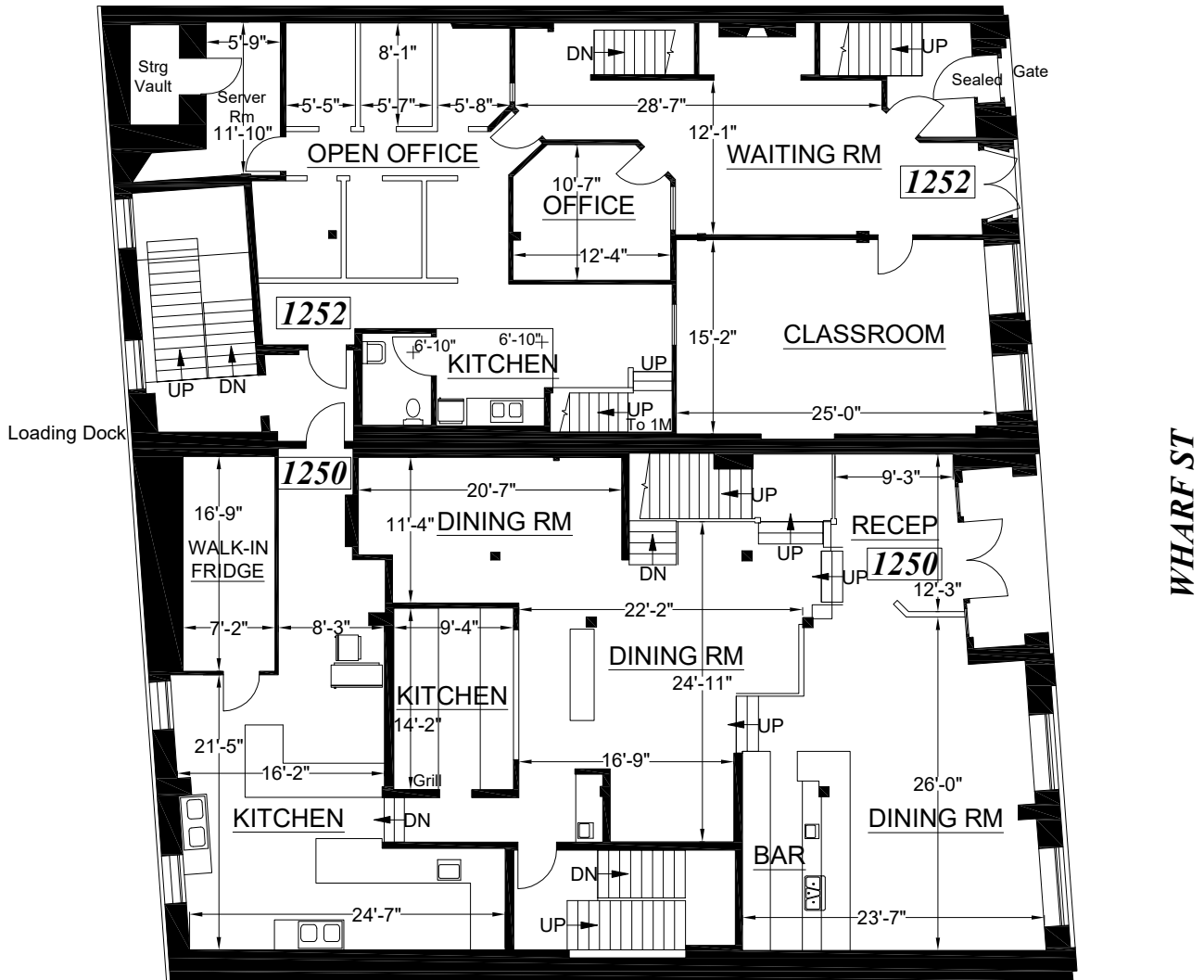
**FLOOR PLAN**

<http://www.relianceproperties.ca>

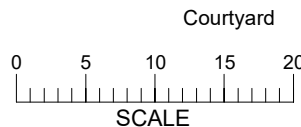
\*Measured Area: 5,378 s.f.



**YATES ST**



Billing Summary	SQ.FT.
Measured Area:	26,961
Exterior Area:	1,411



**Note:** All dimensions shown are rounded to the nearest inch, for informational purposes only. All measurements are recorded to 1/8" accuracy as documented in the final CAD drawing supplied.

\*Measured Area represents the footprint of the floor, and is used solely for billing purposes. It is NOT to be used for leasing purposes.

Survey Accuracy: +/- 0.14 %

LASERTECH® is a registered US trademark of Lasertech® Floorplans Ltd. Copyright 1998 Lasertech® Floorplans Ltd., All Rights Reserved



TEL: (888) 393-6655  
FILE: 17-179

**PREPARED FOR:**

Reliance Properties  
 305 - 111 Water St  
 Vancouver, BC V6B 1A7  
 Tel (604) 694-8681  
 Fax (604) 683-6719

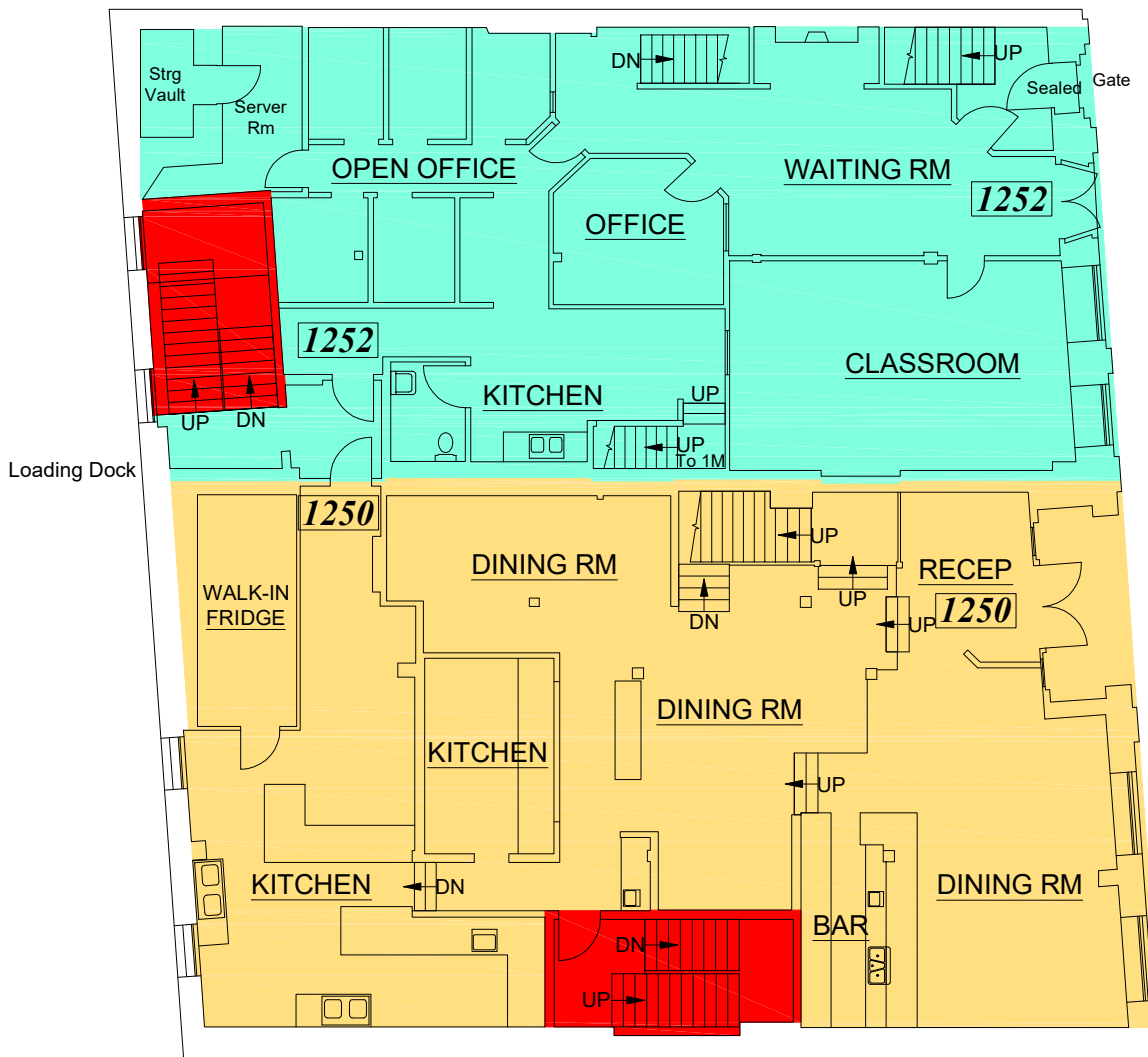
**THE GUILD**  
**1244-50 WHARF ST**  
**VICTORIA, BC**

**LEASE PLAN**

**FIRST FLOOR**  
 (As Measured: April 2017)  
 (Last Updated: May 2017)

<http://www.relianceproperties.ca>

**YATES ST**



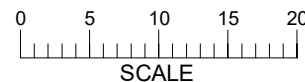
Public Pedestrian Thoroughfare  
**WHARF ST**

BUILDING SUMMARY	SQ.FT.
Gross Building Area	26,961
Total Rentable	22,211
Total Usable	20,767
Total Floor Common	292
Total Building Common	1,152
Total Vertical	1,944

FLOOR SUMMARY	SQ.FT.
Total Rentable	5,080
Total Usable	4,807
Combined R/U	1.0568
Floor Common	0
Building Common	0
Total Vertical	309

Courtyard

Suite #	Usable	Rentable	% of Tot. R.
1250	2,568.9	2,714.8	12.2
1252	2,119.4	2,239.8	10.1
1252-MEZZ	118.4	125.1	0.6



AREAS COMPUTED IN ACCORDANCE WITH  
 ANSI/BOMA (Z65.1) 1996 OFFICE STANDARD

LASERTECH® is a registered US trademark of Lasertech® Floorplans Ltd.  
 Copyright 1998 Lasertech® Floorplans Ltd., All Rights Reserved

Survey Accuracy: +/- 0.14 %

TEL: (888) 393-6655  
 FILE: 17-179

**PREPARED FOR:**

Reliance Properties  
305 - 111 Water St  
Vancouver, BC V6B 1A7  
Tel (604) 694-8681  
Fax (604) 683-6719

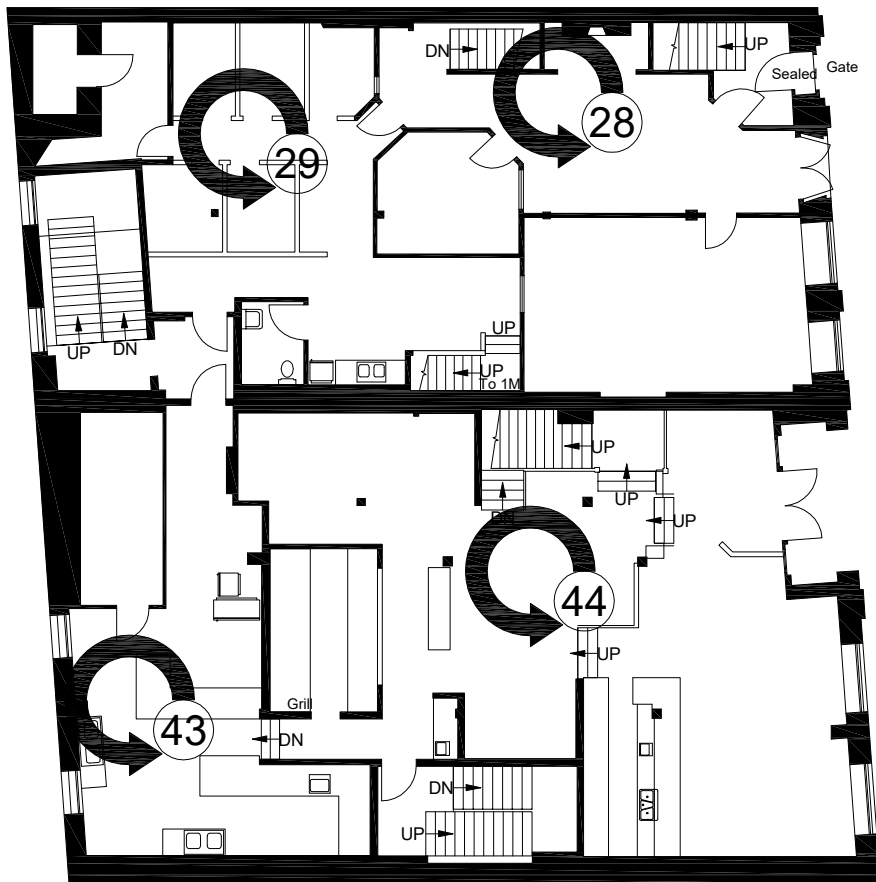
**THE GUILD**  
**1244-50 WHARF ST**  
**VICTORIA, BC**

**FIRST FLOOR**  
(As Measured: April 2017)

<http://www.relianceproperties.ca>

**PHOTO KEYMAP**

*YATES ST*



*WHARF ST*



**PREPARED FOR:**

Reliance Properties  
305 - 111 Water St  
Vancouver, BC V6B 1A7  
Tel (604) 694-8681  
Fax (604) 683-6719

**THE GUILD**  
**1244-50 WHARF ST**  
**VICTORIA, BC**

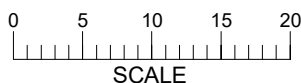
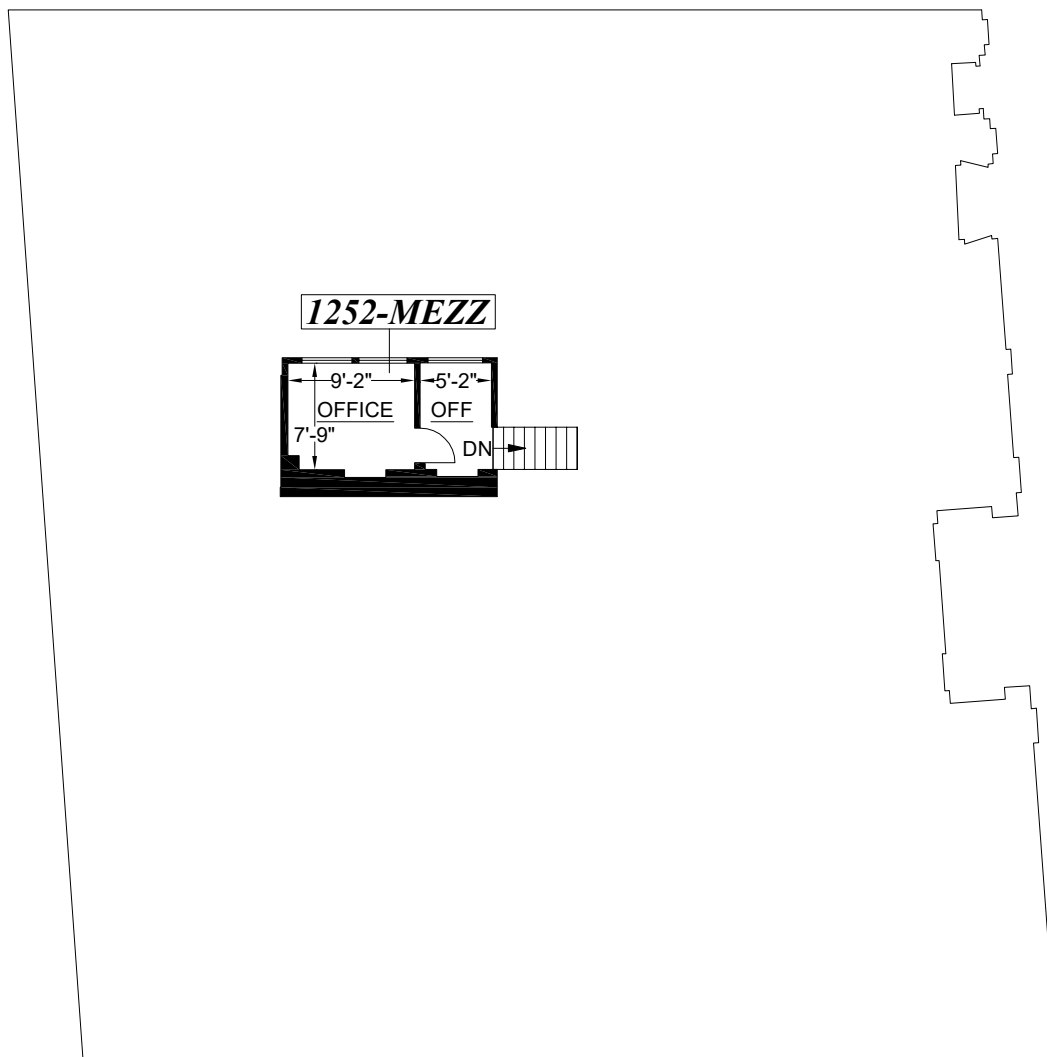
**MEZZANINE**  
(As Measured: April 2017)

<http://www.relianceproperties.ca>

**FLOOR PLAN**



*\*Measured Area: 157 s.f.*



*\*Measured Area represents the footprint of the floor, and is used solely for billing purposes. It is NOT to be used for leasing purposes.*

**Note:** All dimensions shown are rounded to the nearest inch, for informational purposes only. All measurements are recorded to 1/8" accuracy as documented in the final CAD drawing supplied.

**Survey Accuracy: +/- 0.15 %**

**LASERTECH®** is a registered US trademark of Lasertech® Floorplans Ltd. Copyright 1998 Lasertech® Floorplans Ltd., All Rights Reserved



TEL: (888) 393-6655  
FILE: 17-179

**PREPARED FOR:**

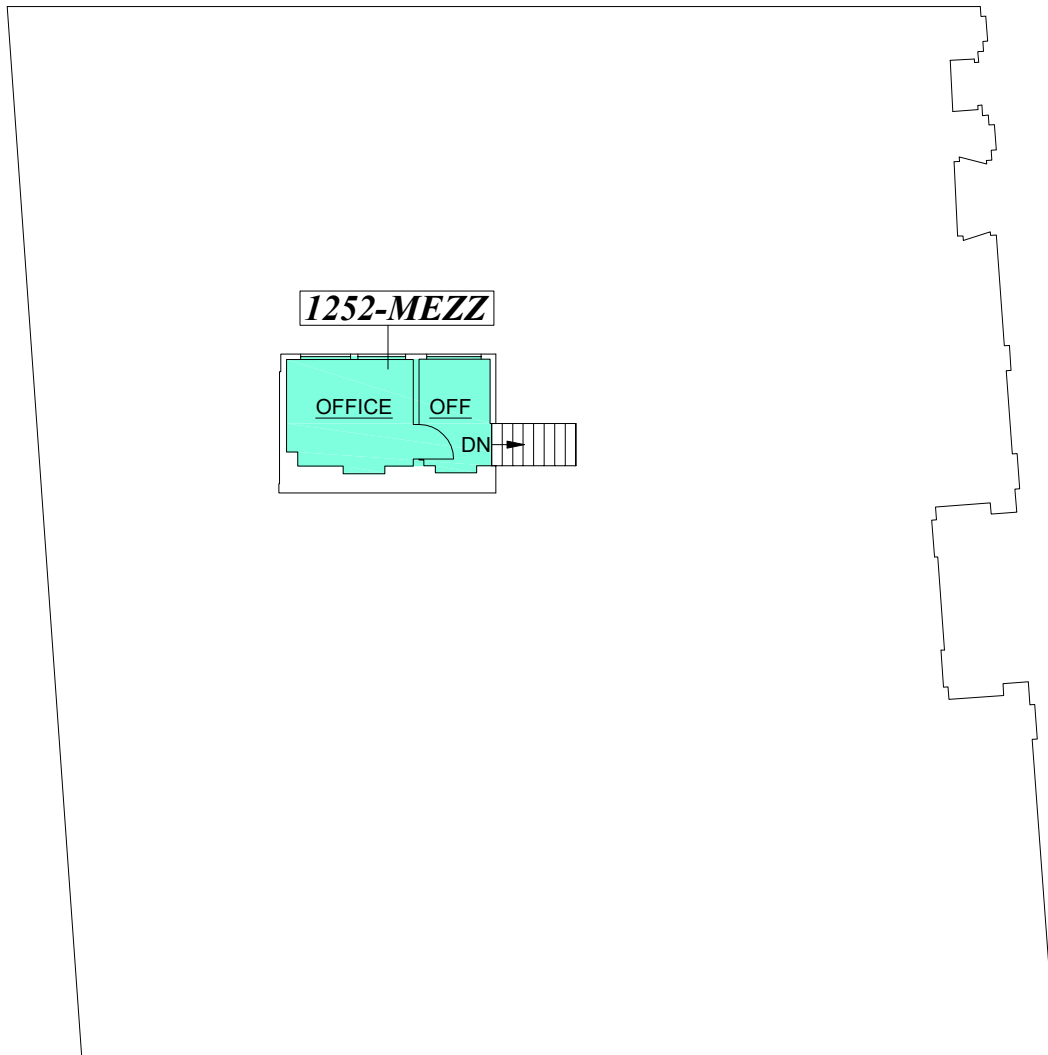
Reliance Properties  
305 - 111 Water St  
Vancouver, BC V6B 1A7  
Tel (604) 694-8681  
Fax (604) 683-6719

**THE GUILD**  
**1244-50 WHARF ST**  
**VICTORIA, BC**

**MEZZANINE**  
(As Measured: April 2017)  
(Last Updated: May 2017)

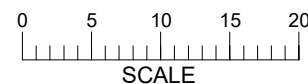
<http://www.relianceproperties.ca>

**LEASE PLAN**



Suite #	Usable	Rentable	% of Tot. R.
1252-MEZZ	118.4	125.1	0.6

Area included on 1st floor



AREAS COMPUTED IN ACCORDANCE WITH  
ANSI/BOMA (Z65.1) 1996 OFFICE STANDARD

Survey Accuracy: +/- 0.15 %

LASERTECH® is a registered US trademark of Lasertech® Floorplans Ltd.  
Copyright 1998 Lasertech® Floorplans Ltd., All Rights Reserved

TEL: (888) 393-6655  
FILE: 17-179

**PREPARED FOR:**

Reliance Properties  
305 - 111 Water St  
Vancouver, BC V6B 1A7  
Tel (604) 694-8681  
Fax (604) 683-6719

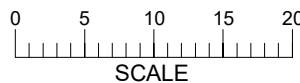
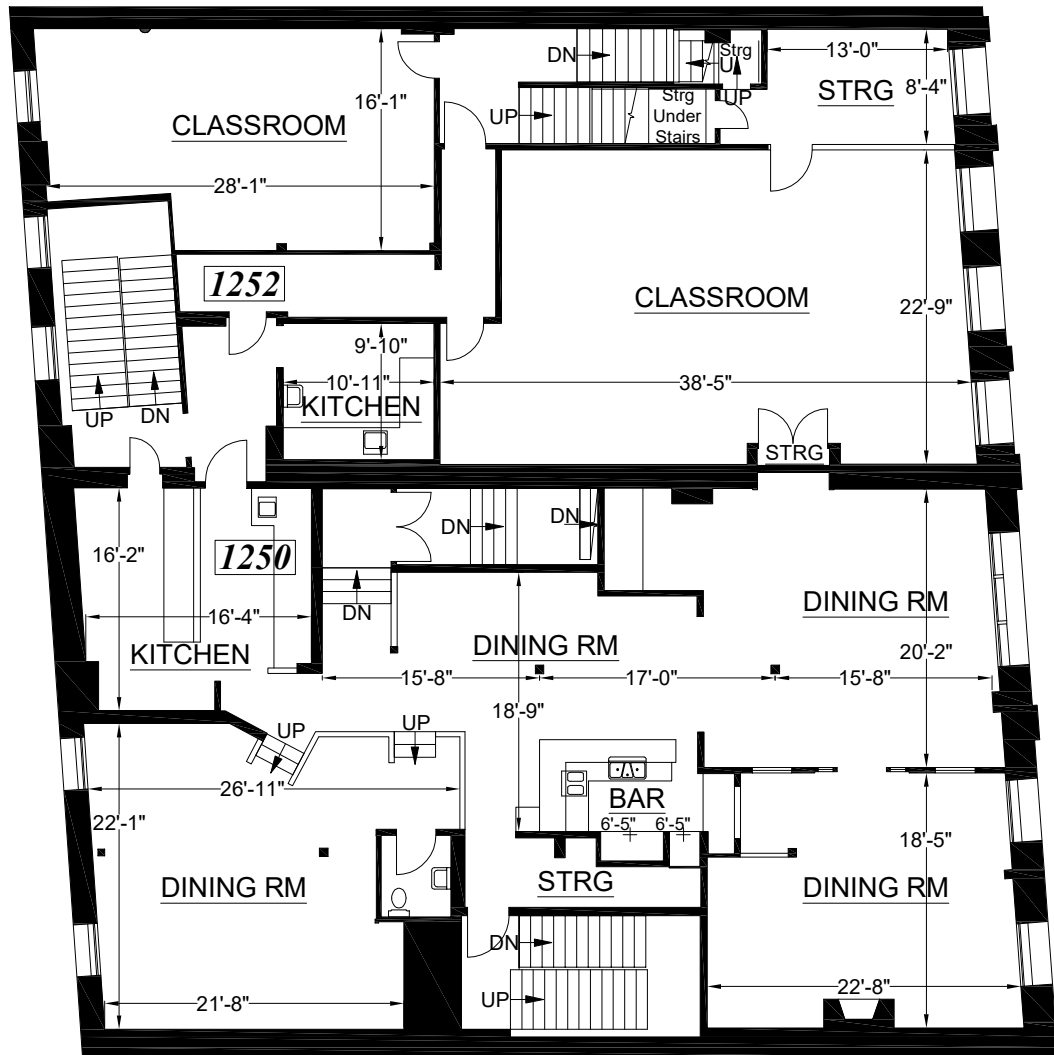
**THE GUILD**  
**1244-50 WHARF ST**  
**VICTORIA, BC**

**SECOND FLOOR**  
(As Measured: April 2017)

<http://www.relianceproperties.ca>

**FLOOR PLAN**

*\*Measured Area: 5,357 s.f.*



*\*Measured Area represents the footprint of the floor, and is used solely for billing purposes. It is NOT to be used for leasing purposes.*

ELEVATION LEGEND	
Spot Height AFF:	8'-9"

**Note:** All dimensions shown are rounded to the nearest inch, for informational purposes only. All measurements are recorded to 1/8" accuracy as documented in the final CAD drawing supplied.



**Survey Accuracy: +/- 0.14 %**

**LASERTECH®** is a registered US trademark of Lasertech® Floorplans Ltd. Copyright 1998 Lasertech® Floorplans Ltd., All Rights Reserved

TEL: (888) 393-6655  
FILE: 17-179

**PREPARED FOR:**

Reliance Properties  
 305 - 111 Water St  
 Vancouver, BC V6B 1A7  
 Tel (604) 694-8681  
 Fax (604) 683-6719

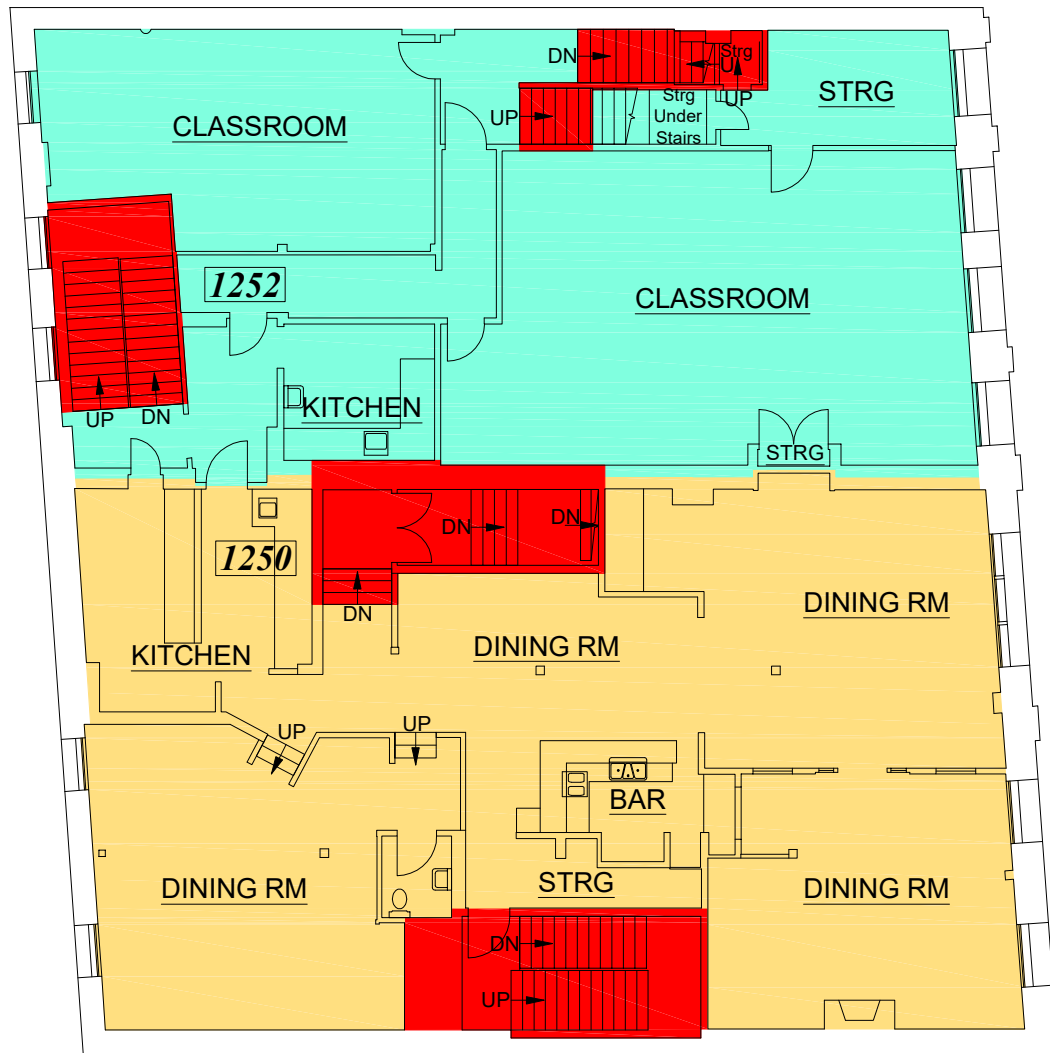
**THE GUILD**  
**1244-50 WHARF ST**  
**VICTORIA, BC**

**SECOND FLOOR**

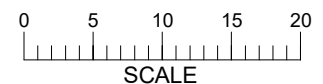
(As Measured: April 2017)  
 (Last Updated: May 2017)

<http://www.relianceproperties.ca>

**LEASE PLAN**



FLOOR SUMMARY	SQ.FT.
Total Rentable	4,435
Total Usable	4,196
Combined R/U	1.0568
Floor Common	0
Building Common	0
Total Vertical	607



Suite #	Usable	Rentable	% of Tot. R.
1250	2,298.8	2,429.4	10.9
1252	1,897.4	2,005.2	9.0

AREAS COMPUTED IN ACCORDANCE WITH  
 ANSI/BOMA (Z65.1) 1996 OFFICE STANDARD

LASERTECH® is a registered US trademark of Lasertech® Floorplans Ltd.  
 Copyright 1998 Lasertech® Floorplans Ltd., All Rights Reserved



Survey Accuracy: +/- 0.14 %

TEL: (888) 393-6655  
 FILE: 17-179

**PREPARED FOR:**

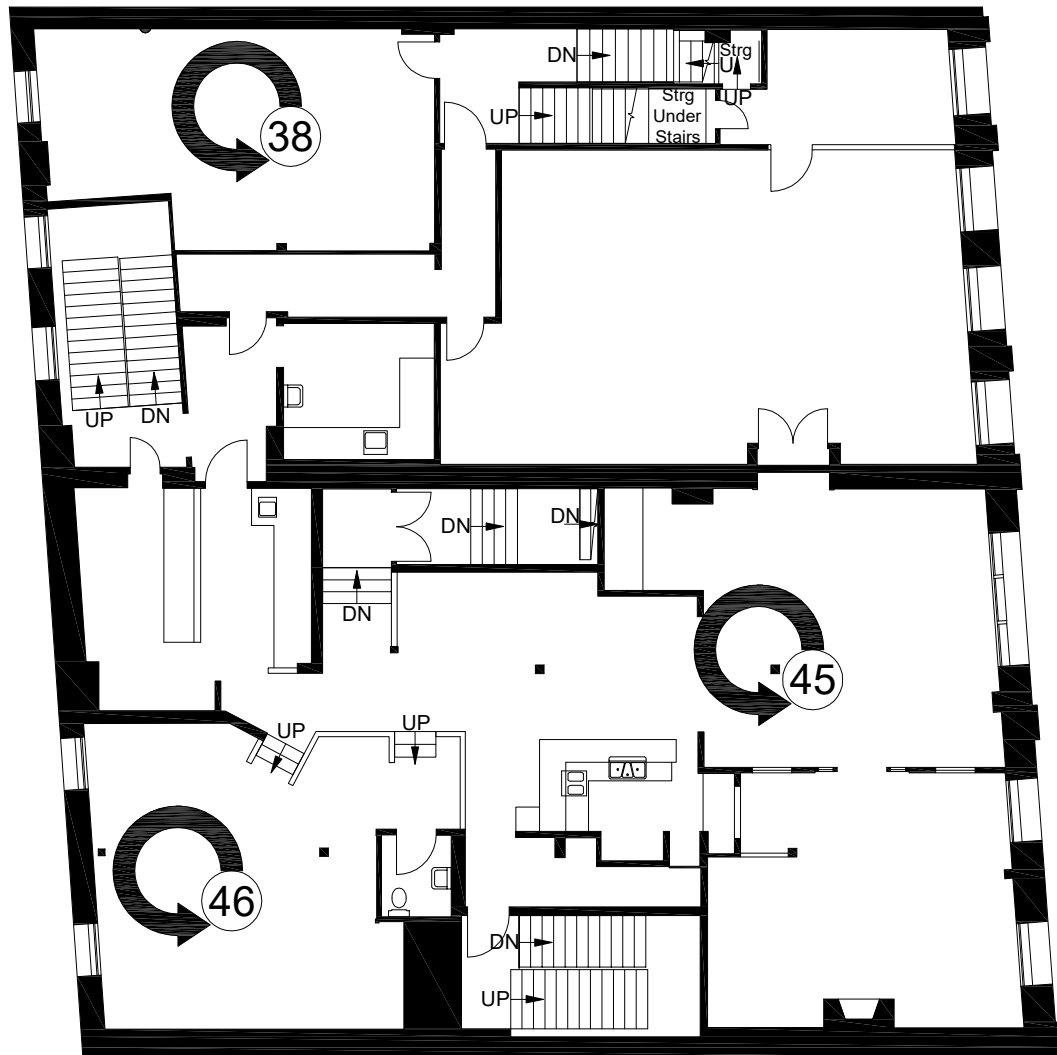
Reliance Properties  
305 - 111 Water St  
Vancouver, BC V6B 1A7  
Tel (604) 694-8681  
Fax (604) 683-6719

**THE GUILD**  
**1244-50 WHARF ST**  
**VICTORIA, BC**

**SECOND FLOOR**  
(As Measured: April 2017)

<http://www.relianceproperties.ca>

**PHOTO KEYMAP**





**PREPARED FOR:**

Reliance Properties  
305 - 111 Water St  
Vancouver, BC V6B 1A7  
Tel (604) 694-8681  
Fax (604) 683-6719

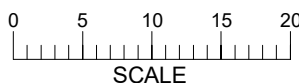
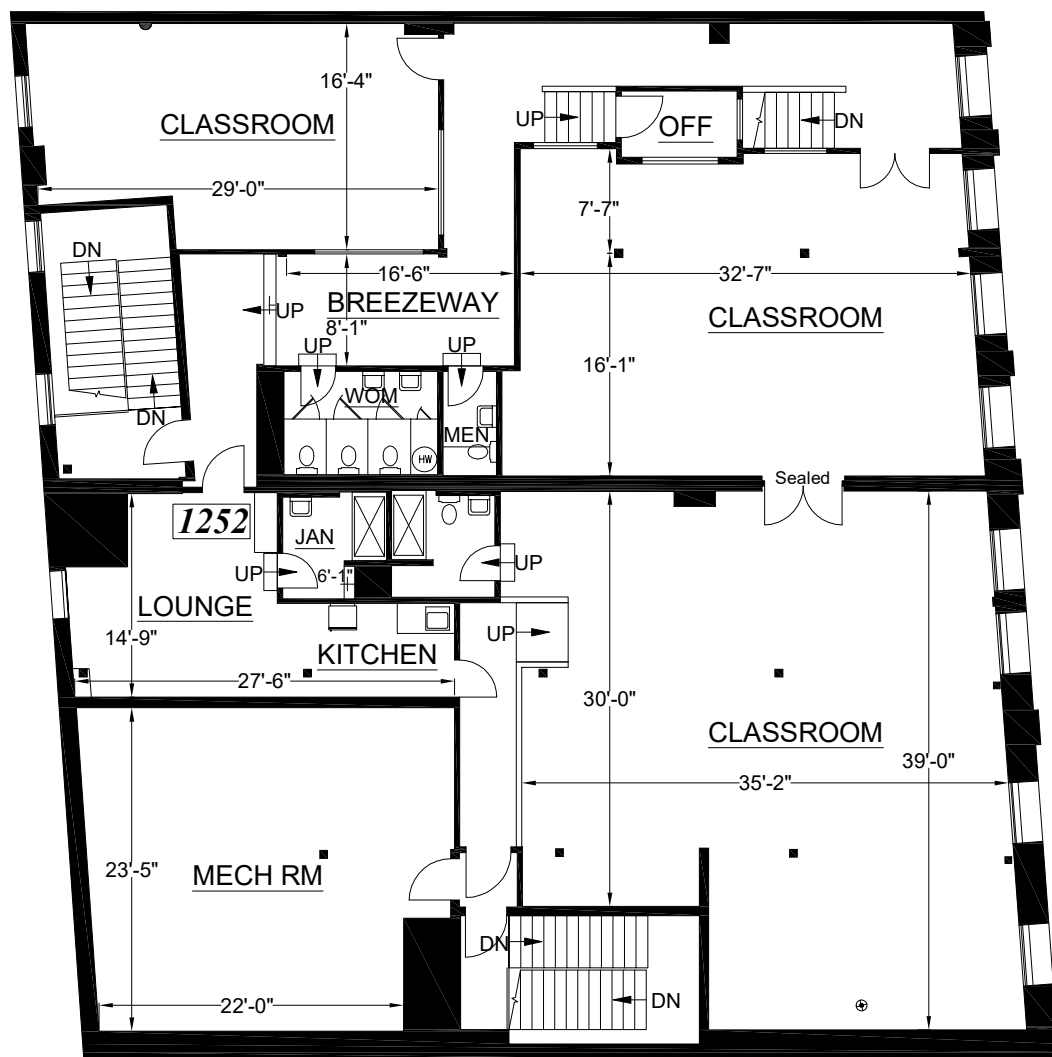
**THE GUILD  
1244-50 WHARF ST  
VICTORIA, BC**

**THIRD FLOOR**  
(As Measured: April 2017)

<http://www.relianceproperties.ca>

**FLOOR PLAN**

\*Measured Area: 5,357 s.f.



*\*Measured Area represents the footprint of the floor, and is used solely for billing purposes. It is NOT to be used for leasing purposes.*

ELEVATION LEGEND	
Spot Height AFF:	8'-9"

**Note:** All dimensions shown are rounded to the nearest inch, for informational purposes only. All measurements are recorded to 1/8" accuracy as documented in the final CAD drawing supplied.

**Survey Accuracy: +/- 0.13 %**

**LASERTECH®** is a registered US trademark of Lasertech® Floorplans Ltd. Copyright 1998 Lasertech® Floorplans Ltd., All Rights Reserved



TEL: (888) 393-6655  
FILE: 17-179

**PREPARED FOR:**

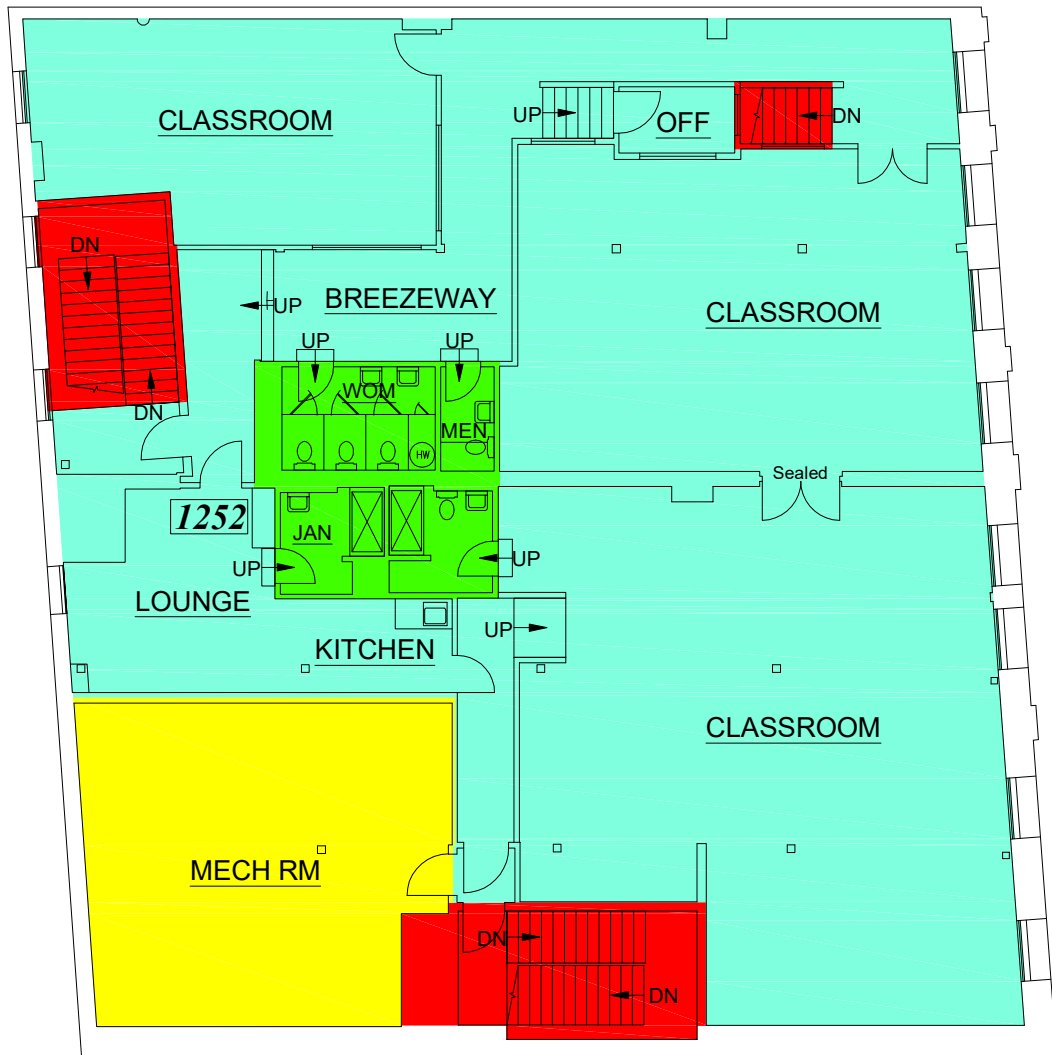
Reliance Properties  
 305 - 111 Water St  
 Vancouver, BC V6B 1A7  
 Tel (604) 694-8681  
 Fax (604) 683-6719

**THE GUILD**  
**1244-50 WHARF ST**  
**VICTORIA, BC**

**THIRD FLOOR**  
 (As Measured: April 2017)  
 (Last Updated: May 2017)

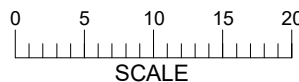
<http://www.relianceproperties.ca>

**LEASE PLAN**



FLOOR SUMMARY	SQ.FT.
Total Rentable	4,091
Total Usable	3,621
Combined R/U	1,1297
Floor Common	292
Building Common	603
Total Vertical	392

Suite #	Usable	Rentable	% of Tot. R.
1252	3,621.0	4,090.8	18.4



AREAS COMPUTED IN ACCORDANCE WITH  
 ANSI/BOMA (Z65.1) 1996 OFFICE STANDARD



Survey Accuracy: +/- 0.13 %

LASERTECH® is a registered US trademark of Lasertech® Floorplans Ltd.  
 Copyright 1998 Lasertech® Floorplans Ltd., All Rights Reserved

TEL: (888) 393-6655  
 FILE: 17-179

**PREPARED FOR:**

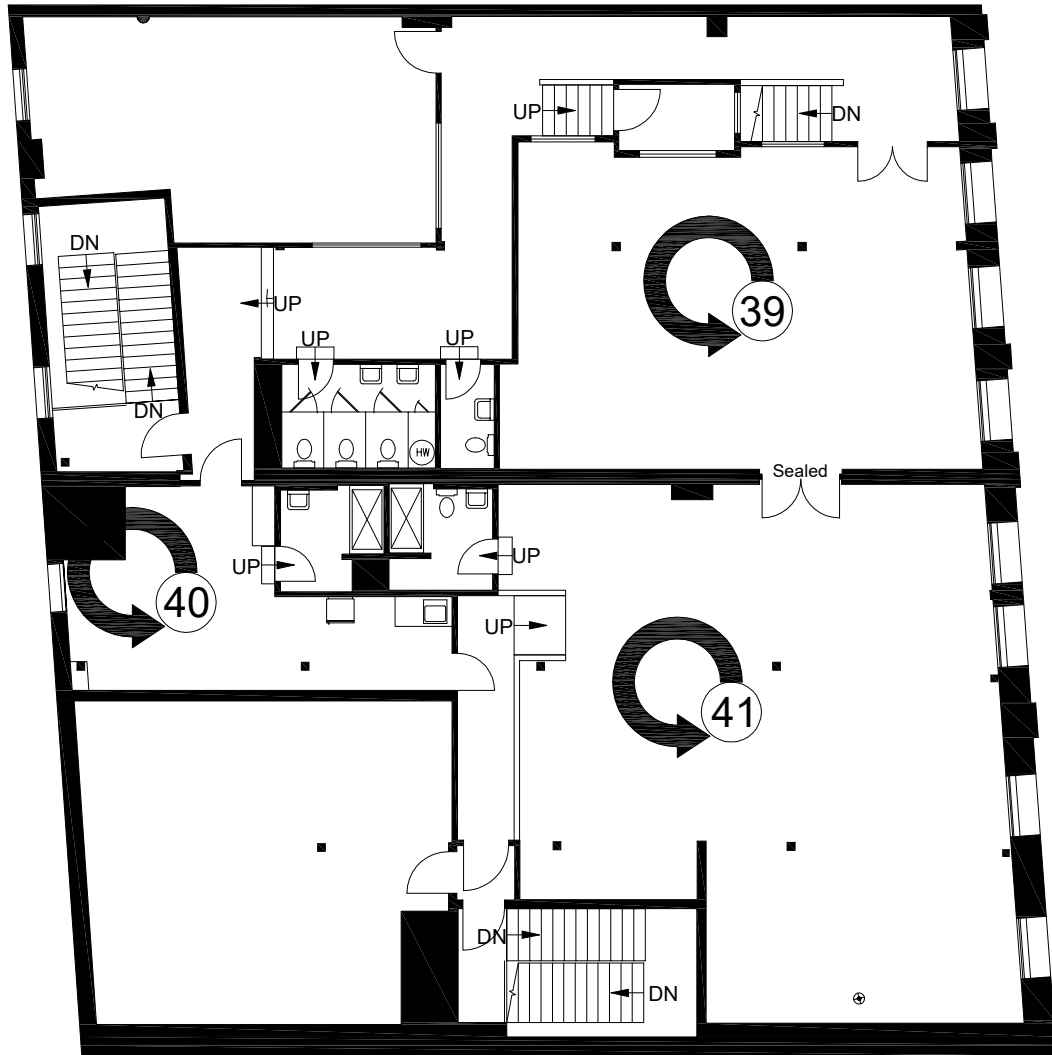
Reliance Properties  
305 - 111 Water St  
Vancouver, BC V6B 1A7  
Tel (604) 694-8681  
Fax (604) 683-6719

**THE GUILD**  
**1244-50 WHARF ST**  
**VICTORIA, BC**

**THIRD FLOOR**  
(As Measured: April 2017)

<http://www.relianceproperties.ca>

**PHOTO KEYMAP**



**PREPARED FOR:**

Reliance Properties  
305 - 111 Water St  
Vancouver, BC V6B 1A7  
Tel (604) 694-8681  
Fax (604) 683-6719

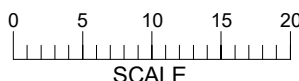
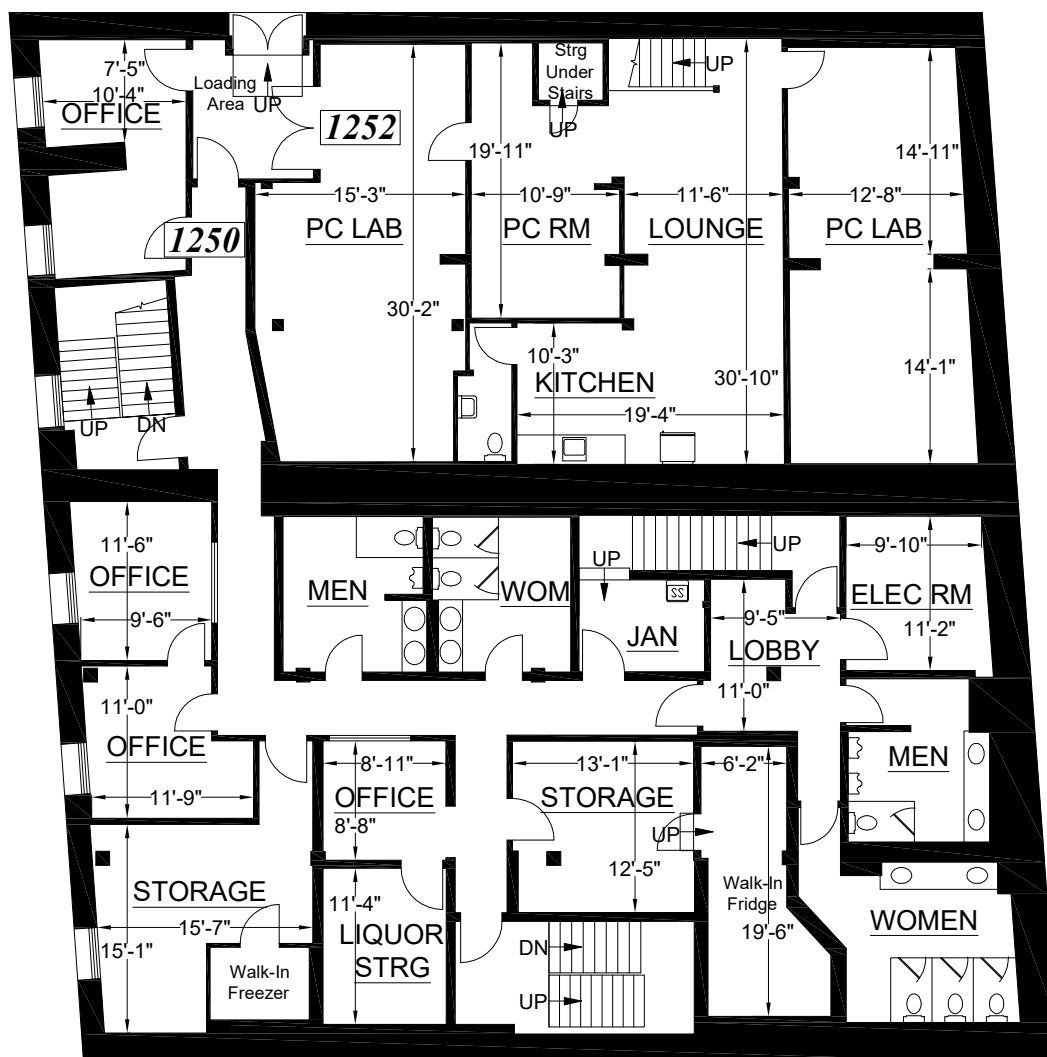
**THE GUILD**  
**1244-50 WHARF ST**  
**VICTORIA, BC**

**BASEMENT**  
(As Measured: April 2017)

<http://www.relianceproperties.ca>

**FLOOR PLAN**

\*Measured Area: 5,356 s.f.



*\*Measured Area represents the footprint of the floor, and is used solely for billing purposes. It is NOT to be used for leasing purposes.*

**Note:** All dimensions shown are rounded to the nearest inch, for informational purposes only. All measurements are recorded to 1/8" accuracy as documented in the final CAD drawing supplied.



Survey Accuracy: +/- 0.15 %

LASERTECH® is a registered US trademark of Lasertech® Floorplans Ltd. Copyright 1998 Lasertech® Floorplans Ltd., All Rights Reserved

TEL: (888) 393-6655  
FILE: 17-179

**PREPARED FOR:**

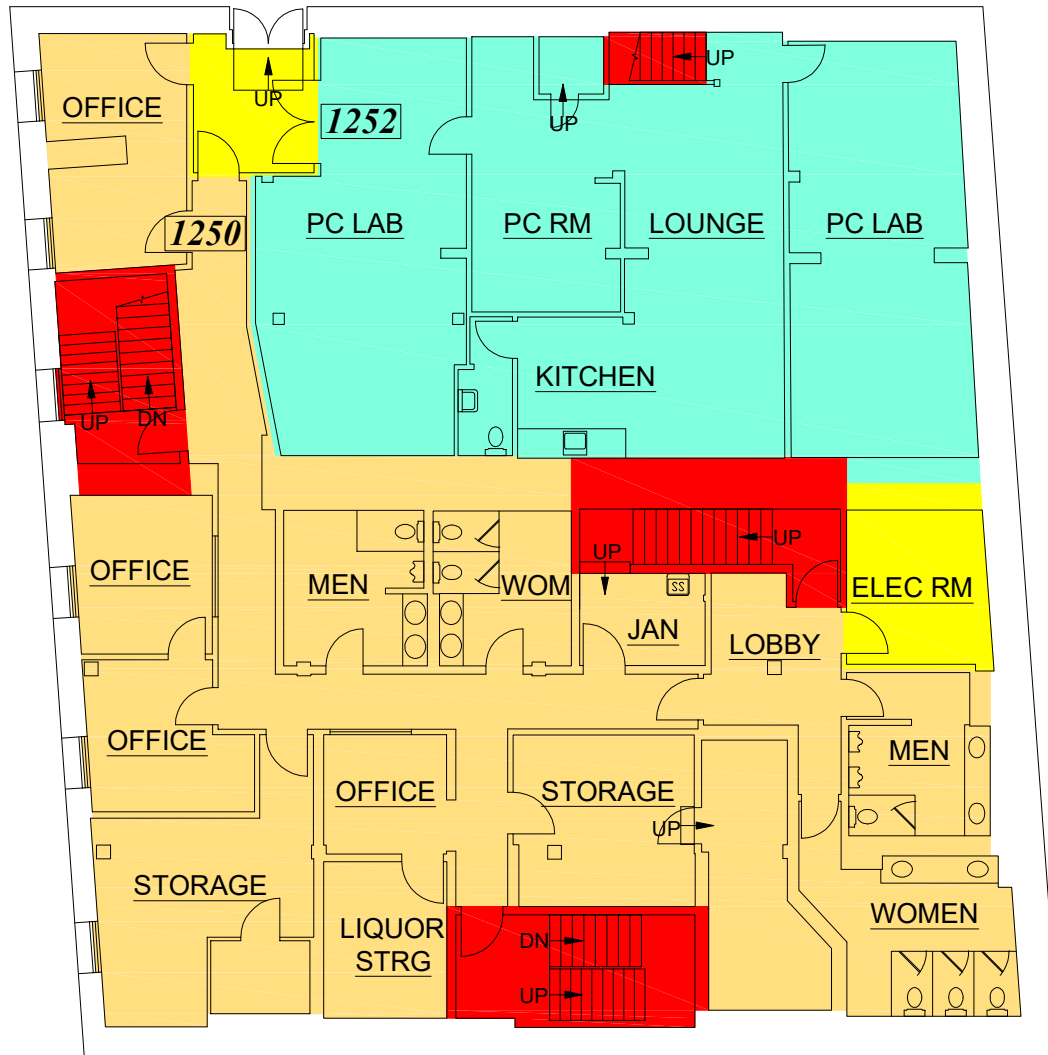
Reliance Properties  
 305 - 111 Water St  
 Vancouver, BC V6B 1A7  
 Tel (604) 694-8681  
 Fax (604) 683-6719

**THE GUILD**  
**1244-50 WHARF ST**  
**VICTORIA, BC**

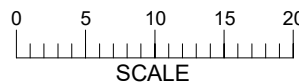
**BASEMENT**  
 (As Measured: April 2017)  
 (Last Updated: May 2017)

**LEASE PLAN**

<http://www.relianceproperties.ca>



FLOOR SUMMARY	SQ.FT.
Total Rentable	4,173
Total Usable	3,949
Combined R/U	1.0568
Floor Common	0
Building Common	225
Total Vertical	507



Suite #	Usable	Rentable	% of Tot. R.
1250	2,441.5	2,580.2	11.6
1252	1,507.1	1,592.7	7.2

AREAS COMPUTED IN ACCORDANCE WITH  
 ANSI/BOMA (Z65.1) 1996 OFFICE STANDARD

LASERTECH® is a registered US trademark of Lasertech® Floorplans Ltd.  
 Copyright 1998 Lasertech® Floorplans Ltd., All Rights Reserved



Survey Accuracy: +/- 0.15 %

TEL: (888) 393-6655  
 FILE: 17-179

**PREPARED FOR:**

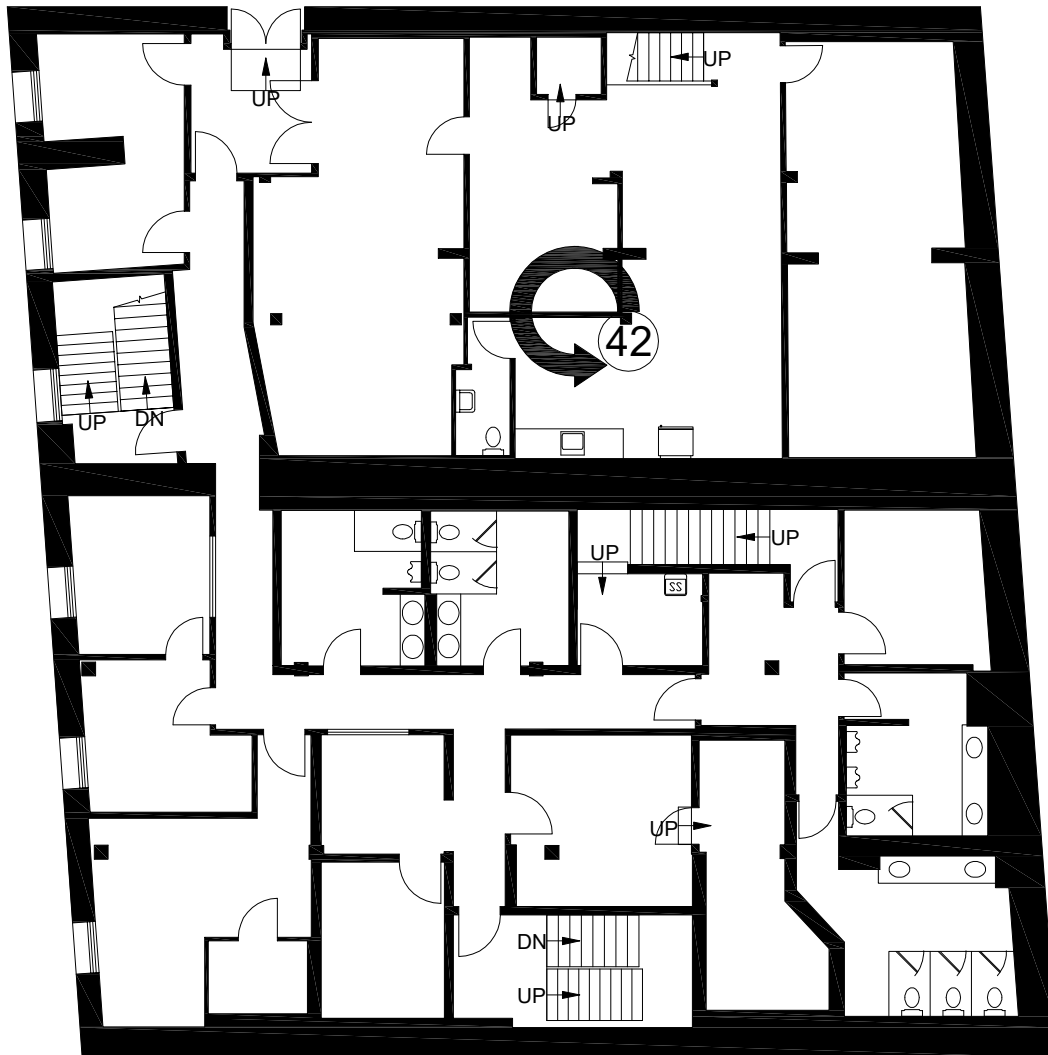
Reliance Properties  
305 - 111 Water St  
Vancouver, BC V6B 1A7  
Tel (604) 694-8681  
Fax (604) 683-6719

**THE GUILD**  
**1244-50 WHARF ST**  
**VICTORIA, BC**

**BASEMENT**  
(As Measured: April 2017)

<http://www.relianceproperties.ca>

**PHOTO KEYMAP**



**PREPARED FOR:**

Reliance Properties  
305 - 111 Water St  
Vancouver, BC V6B 1A7  
Tel (604) 694-8681  
Fax (604) 683-6719

**THE GUILD**  
**1244-50 WHARF ST**  
**VICTORIA, BC**

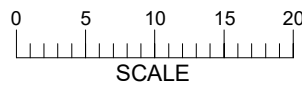
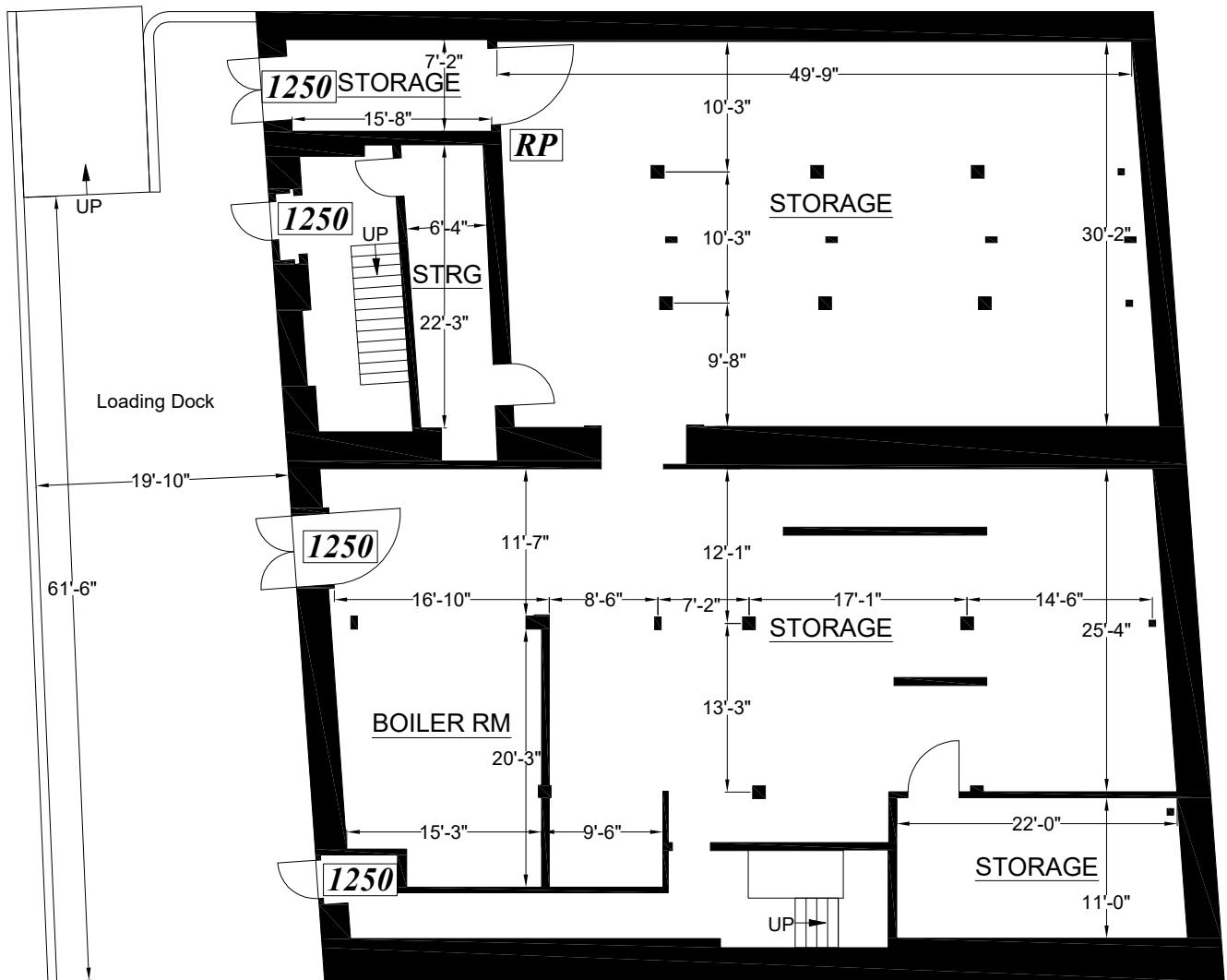
**BASEMENT 2**  
(As Measured: April 2017)

<http://www.relianceproperties.ca>

**FLOOR PLAN**



*\*Measured Area: 5,356 s.f.*  
*Loading Dock: 1,411 s.f.*



*\*Measured Area represents the footprint of the floor, and is used solely for billing purposes. It is NOT to be used for leasing purposes.*

**Note:** All dimensions shown are rounded to the nearest inch, for informational purposes only. All measurements are recorded to 1/8" accuracy as documented in the final CAD drawing supplied.



**Survey Accuracy: +/- 0.15 %**

**LASERTECH®** is a registered US trademark of Lasertech® Floorplans Ltd.  
Copyright 1998 Lasertech® Floorplans Ltd., All Rights Reserved

TEL: (888) 393-6655  
FILE: 17-179

**PREPARED FOR:**

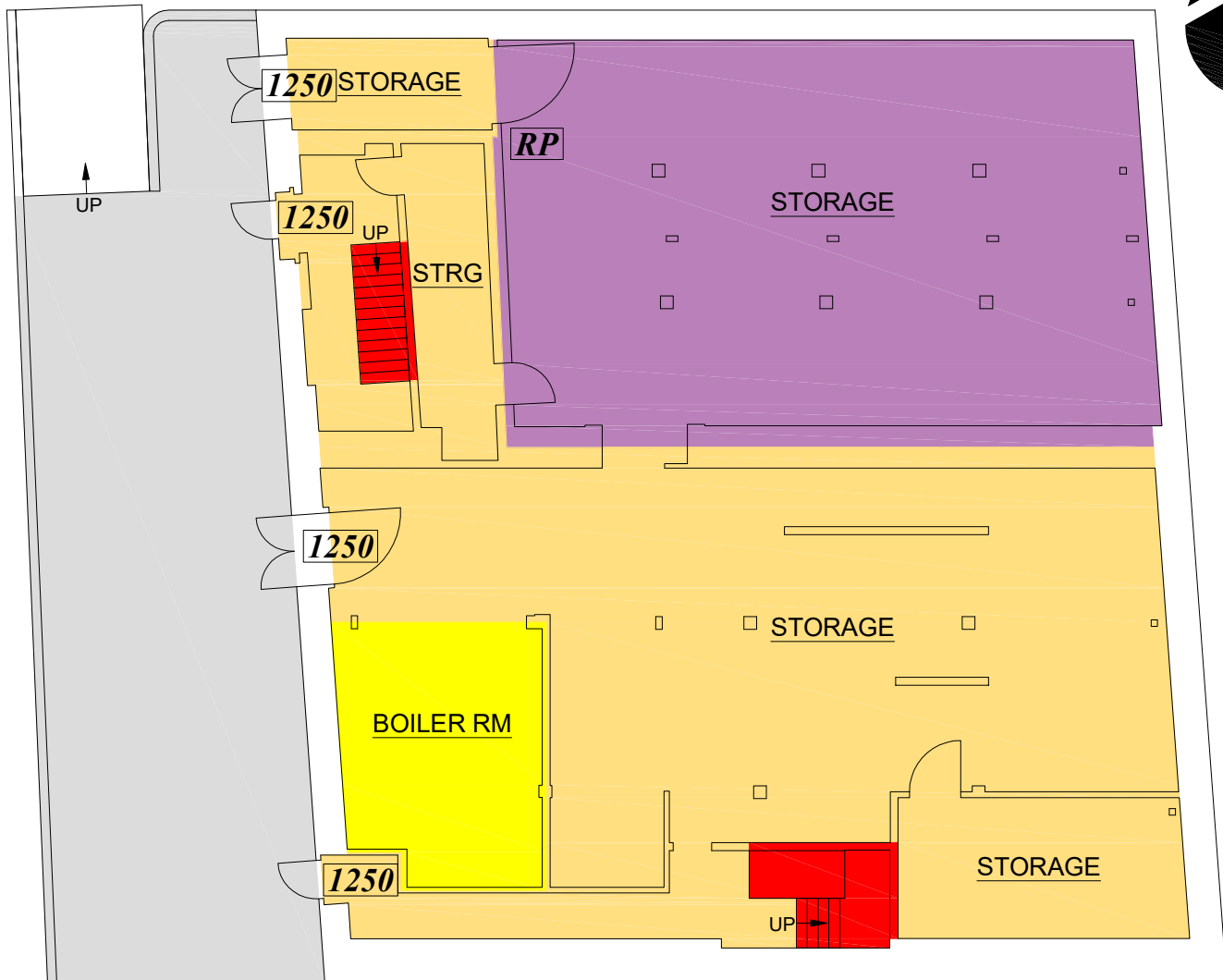
Reliance Properties  
 305 - 111 Water St  
 Vancouver, BC V6B 1A7  
 Tel (604) 694-8681  
 Fax (604) 683-6719

**THE GUILD**  
**1244-50 WHARF ST**  
**VICTORIA, BC**

**BASEMENT 2**  
 (As Measured: April 2017)  
 (Last Updated: May 2017)

<http://www.relianceproperties.ca>

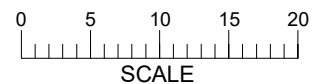
**LEASE PLAN**



*Loading Dock: 1,411 s.f.*

FLOOR SUMMARY	SQ.FT.
Total Rentable	4,433
Total Usable	4,195
Combined R/U	1.0568
Floor Common	0
Building Common	325
Total Vertical	130

Suite #	Usable	Rentable	% of Tot. R.
1250	2,577.4	2,723.8	12.3
RP	1,617.1	1,709.0	7.7



AREAS COMPUTED IN ACCORDANCE WITH  
 ANSI/BOMA (Z65.1) 1996 OFFICE STANDARD

LASERTECH® is a registered US trademark of Lasertech® Floorplans Ltd.  
 Copyright 1998 Lasertech® Floorplans Ltd., All Rights Reserved



Survey Accuracy: +/- 0.15 %

TEL: (888) 393-6655  
 FILE: 17-179



**PREPARED FOR:**

Reliance Properties  
305 - 111 Water St  
Vancouver, BC V6B 1A7  
Tel (604) 694-8681  
Fax (604) 683-6719

**THE GUILD**  
**1244-50 WHARF ST**  
**VICTORIA, BC**

**BASEMENT 2**  
(As Measured: April 2017)

<http://www.relianceproperties.ca>

**PHOTO KEYMAP**

