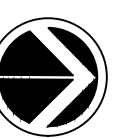
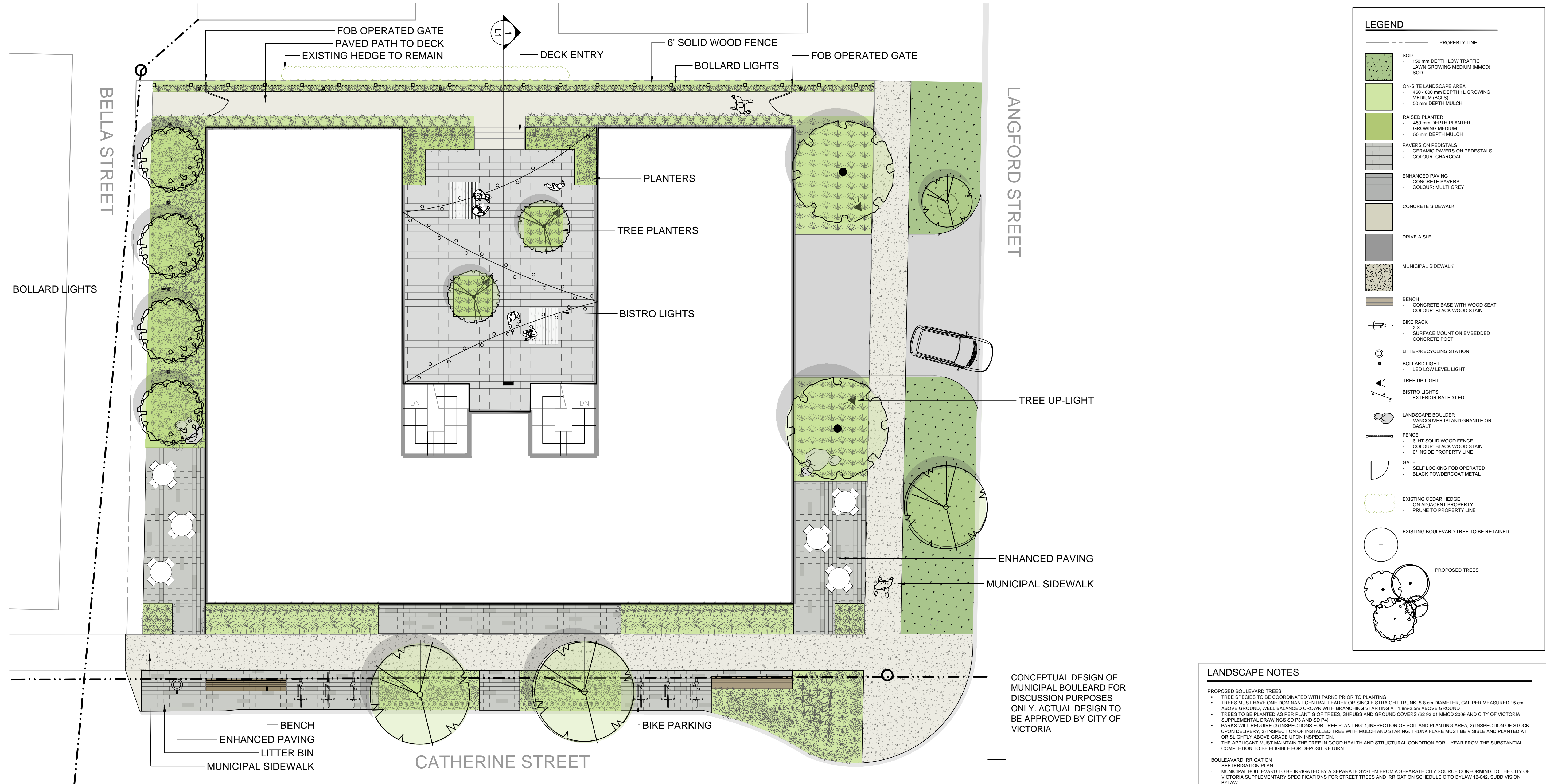

 Inventory date: September 17, 2020
 Tree Resource Spreadsheet - 822 Catherine Street
 Page 1 of 1

Tree ID	Common Name	Latin Name	DBH (cm) - approximate	Crown Spread (meters)	CRZ (meters)	Relative Tolerance (low, moderate, poor)	Health	Structure	Remarks and Recommendations	Bylaw Protected	Retention Status
NT1	Purple Leaf Plum	<i>Prunus cerasifera</i>	39.0	5.0	5.0	Moderate	Fair-poor	Fair-poor	Municipal ID#: 30016; dieback, decay in 2 of 4 scaffold limbs.	Yes, municipal	
NT2	Purple Leaf Plum	<i>Prunus cerasifera</i>	32.0	4.0	4.0	Moderate	Fair	Fair	Municipal ID#: 30017; competing with adjacent hawthorn.	Yes, municipal	
NT3	Purple Leaf Plum	<i>Prunus cerasifera</i>	2.0	1.0	1.0	Moderate	Fair	Fair	Municipal ID#: 30018; newly planted.	Yes, municipal	
NT4	Holly	<i>Ilex spp.</i>	45 (21 + 60% of 21.19)	5.0	6.0	Good	Fair	Fair	Fill and green waste in root zone.	Yes	○
NT5	Hawthorn	<i>Craetagus spp.</i>	45 (-30 + 60% of -25)	6.0	5.5	Good	Fair	Fair	Pruning stubs, sap-sucker damage.	Yes	○
NT6	Chinese Juniper	<i>Juniperus chinensis</i>	22.0	4.0	2.5	Moderate	Fair	Fair	Codominant top, sparse growth and some lower dieback. Close proximity to building.	No	
NT7	Pyramidal Cedar	<i>Thuja occidentalis</i>	27 (9 + 60% of 8.8, 3.7)	1.0	4.5	Moderate	Fair	Fair	Maintained as shrub, against building.	No	
NT8	Pyramidal Cedar	<i>Thuja occidentalis</i>	33 (11 + 60% of 6.7, 6.11)	1.0	6.0	Moderate	Fair	Fair	Maintained as shrub, against building.	Yes	○
NT9	Pyramidal Cedar	<i>Thuja occidentalis</i>	27 (12 + 60% of 11.6, 4.9)	1	4.5	Moderate	Fair	Fair	Maintained as shrub, against building.	No	
NT10	Holly	<i>Ilex spp.</i>	23	2	2.5	Good	Fair-poor	Fair-poor	Pruning stubs, topped, new leaders.	No	
NT11	Holly	<i>Ilex spp.</i>	15	3	1.5	Good	Fair	Fair	Deflected trunk. Close proximity to building and window.	No	
NT12	Chinese Juniper	<i>Juniperus chinensis</i>	21	3	2.5	Moderate	Fair-poor	Fair-poor	Multiple leaders, sparse growth, dieback.	No	

 Prepared by:
 Talbot Mackenzie & Associates
 ISA Certified and Consulting Arborists
 Phone: (250) 479-8733
 Fax: (250) 479-7050
 email: tmbtreehelp@gmail.com

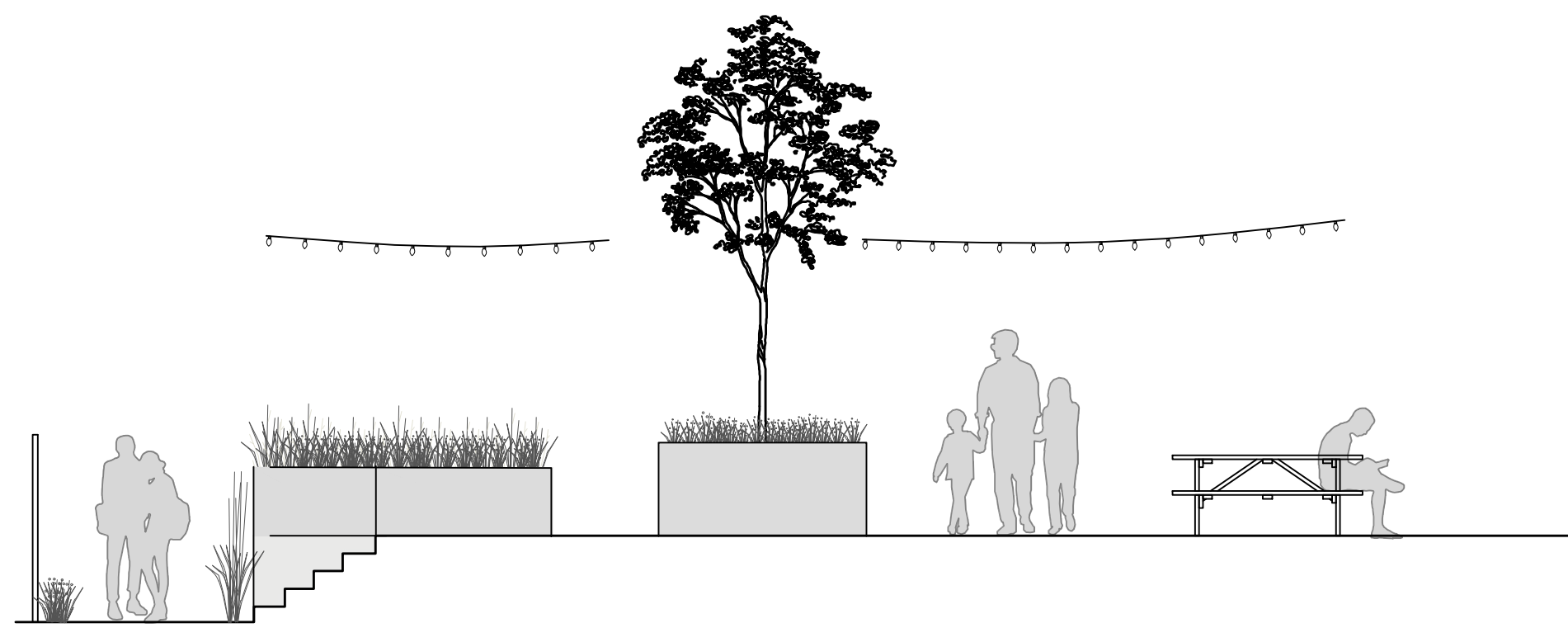
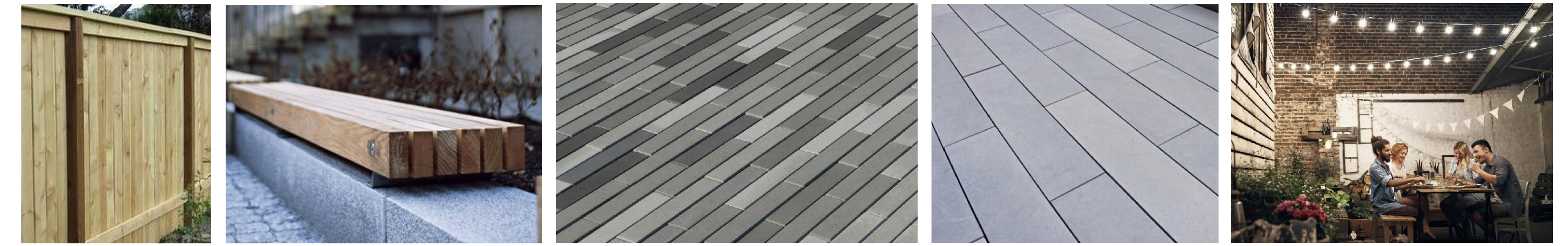
PROTECTED TREE REMOVAL	
NUMBER OF BYLAW PROTECTED TREES ONSITE:	3
NUMBER OF BYLAW PROTECTED TREES ONSITE TO BE REMOVED:	3
NUMBER OF REPLACEMENT TREES REQUIRED ONSITE:	6



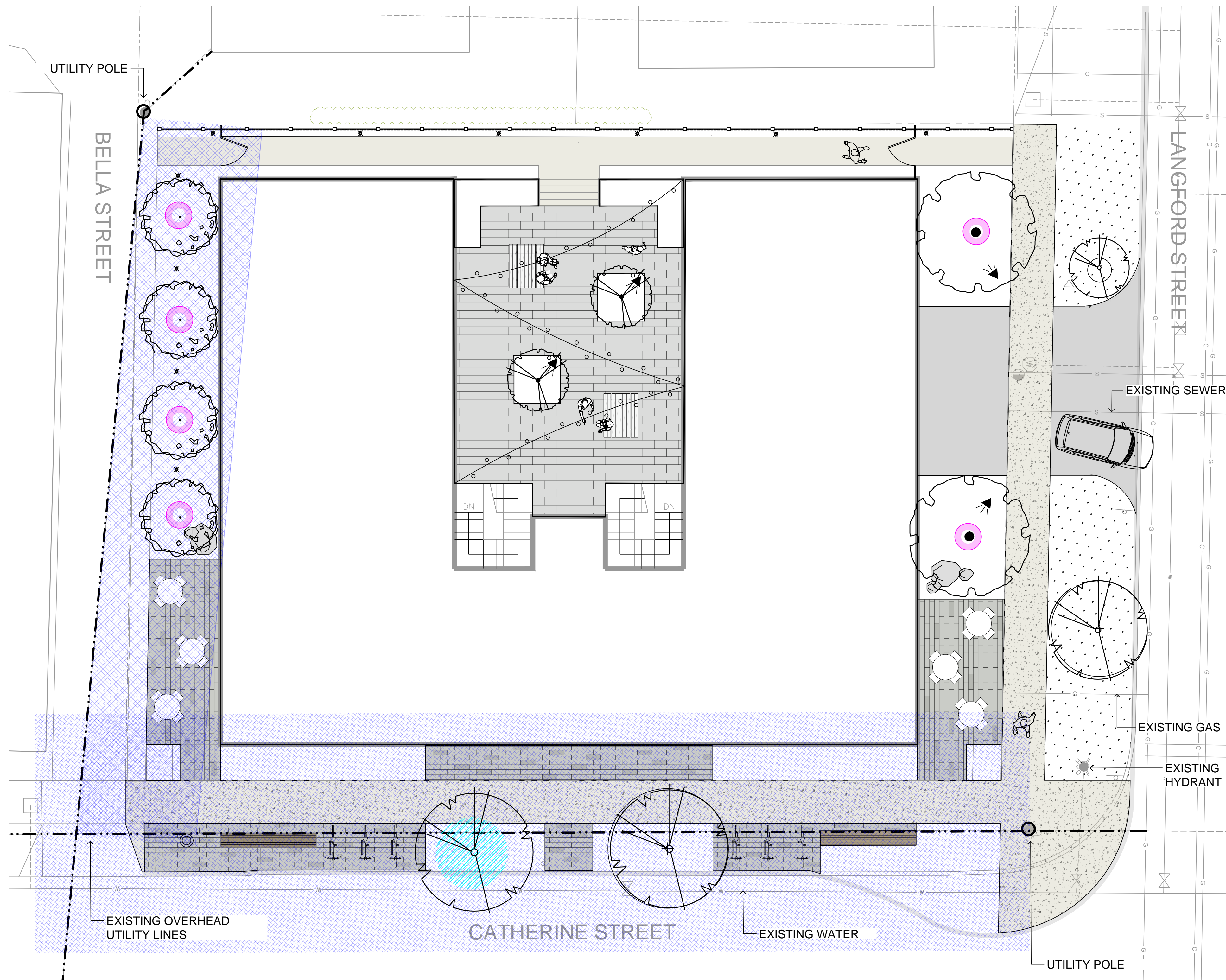


CONCEPTUAL DESIGN OF MUNICIPAL BOULEVARD FOR DISCUSSION PURPOSES ONLY. ACTUAL DESIGN TO BE APPROVED BY CITY OF VICTORIA

- LANDSCAPE NOTES**
- PROPOSED BOULEVARD TREES
 - TREE SPECIES TO BE COORDINATED WITH PARKS PRIOR TO PLANTING
 - TREES MUST HAVE ONE DOMINANT CENTRAL LEADER OR SINGLE STRAIGHT TRUNK, 5-8 cm DIAMETER, CALIPER MEASURED 15 cm ABOVE GROUND, WELL-BALANCED CROWN WITH BRANCHING STARTING AT 1.8m/2.5m ABOVE GROUND
 - TREES TO BE PLANTED AS PER PLANTING OF TREES, SHRUBS AND GROUND COVERS (32 93 01 MMCD 2009 AND CITY OF VICTORIA SUPPLEMENTAL DRAWINGS SD P3 AND SD P4)
 - PARKS WILL REQUIRE (3) INSPECTIONS FOR TREE PLANTING: 1) INSPECTION OF SOIL AND PLANTING AREA, 2) INSPECTION OF STOCK UPON DELIVERY, 3) INSPECTION OF INSTALLED TREE WITH MULCH AND STAKING. TRUNK FLARE MUST BE VISIBLE AND PLANTED AT OR SLIGHTLY ABOVE GRADE UPON INSPECTION.
 - THE APPLICANT MUST MAINTAIN THE TREE IN GOOD HEALTH AND STRUCTURAL CONDITION FOR 1 YEAR FROM THE SUBSTANTIAL COMPLETION TO BE ELIGIBLE FOR DEPOSIT RETURN.
 - BOULEVARD IRRIGATION
 - SEE IRRIGATION PLAN
 - MUNICIPAL BOULEVARD TO BE IRRIGATED BY A SEPARATE SYSTEM FROM A SEPARATE CITY SOURCE CONFORMING TO THE CITY OF VICTORIA SUPPLEMENTARY SPECIFICATIONS FOR STREET TREES AND IRRIGATION SCHEDULE C TO BYLAW 12-042, SUBDIVISION BYLAW.
 - IRRIGATION DESIGN DRAWINGS MUST BE SENT TO PARKS FOR REVIEW 30 DAYS PRIOR TO INSTALLATION.
 - DRAWINGS SHOULD INDICATE ALL COMPONENTS, MODELS AND MATERIALS FROM WATER SUPPLY TO IRRIGATION HEADS.
 - THE CITY WILL REQUIRE 4 INSPECTIONS FOR IRRIGATION INSTALLATION: 1) SLEEVING, 2) OPEN TRENCH MAINLINE AND PRESSURE TEST, 3) OPEN TRENCH AND LATERAL LINE, 4) OPERATION AND COVERAGE, AND BACKFLOW PREVENTER ASSEMBLY TEST REPORT.



1 DECK SECTION
L1 1:60



LEGEND

- EX GAS
- EX WATER
- EX SANITARY
- EX STORM
- EX OVERHEAD
- EX FIRE HYDRANT

TREE PLANTING RESTRICTIONS

- OVERHEAD POWER LINE
- 5.0 m FROM OVERHEAD POWER LINE
NO TREES OVER 5.0 m HT
- 1.5 m OFFSET FROM EDGE OF UTILITY TO CENTRE OF TREE
- 5.0 m OFFSET FROM HYDRO OR LIGHT POLE
- DESIGNATED REPLACEMENT TREE

SCHEDULE

ID	Quantity	Symbol	Latin Name	Common Name	Container	Caliper	Size
	2		Acer Griseum	Paperbark Maple			
	4		Stewartia rostrata	Stewartia			
	2		Cercidiphllum japonicum	Katsura tree			
	1		Prunus cerasifera	Purple leaf plum			

PROTECTED TREE REPLACEMENT

NUMBER OF BYLAW PROTECTED TREES ONSITE TO BE REMOVED:	3
NUMBER OF REPLACEMENT TREES REQUIRED ONSITE:	6
NUMBER OF REPLACEMENT TREES PROPOSED:	



STEWARTIA



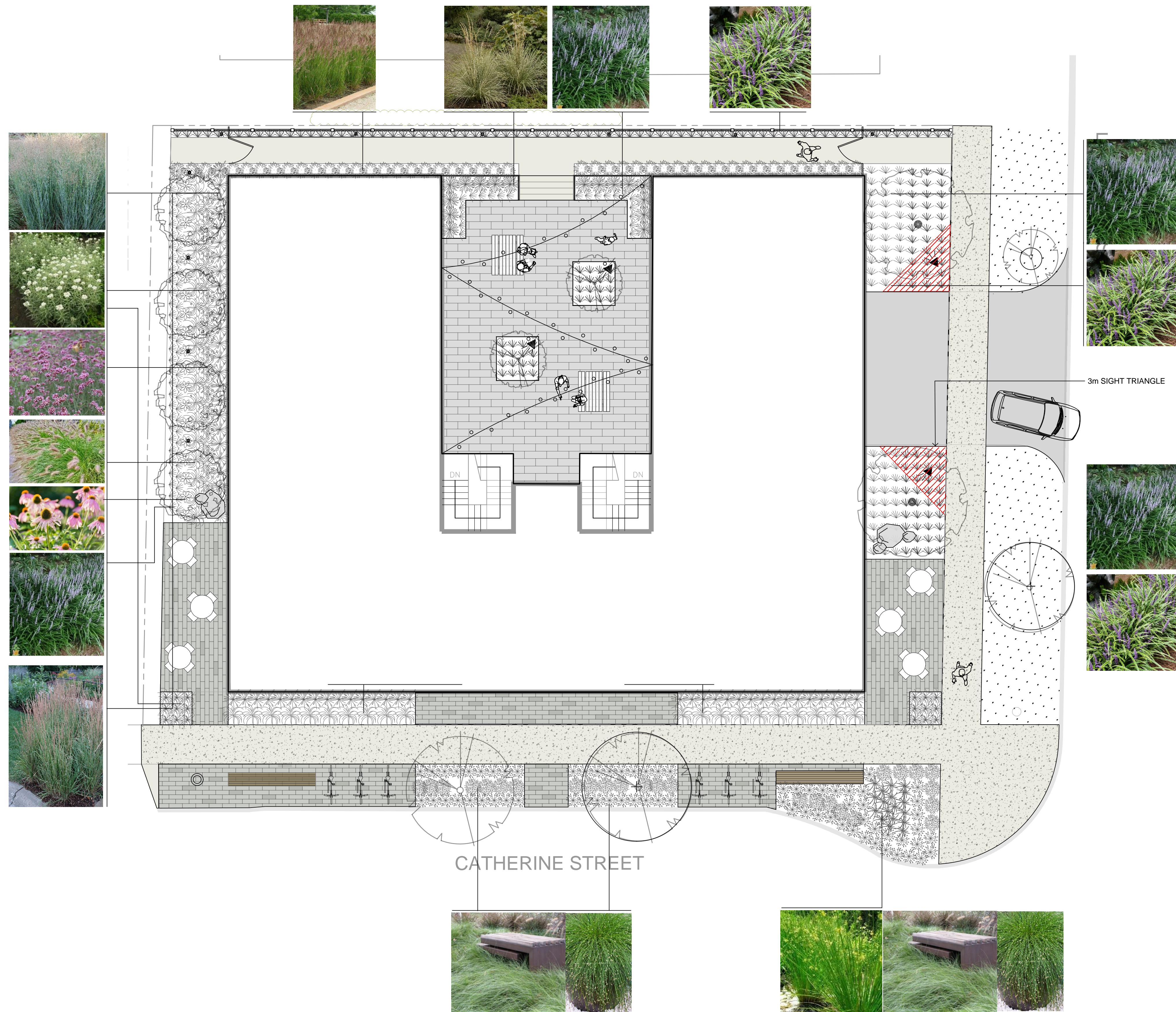
PURPLE LEAF PLUM



PAPERBARK MAPLE



KATSURA


PLANT SCHEDULE

Quantity	Symbol	Latin Name	Common Name	Container	Native	Pollinator	Remarks
28		<i>Carex praegracilis</i>	Clustered field sedge	#1			
21		<i>Calamagrostis acutiflora</i> 'Karl Forester'	Karl Forester feather reed grass	#1			
16		<i>Calamagrostis acutiflora</i> 'Overdam'	Variegated feather reed Grass	#1			
9		<i>Deschampsia caespitosa</i>	Tufted hair grass	#1	yes		
19		<i>Echinacea purpurea</i>	Purple coneflower	#1		yes	
18		<i>Juncus effusus</i>	Common rush	#1	yes		
8		<i>Liriope muscari</i>	Liriope	TRAY			
8		<i>Liriope muscari</i> 'Variegata'	Variegated liriope	TRAY			
57		<i>Panicum virgatum</i>	Blue switch grass	#1	yes		
39		<i>Pennisetum alopecuroides</i>	Fountain grass	#2			
18		<i>Anaphalis margaritacea</i>	Pearly everlasting	#1	yes		
70		<i>Solepis cernua</i>	Fiber optic grass	#1			
16		<i>Verbena bonariensis</i>	Tall verbena	#1		yes	

NOTES:

1. PLANTS IN PLANT LISTS ARE SPECIFIED ACCORDING TO THE CANADIAN NURSERY LANDSCAPE ASSOCIATION CANADIAN STANDARDS FOR NURSERY STOCK AND SECTION 12, CONTAINER GROWN PLANTS FROM THE BC LANDSCAPE STANDARD, CURRENT EDITION.