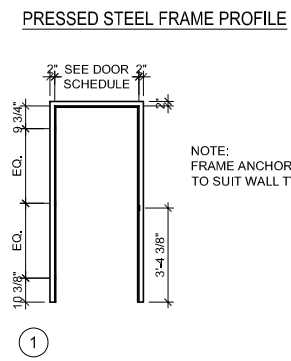
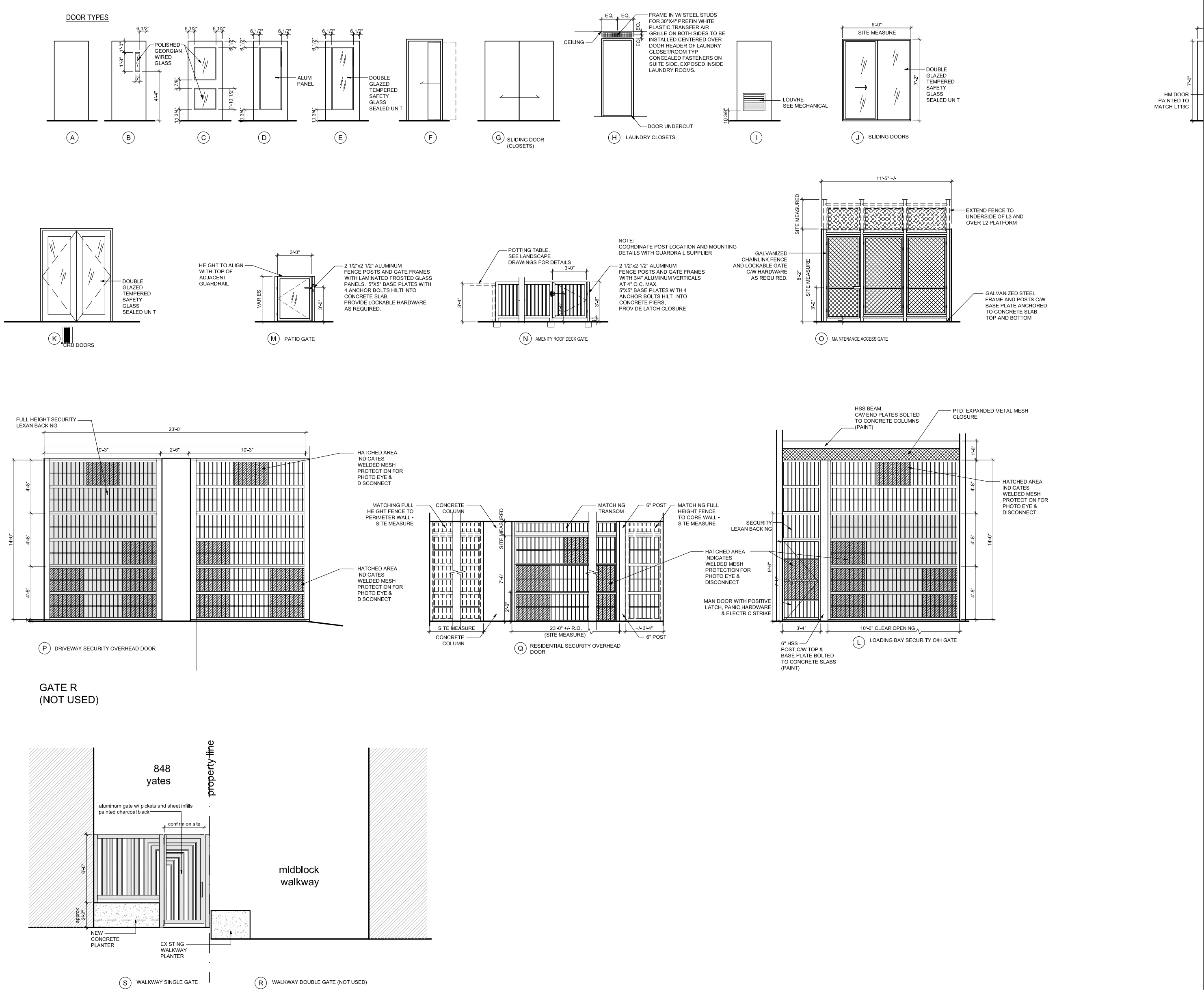


TENDER TOTAL: 840 YATE STREET, VICTORIA, BC Report: R001 DOOR SCHEDULE												
REV	NO	ROOM NAME	ROOM NUMBER	SIZE	LABEL	DOOR	FRAME	DET.	GLASS	COLOR		REMARKS
Fitting Level 1												
F001	Plaster/Late/Late/Late	F001	2.0 x 2.0	1.10	B	H80	P1	1	PS	PT	-	Paint 1-Door Network Spec.
F002	Plaster/Late/Late/Late	F002	2.0 x 2.0	1.10	B	H80	P1	1	PS	PT	-	Paint 1-Door Network Spec.
F003	Plaster/Late/Late/Late	F003	2.0 x 2.0	1.10	B	H80	P1	1	PS	PT	-	Paint 1-Door Network Spec.
F004	Plaster/Late/Late/Late	F004	2.0 x 2.0	1.10	B	H80	P1	1	PS	PT	-	Paint 1-Door Network Spec.
F005	Plaster/Late/Late/Late	F005	2.0 x 2.0	1.10	B	H80	P1	1	PS	PT	-	Paint 1-Door Network Spec.
F006	Plaster/Late/Late/Late	F006	2.0 x 2.0	1.10	B	H80	P1	1	PS	PT	-	Paint 1-Door Network Spec.
F007	Plaster/Late/Late/Late	F007	2.0 x 2.0	1.10	B	H80	P1	1	PS	PT	-	Paint 1-Door Network Spec.
F008	Plaster/Late/Late/Late	F008	2.0 x 2.0	1.10	B	H80	P1	1	PS	PT	-	Paint 1-Door Network Spec.
F009	Plaster/Late/Late/Late	F009	2.0 x 2.0	1.10	B	H80	P1	1	PS	PT	-	Paint 1-Door Network Spec.
F010	Plaster/Late/Late/Late	F010	2.0 x 2.0	1.10	B	H80	P1	1	PS	PT	-	Paint 1-Door Network Spec.
F011	Plaster/Late/Late/Late	F011	2.0 x 2.0	1.10	B	H80	P1	1	PS	PT	-	Paint 1-Door Network Spec.
F012	Plaster/Late/Late/Late	F012	2.0 x 2.0	1.10	B	H80	P1	1	PS	PT	-	Paint 1-Door Network Spec.
F013	Plaster/Late/Late/Late	F013	2.0 x 2.0	1.10	B	H80	P1	1	PS	PT	-	Paint 1-Door Network Spec.
F014	Plaster/Late/Late/Late	F014	2.0 x 2.0	1.10	B	H80	P1	1	PS	PT	-	Paint 1-Door Network Spec.
F015	Plaster/Late/Late/Late	F015	2.0 x 2.0	1.10	B	H80	P1	1	PS	PT	-	Paint 1-Door Network Spec.
F016	Plaster/Late/Late/Late	F016	2.0 x 2.0	1.10	B	H80	P1	1	PS	PT	-	Paint 1-Door Network Spec.
F017	Plaster/Late/Late/Late	F017	2.0 x 2.0	1.10	B	H80	P1	1	PS	PT	-	Paint 1-Door Network Spec.
F018	Plaster/Late/Late/Late	F018	2.0 x 2.0	1.10	B	H80	P1	1	PS	PT	-	Paint 1-Door Network Spec.
F019	Plaster/Late/Late/Late	F019	2.0 x 2.0	1.10	B	H80	P1	1	PS	PT	-	Paint 1-Door Network Spec.
F020	Plaster/Late/Late/Late	F020	2.0 x 2.0	1.10	B	H80	P1	1	PS	PT	-	Paint 1-Door Network Spec.
F021	Plaster/Late/Late/Late	F021	2.0 x 2.0	1.10	B	H80	P1	1	PS	PT	-	Paint 1-Door Network Spec.
F022	Plaster/Late/Late/Late	F022	2.0 x 2.0	1.10	B	H80	P1	1	PS	PT	-	Paint 1-Door Network Spec.
F023	Plaster/Late/Late/Late	F023	2.0 x 2.0	1.10	B	H80	P1	1	PS	PT	-	Paint 1-Door Network Spec.
F024	Plaster/Late/Late/Late	F024	2.0 x 2.0	1.10	B	H80	P1	1	PS	PT	-	Paint 1-Door Network Spec.
F025	Plaster/Late/Late/Late	F025	2.0 x 2.0	1.10	B	H80	P1	1	PS	PT	-	Paint 1-Door Network Spec.
F026	Plaster/Late/Late/Late	F026	2.0 x 2.0	1.10	B	H80	P1	1	PS	PT	-	Paint 1-Door Network Spec.
F027	Plaster/Late/Late/Late	F027	2.0 x 2.0	1.10	B	H80	P1	1	PS	PT	-	Paint 1-Door Network Spec.
F028	Plaster/Late/Late/Late	F028	2.0 x 2.0	1.10	B	H80	P1	1	PS	PT	-	Paint 1-Door Network Spec.
F029	Plaster/Late/Late/Late	F029	2.0 x 2.0	1.10	B	H80	P1	1	PS	PT	-	Paint 1-Door Network Spec.
F030	Plaster/Late/Late/Late	F030	2.0 x 2.0	1.10	B	H80	P1	1	PS	PT	-	Paint 1-Door Network Spec.
F031	Plaster/Late/Late/Late	F031	2.0 x 2.0	1.10	B	H80	P1	1	PS	PT	-	Paint 1-Door Network Spec.
F032	Plaster/Late/Late/Late	F032	2.0 x 2.0	1.10	B	H80	P1	1	PS	PT	-	Paint 1-Door Network Spec.
F033	Plaster/Late/Late/Late	F033	2.0 x 2.0	1.10	B	H80	P1	1	PS	PT	-	Paint 1-Door Network Spec.
F034	Plaster/Late/Late/Late	F034	2.0 x 2.0	1.10	B	H80	P1	1	PS	PT	-	Paint 1-Door Network Spec.
F035	Plaster/Late/Late/Late	F035	2.0 x 2.0	1.10	B	H80	P1	1	PS	PT	-	Paint 1-Door Network Spec.
F036	Plaster/Late/Late/Late	F036	2.0 x 2.0	1.10	B	H80	P1	1	PS	PT	-	Paint 1-Door Network Spec.
F037	Plaster/Late/Late/Late	F037	2.0 x 2.0	1.10	B	H80	P1	1	PS	PT	-	Paint 1-Door Network Spec.
F038	Plaster/Late/Late/Late	F038	2.0 x 2.0	1.10	B	H80	P1	1	PS	PT	-	Paint 1-Door Network Spec.
F039	Plaster/Late/Late/Late	F039	2.0 x 2.0	1.10	B	H80	P1	1	PS	PT	-	Paint 1-Door Network Spec.
F040	Plaster/Late/Late/Late	F040	2.0 x 2.0	1.10	B	H80	P1	1	PS	PT	-	Paint 1-Door Network Spec.
F041	Plaster/Late/Late/Late	F041	2.0 x 2.0	1.10	B	H80	P1	1	PS	PT	-	Paint 1-Door Network Spec.
F042	Plaster/Late/Late/Late	F042	2.0 x 2.0	1.10	B	H80	P1	1	PS	PT	-	Paint 1-Door Network Spec.
F043	Plaster/Late/Late/Late	F043	2.0 x 2.0	1.10	B	H80	P1	1	PS	PT	-	Paint 1-Door Network Spec.
F044	Plaster/Late/Late/Late	F044	2.0 x 2.0	1.10	B	H80	P1	1	PS	PT	-	Paint 1-Door Network Spec.
F045	Plaster/Late/Late/Late	F045	2.0 x 2.0	1.10	B	H80	P1	1	PS	PT	-	Paint 1-Door Network Spec.
F046	Plaster/Late/Late/Late	F046	2.0 x 2.0	1.10	B	H80	P1	1	PS	PT	-	Paint 1-Door Network Spec.
F047	Plaster/Late/Late/Late	F047	2.0 x 2.0	1.10	B	H80	P1	1	PS	PT	-	Paint 1-Door Network Spec.
F048	Plaster/Late/Late/Late	F048	2.0 x 2.0	1.10	B	H80	P1	1	PS	PT	-	Paint 1-Door Network Spec.
F049	Plaster/Late/Late/Late	F049	2.0 x 2.0	1.10	B	H80	P1	1	PS	PT	-	Paint 1-Door Network Spec.
F050	Plaster/Late/Late/Late	F050	2.0 x 2.0	1.10	B	H80	P1	1	PS	PT	-	Paint 1-Door Network Spec.
F051	Plaster/Late/Late/Late	F051	2.0 x 2.0	1.10	B	H80	P1	1	PS	PT	-	Paint 1-Door Network Spec.
F052	Plaster/Late/Late/Late	F052	2.0 x 2.0	1.10	B	H80	P1	1	PS	PT	-	Paint 1-Door Network Spec.
F053	Plaster/Late/Late/Late	F053	2.0 x 2.0	1.10	B	H80	P1	1	PS	PT	-	Paint 1-Door Network Spec.
F054	Plaster/Late/Late/Late	F054	2.0 x 2.0	1.10	B	H80	P1	1	PS	PT	-	Paint 1-Door Network Spec.
F055	Plaster/Late/Late/Late	F055	2.0 x 2.0	1.10	B	H80	P1	1	PS	PT	-	Paint 1-Door Network Spec.
F056	Plaster/Late/Late/Late	F056	2.0 x 2.0	1.10	B	H80	P1	1	PS	PT	-	Paint 1-Door Network Spec.
F057	Plaster/Late/Late/Late	F057	2.0 x 2.0	1.10	B	H80	P1	1	PS	PT	-	Paint 1-Door Network Spec.
F058	Plaster/Late/Late/Late	F058	2.0 x 2.0	1.10	B	H80	P1	1	PS	PT	-	Paint 1-Door Network Spec.
F059	Plaster/Late/Late/Late	F059	2.0 x 2.0	1.10	B	H80	P1	1	PS	PT	-	Paint 1-Door Network Spec.
F060	Plaster/Late/Late/Late	F060	2.0 x 2.0	1.10	B	H80	P1	1	PS	PT	-	Paint 1-Door Network Spec.
F061	Plaster/Late/Late/Late	F061	2.0 x 2.0	1.10	B	H80	P1	1	PS	PT	-	Paint 1-Door Network Spec.
F062	Plaster/Late/Late/Late	F062	2.0 x 2.0	1.10	B	H80	P1	1	PS	PT	-	Paint 1-Door Network Spec.
F063	Plaster/Late/Late/Late	F063	2.0 x 2.0	1.10	B	H80	P1	1	PS	PT	-	Paint 1-Door Network Spec.
F064	Plaster/Late/Late/Late	F064	2.0 x 2.0	1.10	B	H80	P1	1	PS	PT	-	Paint 1-Door Network Spec.
F065	Plaster/Late/Late/Late	F065	2.0 x 2.0	1.10	B	H80	P1	1	PS	PT	-	Paint 1-Door Network Spec.
F066	Plaster/Late/Late/Late	F066	2.0 x 2.0	1.10	B	H80	P1	1	PS	PT	-	Paint 1-Door Network Spec.
F067	Plaster/Late/Late/Late	F067	2.0 x 2.0	1.10	B	H80	P1	1	PS	PT	-	Paint 1-Door Network Spec.
F068	Plaster/Late/Late/Late	F068	2.0 x 2.0	1.10	B	H80	P1	1	PS	PT	-	Paint 1-Door Network Spec.
F069	Plaster/Late/Late/Late	F069	2.0 x 2.0	1.10	B	H80	P1	1	PS	PT	-	Paint 1-Door Network Spec.
F070	Plaster/Late/Late/Late	F070	2.0 x 2.0	1.10	B	H80	P1	1	PS	PT	-	Paint 1-Door Network Spec.
F071	Plaster/Late/Late/Late	F071	2.0 x 2.0	1.10	B	H80	P1	1	PS	PT	-	Paint 1-Door Network Spec.
F072	Plaster/Late/Late/Late	F072	2.0 x 2.0	1.10	B	H80	P1	1	PS	PT	-	Paint 1-Door Network Spec.
F073	Plaster/Late/Late/Late	F073	2.0 x 2.0	1.10	B	H80	P1	1	PS	PT	-	Paint 1-Door Network Spec.
F074	Plaster/Late/Late/Late	F074	2.0 x 2.0	1.10	B	H80	P1	1	PS	PT	-	Paint 1-Door Network Spec.
F075	Plaster/Late/Late/Late	F075	2.0 x 2.0	1.10	B	H80	P1	1	PS	PT	-	Paint 1-Door Network Spec.
F076	Plaster/Late/Late/Late	F076	2.0 x 2.0	1.10	B	H80	P1	1	PS	PT	-	Paint 1-Door Network Spec.
F077	Plaster/Late/Late/Late	F077	2.0 x 2.0	1.10	B	H80	P1	1	PS	PT	-	Paint 1-Door Network Spec.
F078	Plaster/Late/Late/Late	F078	2.0 x 2.0	1.10	B	H80	P1	1	PS	PT	-	Paint 1-Door Network Spec.
F079	Plaster/Late/Late/Late	F079	2.0 x 2.0	1.10	B	H80	P1	1	PS	PT	-	Paint 1-Door Network Spec.
F080	Plaster/Late/Late/Late	F080	2.0 x 2.0	1.10	B	H80	P1	1	PS	PT	-	Paint 1-Door Network Spec.
F081	Plaster/Late/Late/Late	F081	2.0 x 2.0	1.10	B	H80	P1	1	PS	PT	-	Paint 1-Door Network Spec.
F082	Plaster/Late/Late/Late	F082	2.0 x 2.0	1.10	B	H80	P1	1	PS	PT	-	Paint 1-Door Network Spec.
F083	Plaster/Late/Late/Late	F083	2.0 x 2.0	1.10	B	H80	P1	1	PS	PT	-	Paint 1-Door Network Spec.
F084	Plaster/Late/Late/Late	F084	2.0 x 2.0	1.10	B	H80	P1	1	PS	PT	-	Paint 1-Door Network Spec.
F085	Plaster/Late/Late/Late	F085	2.0 x 2.0	1.10	B	H80	P1	1	PS	PT	-	Paint 1-Door Network Spec.
F086	Plaster/Late/Late/Late	F086	2.0 x 2.0	1.10	B	H80	P1	1	PS	PT	-	Paint 1-Door Network Spec.
F087	Plaster/Late/Late/Late	F087	2.0 x 2.0	1.10	B	H80	P1	1	PS	PT	-	Paint 1-Door Network Spec.
F088	Plaster/Late/Late/Late	F088	2.0 x 2.0	1.10	B	H80	P1	1	PS	PT	-	Paint 1-Door Network Spec.
F089	Plaster/Late/Late/Late	F089	2.0 x 2.0	1.10	B	H80	P1	1	PS	PT	-	Paint 1-Door Network Spec.
F090	Plaster/Late/Late/Late	F090	2.0 x 2.0	1.10	B	H80	P1	1	PS	PT	-	Paint 1-Door Network Spec.
F091	Plaster/Late/Late/Late	F091	2.0 x 2.0	1.10	B	H80	P1	1	PS	PT	-	Paint 1-Door Network Spec.
F092	Plaster/Late/Late/Late	F092	2.0 x 2.0	1.10	B	H80	P1	1	PS	PT	-	Paint 1-Door Network Spec.
F093	Plaster/Late/Late/Late	F093	2.0 x 2.0	1.10	B	H80	P1	1	PS	PT	-	Paint 1-Door Network Spec.
F094	Plaster/Late/Late/Late	F094	2.0 x 2.0	1.10	B	H80	P1	1	PS	PT	-	Paint 1-Door Network Spec.
F095	Plaster/Late/Late/Late	F095	2.0 x 2.0	1.10	B	H80	P1	1	PS	PT	-	Paint 1-Door Network Spec.
F096	Plaster/Late/Late/Late	F096	2.0 x 2.0	1.10	B	H80	P1	1	PS	PT	-	Paint 1-Door Network Spec.
F097	Plaster/Late/Late/Late	F097	2.0 x 2.0	1.10	B	H80	P1	1	PS	PT	-	Paint 1-Door Network Spec.
F098	Plaster/Late/Late/Late	F098	2.0 x 2.0	1.10	B	H80	P1	1	PS	PT	-	Paint 1-Door Network Spec.
F099	Plaster/Late/Late/Late	F099	2.0 x 2.0	1.10	B	H80	P1	1	PS	PT	-	Paint 1-Door Network Spec.
F100	Plaster/Late/Late/Late	F100	2.0 x 2.0	1.10	B	H80	P1	1	PS	PT	-	Paint 1-Door Network Spec.
F101	Plaster/Late/Late/Late	F101	2.0 x 2.0	1.10	B	H80	P1	1	PS	PT	-	Paint 1-Door Network Spec.
F102	Plaster/Late/Late/Late	F102	2.0 x 2.0	1.10	B	H80	P1	1	PS	PT	-	Paint 1-Door Network Spec.
F103	Plaster/Late/Late/Late	F103	2.0 x 2.0	1.10	B	H80	P1	1	PS	PT	-	Paint 1-Door Network Spec.
F104	Plaster/Late/Late/Late	F104	2.0 x 2.0	1.10	B	H80	P1	1	PS	PT	-	Paint 1-Door Network Spec.
F105	Plaster/Late/Late/Late	F105	2.0 x 2.0	1.10	B	H80	P1	1	PS	PT	-	Paint 1-Door Network Spec.
F106	Plaster/Late/Late/Late	F106	2.0 x 2.0	1.10	B	H80	P1	1	PS	PT	-	Paint 1-Door Network Spec.
F107	Plaster/Late/Late/Late	F107	2.0 x 2.0	1.10	B	H80	P1	1	PS	PT	-	Paint 1-Door Network Spec.
F108	Plaster/Late/Late/Late	F108	2.0 x 2.0	1.10	B	H80	P1	1	PS	PT	-	Paint 1-Door Network Spec.
F109	Plaster/Late/Late/Late	F109	2.0 x 2.0	1.10	B	H80	P1	1	PS	PT	-	Paint 1-Door Network Spec.
F110	Plaster/Late/Late/Late	F110	2.0 x 2.0	1.10	B	H80	P1	1	PS	PT	-	Paint 1-Door Network Spec.
F111	Plaster/Late/Late/Late	F111	2.0 x 2.0	1.10	B	H80	P1	1	PS	PT	-	Paint 1-Door Network Spec.
F112	Plaster/Late/Late/Late	F112	2.0 x 2.0	1.10	B	H80	P1	1	PS	PT	-	Paint 1-Door Network Spec.
F113	Plaster/Late/Late/Late	F113	2.0 x 2.0	1.10	B	H80	P1	1	PS	PT	-	Paint 1-Door Network Spec.
F114	Plaster/Late/Late/Late	F114										



- ## GENERAL NOTES
1. ALL FIRE-RATED DOORS TO HAVE APPROPRIATE FIRE-RATED FRAMES.
  2. ALL GLAZING IN DOORS & SLEIGHTS TO BE TEMPERED, CR CRACKED SAFETY GLASS.
  3. SEE HARDWARE SPEC'S AND SCHEDULE FOR ALL DOOR AND FRAME HARDWARE REQUIREMENTS.
  4. ALL WOOD DOOR STOPS SHALL BE FIXED TO BLOCK BACKING SECURED BETWEEN STUDS.
  5. VIEWERS TO BE MOUNTED 4'-9" ABOVE FLOOR LEVEL AND ALL RESIDENTIAL ENTRY DOORS.
  6. ASTIGAL ON ALL PAIRS OF HOLLOW METAL DOORS.
  7. SILE ENTRY DOORS SHALL BE UNDERCUT BY 1/2" ABOVE CARPETS.
  8. SILE ENTRY DOORS SHALL BE UNDERCUT 1/2" ABOVE CARPETS.
  9. ALL SUSPENSIOUS METALS TO BE PAINTED UNLESS NOTED OTHERWISE.
  10. SITE MEASURE ALL OPENINGS.

**M C M**

**Musson  
Cattell  
Mackey  
Partnership**

**Architects Designers Planners**

Oceanic Plaza  
1066 West Hastings Street  
Suite 1900  
Vancouver, British Columbia  
Canada V6E 3X1  
T. 604. 687. 2990  
F. 604. 687. 1771  
MCMPartners.com



**Original  
Submission**  
Received Date  
July 21, 2021

16 JUNE 2021  
Issued for Record Drawings

Revisions YYYY-MM-DD

Seal

---

**848 Yates St**  
**Victoria, BC**

# Door Types and Door Schedule

Drawing	
Scale	N.T.S.
Project	216017
Sheet	A003

CROSS OVER FLOORS : L1 - L6 - L11 - L16 - L20



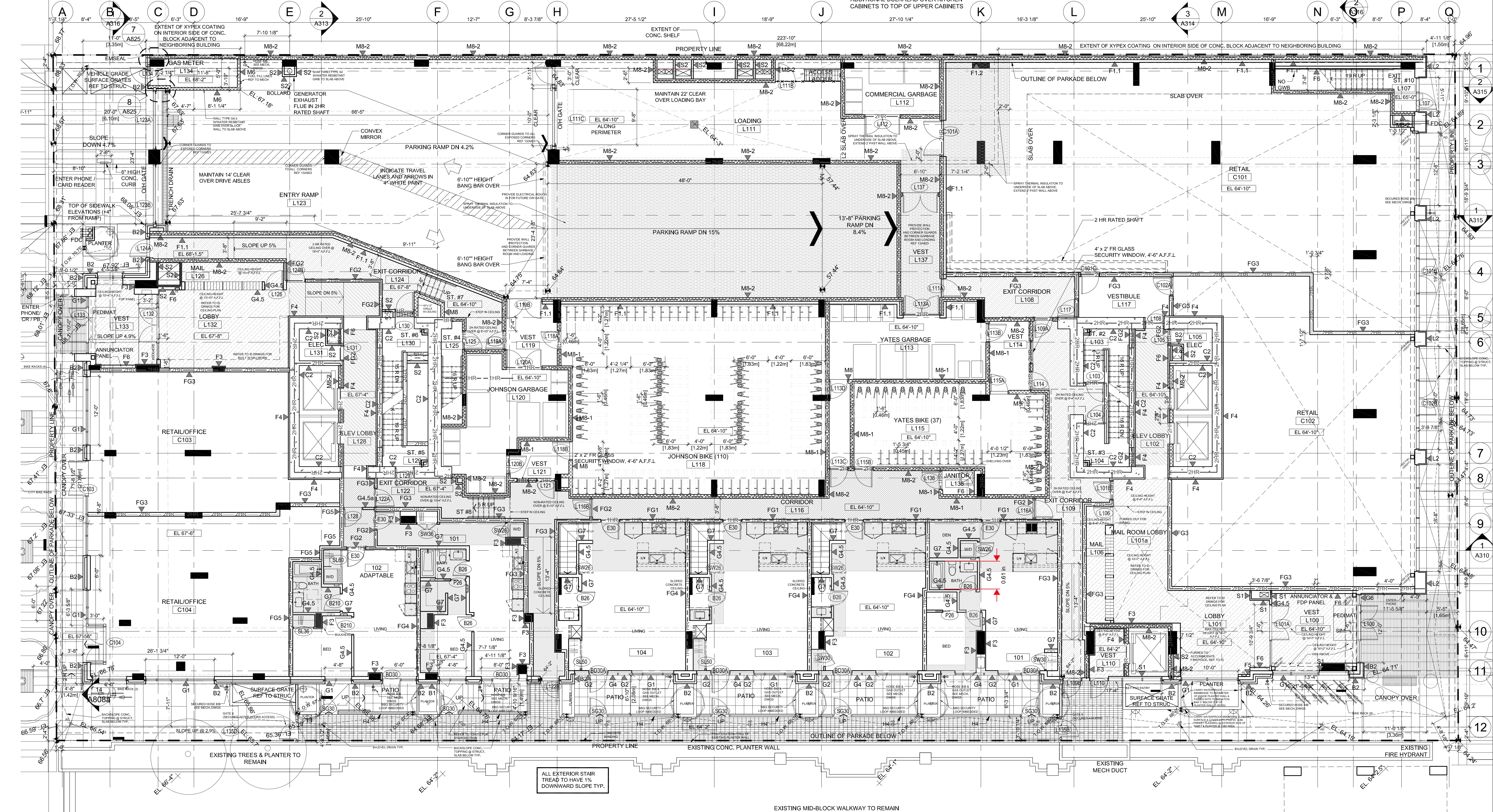
GRADE:  
NORTH [(20.19m + 20.89m)/2] X 36.54m = 750.53  
EAST [(20.89m + 19.78m)/2] X 74.46m = 1,514.14  
SOUTH [(19.78m + 19.59m)/2] X 36.54m = 719.29  
WEST [(19.59m + 20.19m)/2] X 74.46m = 1,461.01

GRADE CALCULATION:  
4,464.97 / 222m = 20.11m

NOTE: CONTRACTOR TO CHECK ALL CEILING DROPS WITH  
DUCTING, LIGHTING AND SPRINKLERS BEFORE FRAMING.  
CONTRACTOR TO COORDINATE LOCATION OF CEILING  
ACCESS PANELS - FINISHED TO MATCH CEILINGS

CEILING HEIGHT A.F.F.L.  
ELEV LOBBY YATES TOWER: 8'-6"  
JOHNSON TOWER: 10'-4"  
CORRIDOR YATES TOWER: 8'-10"  
JOHNSON TOWER: 10'-4"  
SUITES YATES TOWER: 8'-10" \*  
JOHNSON TOWER: 10'-4" \*  
OTHER YATES TOWER: AS INDICATED  
JOHNSON TOWER: AS INDICATED  
2 HR RATED CEILING YATES TOWER: AS INDICATED  
JOHNSON TOWER: AS INDICATED  
\* ADDITIONAL BULKHEAD OVER KITCHEN  
CABINETS TO TOP OF UPPER CABINETS

GENERAL NOTE:  
1. REFER TO INTERIOR DESIGN DRAWINGS FOR FINISHES & REFLECTED CEILING PLAN AT  
ELEVATOR LOBBY & PUBLIC CORRIDORS  
2. REFER TO INTERIOR DRAWINGS FOR BATHROOM AND KITCHEN LAYOUTS, APPLIANCES  
AND FIXTURES.  
3. GLASS DOORS TO BE TEMPERED GLASS. SIDELIGHTS ADJACENT TO GLASS DOORS ON  
GROUND LEVEL TO BE TEMPERED GLASS.  
4. FLUSH METAL SPANDREL BELOW WINDOWS ON ALL BALCONIES.  
5. LEVEL SLAB AT ALL DOORWAYS.  
6. SLOPE AND SEAL AROUND PARKING LEVEL COLUMNS AND WALLS. REF DETAIL 7/820.  
7. PROVIDE PLYWOOD BACKING BEHIND ELECTRICAL AND COMM PANELS, 8" HIGH FOR WIDTH  
OF PANELS.  
8. PREPARE SITE MOCK UPS OF ALL GUARDS FOR REVIEW BY BUILDING INSPECTOR.  
9. CONTRACTOR AND SUB TRADE TO REVIEW ALIGNMENT OF ALL PLUMBING, DRAIN,  
SANITARY AND SPRINKLER LINES WITH CONSULTANT PRIOR TO INSTALLATION.  
10. CONTRACTOR AND SUB TRADE TO REVIEW ALIGNMENT OF HVAC AND EXHAUST DUCTING  
WITH CONSULTANT PRIOR TO INSTALLATION.  
11. REFER TO MECH AND ELEC DRAWINGS FOR COORDINATION OF FIXTURE LOCATIONS.

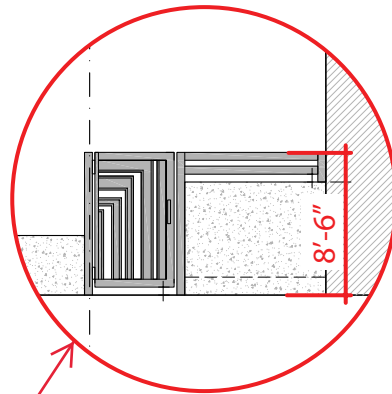
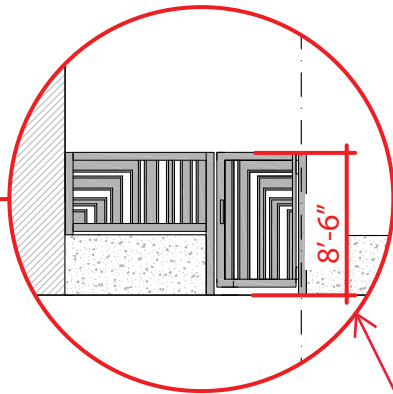




- All work constructed on 848 lands in accordance with the approved DP  
- Requested to have gates remain shut until City obtains SRW on neighboring 836 Yates property.

Johnson St

Yates St



Constructed As per  
Approved D.P Dated May 11/2017

848 Project

Resident Townhomes

GATE

GATE

4' Width

Property Line

836 Yates Property

